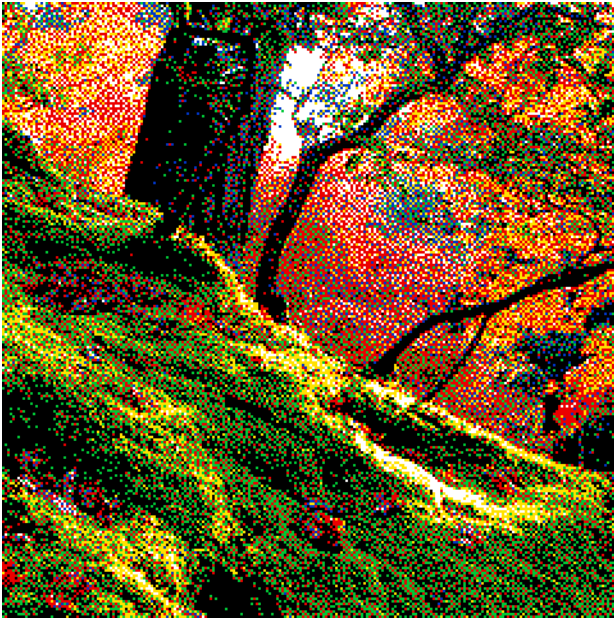




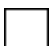





Pixel Art



1	7	13	19	25	31	37	43
2	8	14	20	26	32	38	44
3	9	15	21	27	33	39	45
4	10	16	22	28	34	40	46
5	11	17	23	29	35	41	47
6	12	18	24	30	36	42	48

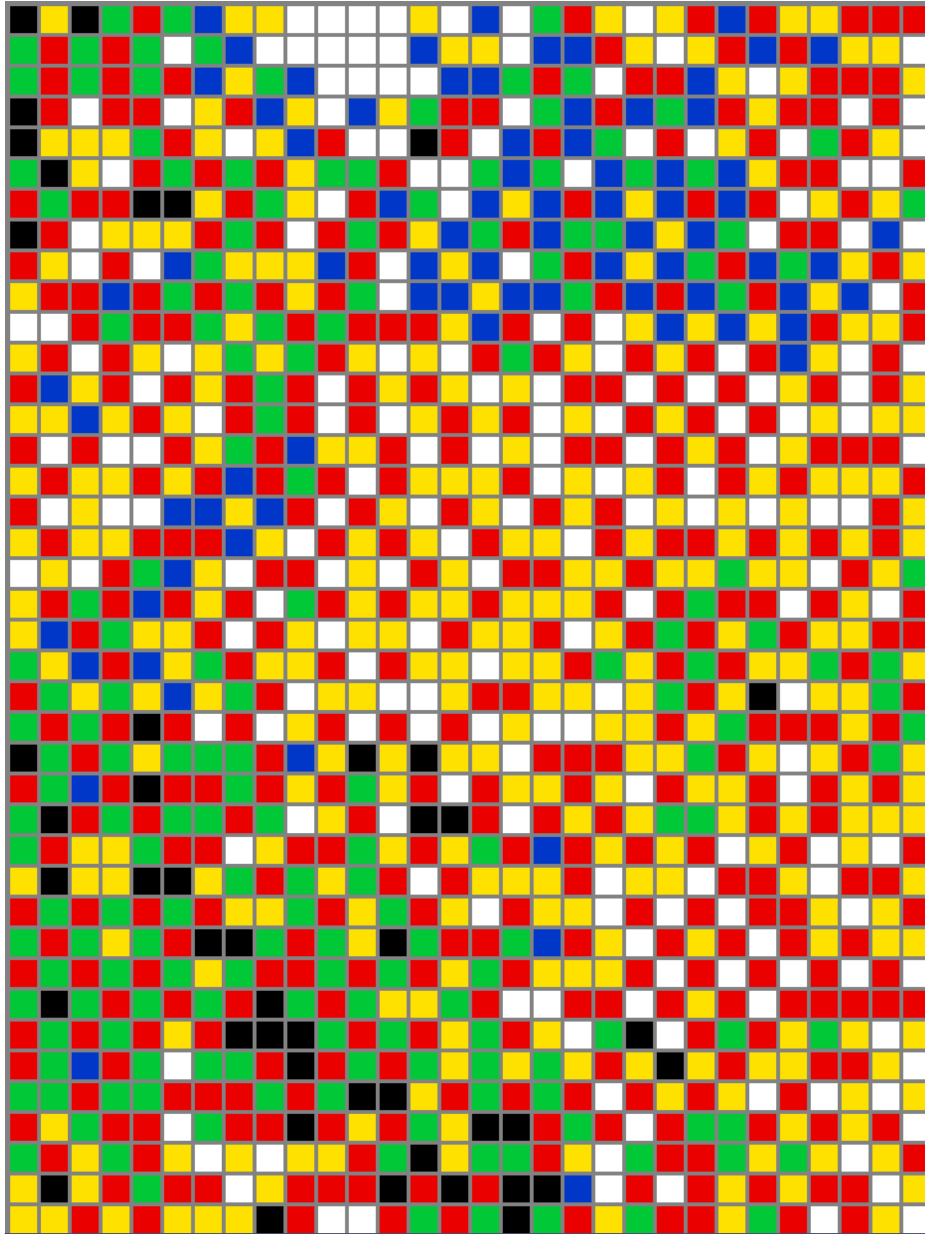
Colore	Chiodini compresi nella confezione	Chiodini necessari	Chiodini aggiuntivi che ti servono
 NERO	16200	18756	2556 (3 scatole ricambi PixelArt 1000 )
 ROSSO	15000	14022	-
 VERDE	7200	10839	3639 (4 scatole ricambi PixelArt 1000 )
 GIALLO	9000	7141	-
 BIANCO	16200	3785	-
 BLU	12000	3057	-

Stampa le schede-guida su carta comune in "dimensioni reali" cioè esattamente le stesse della tavoletta traforata; fai molta attenzione a non attivare, sulla tua stampante, il comando "Adatta al foglio" che ne varierebbe le dimensioni rendendole inutilizzabili. Ti consigliamo di stampare una pagina di prova con la scheda 1, controllarla con la tavoletta e poi stampare tutte le altre schede. Ritaglia le schede tenendo insieme il numero, ti servirà nel montaggio delle tavolette.

Questo PDF con le relative schede rappresenta soltanto un esempio di quello che si può ottenere con la tecnica Pixel Art applicata ai chiodini Quercetti. Pertanto questo PDF è scaricabile gratuitamente e non può essere oggetto di vendita.



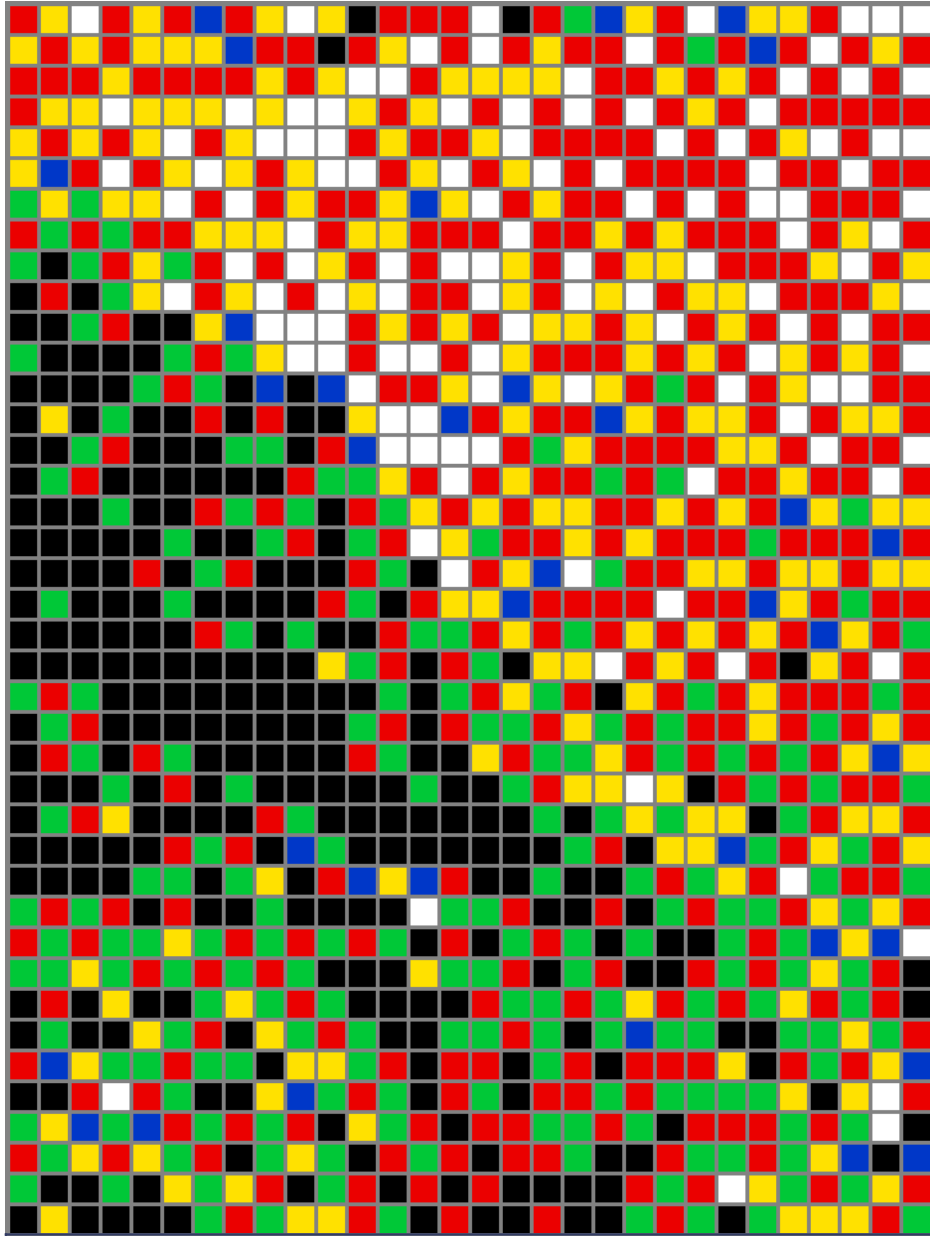
Pixel Art



1

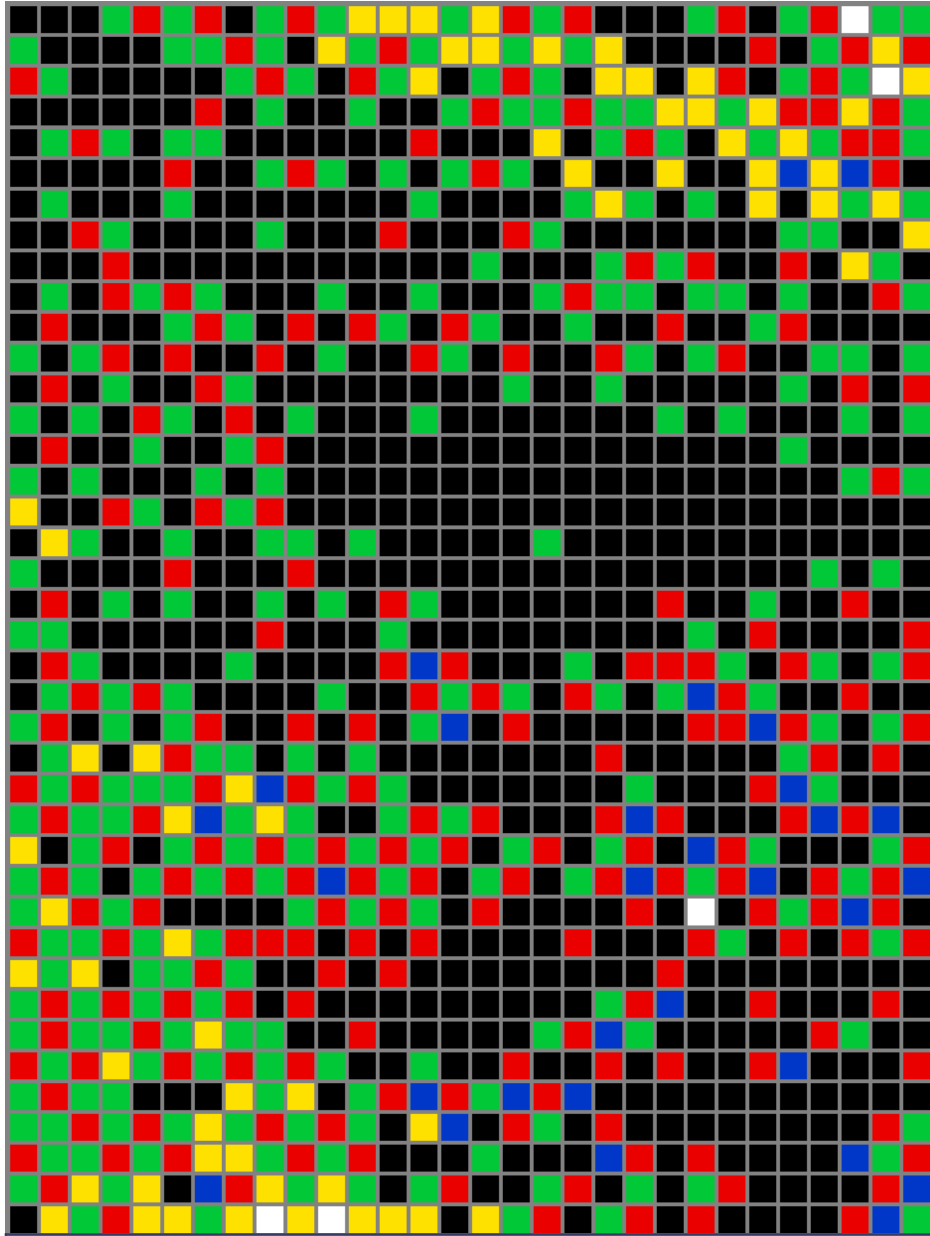


Pixel Art





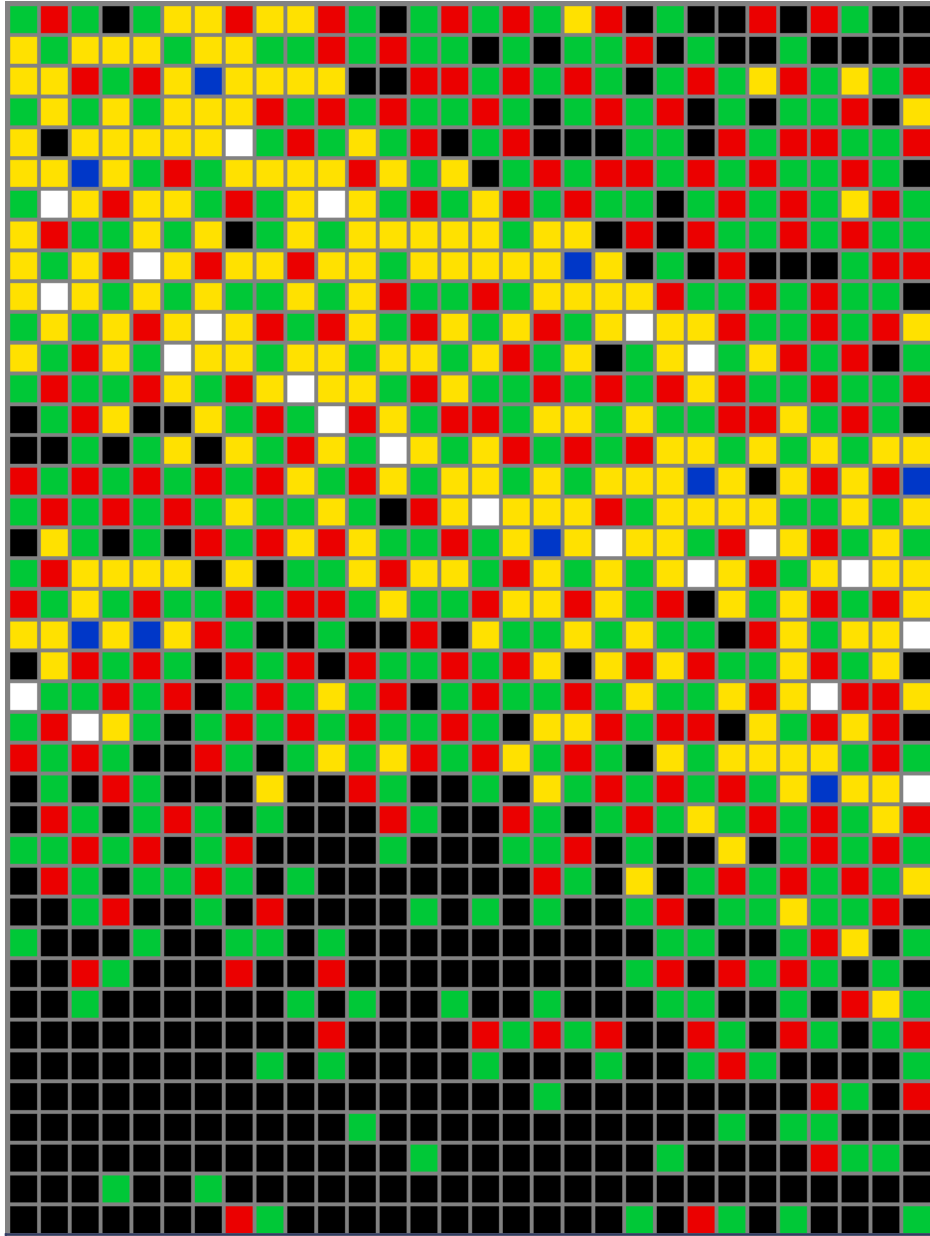
Pixel Art



3



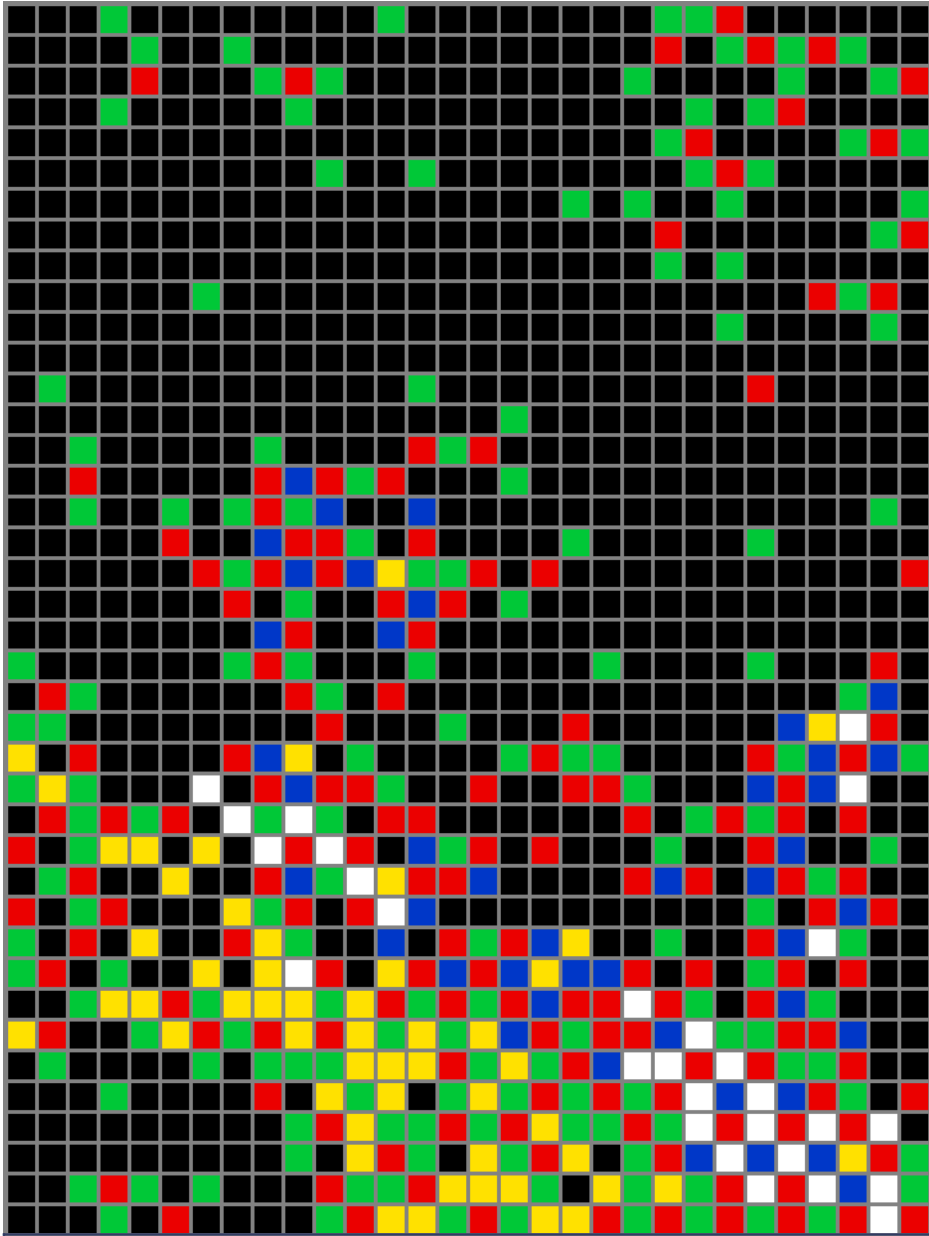
Pixel Art



4



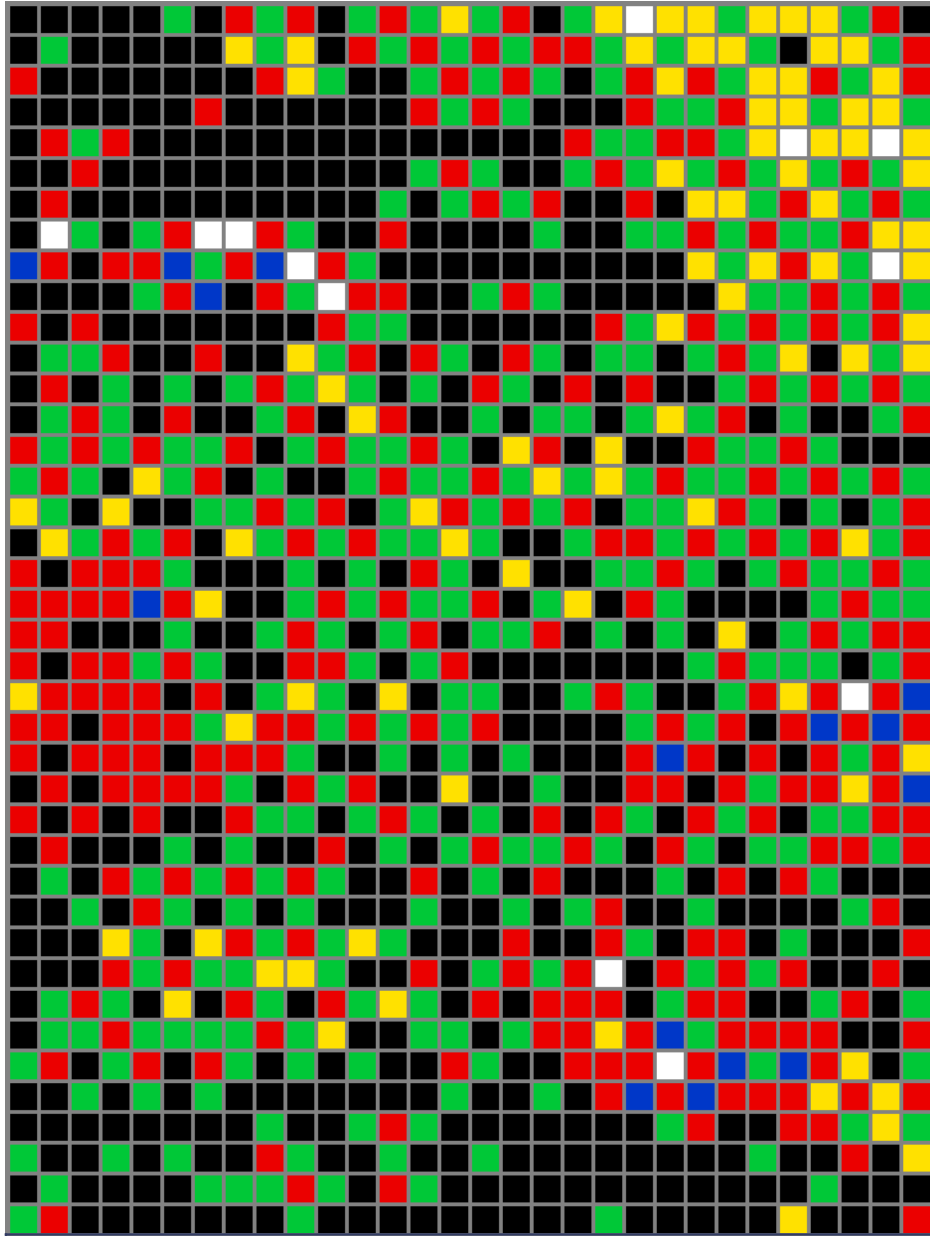
Pixel Art



5



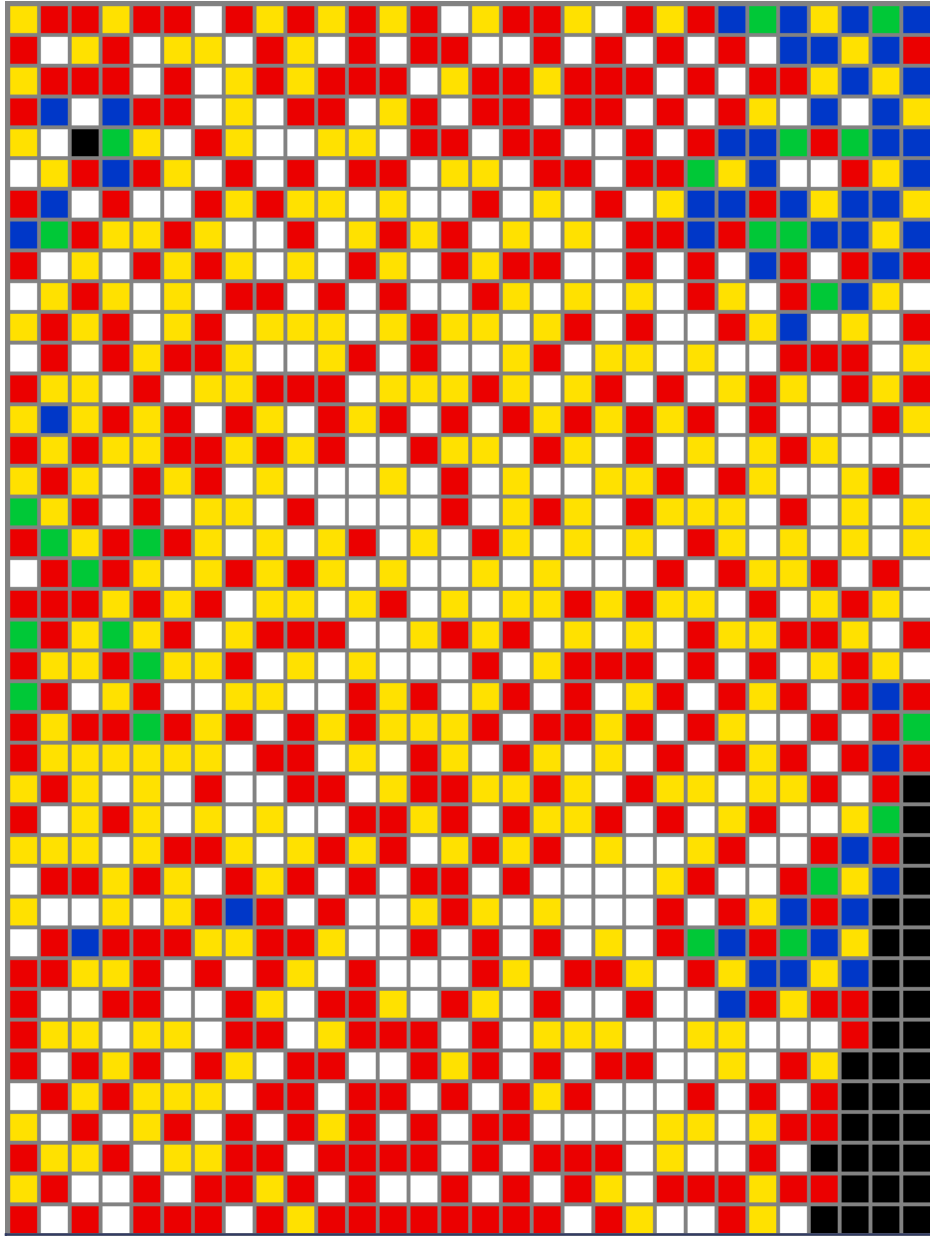
Pixel Art



6



Pixel Art

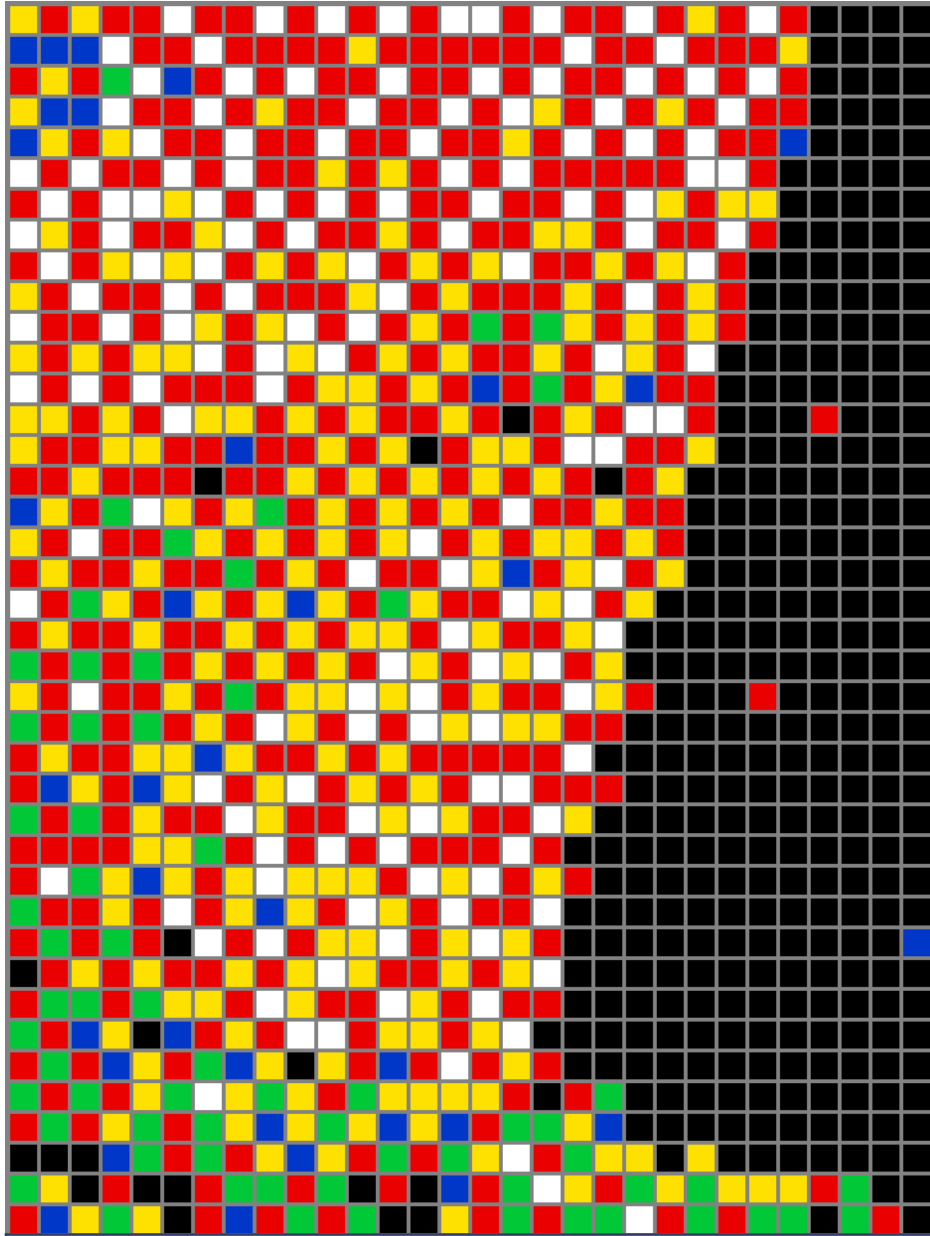


7





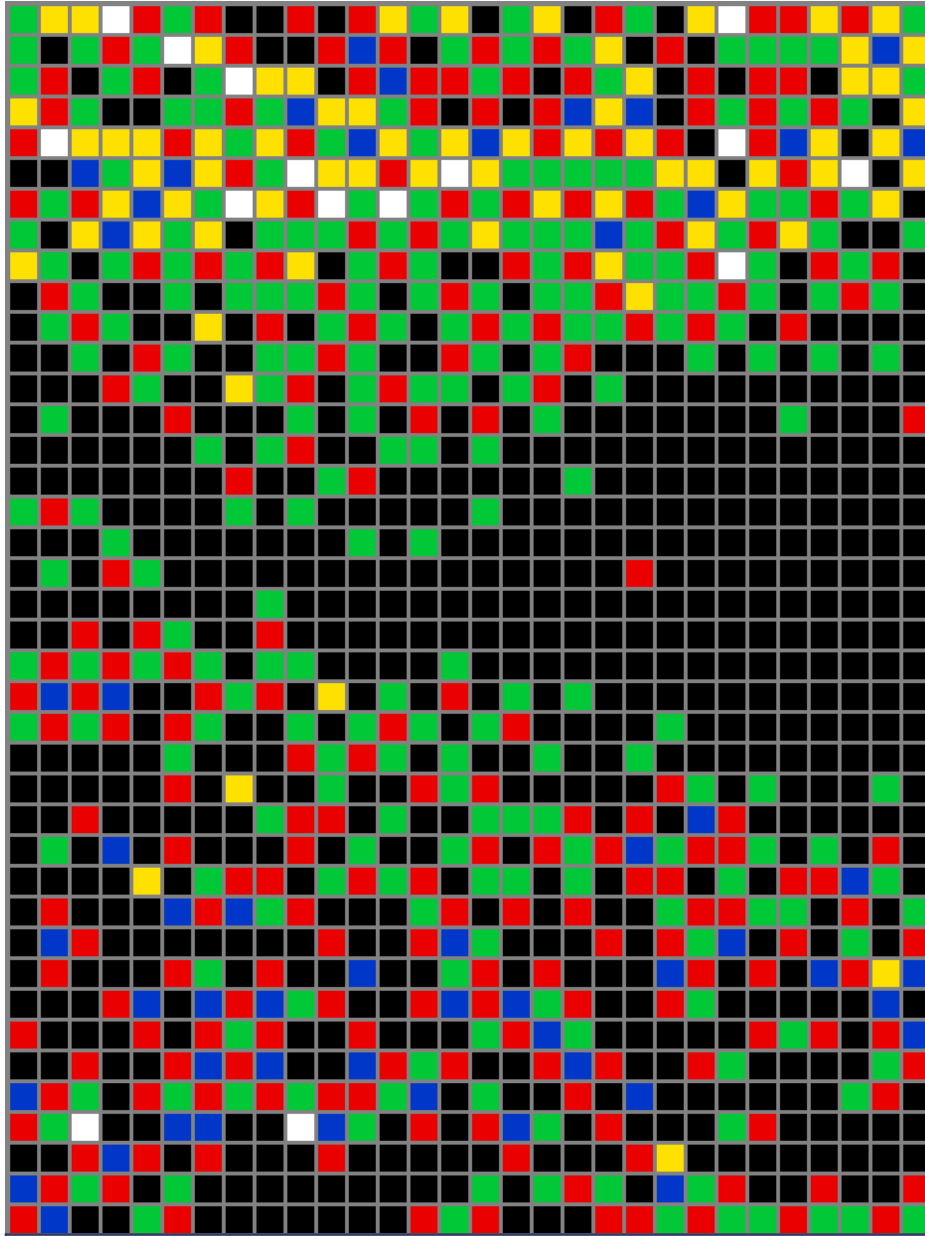
Pixel Art



8



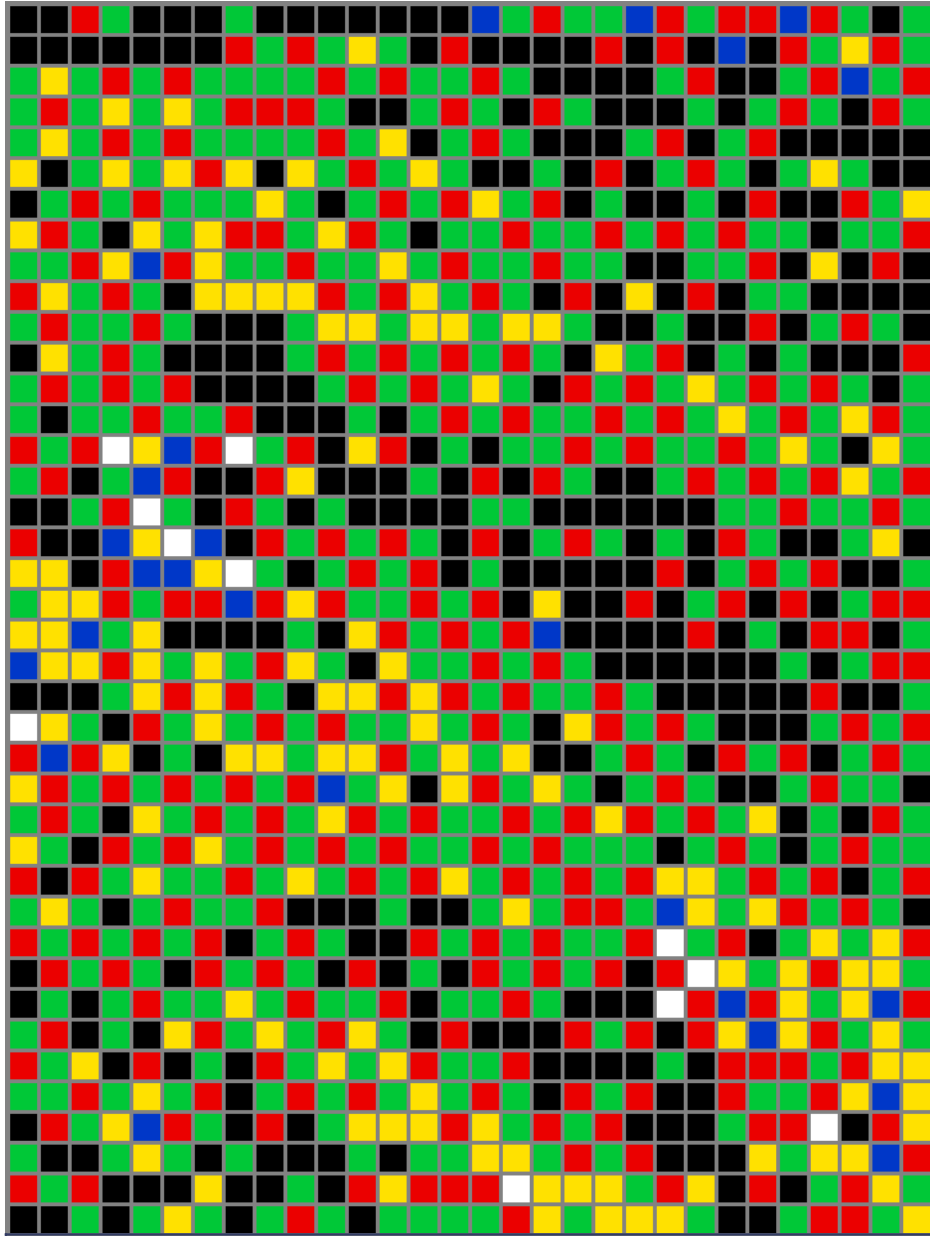
Pixel Art



9



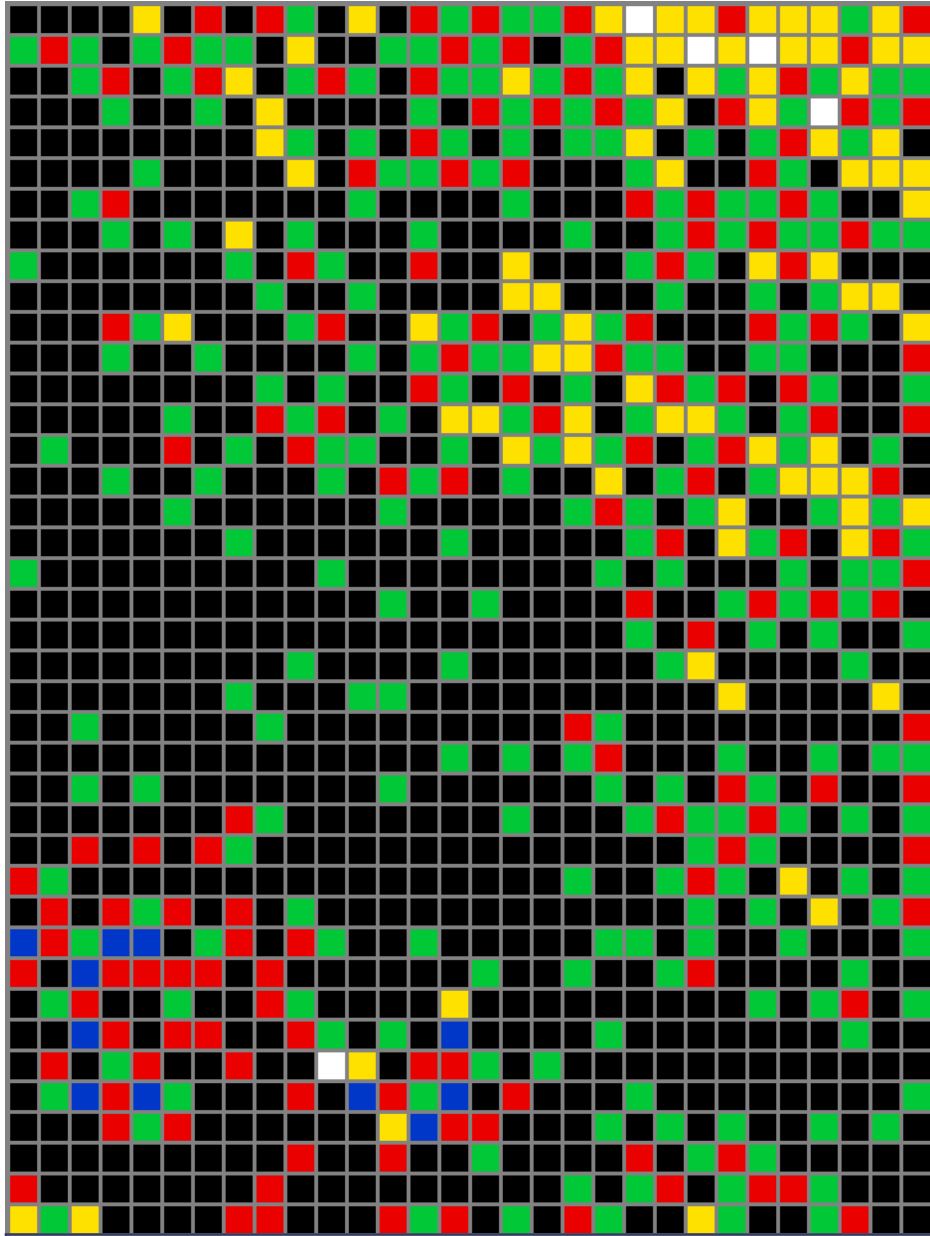
Pixel Art



10

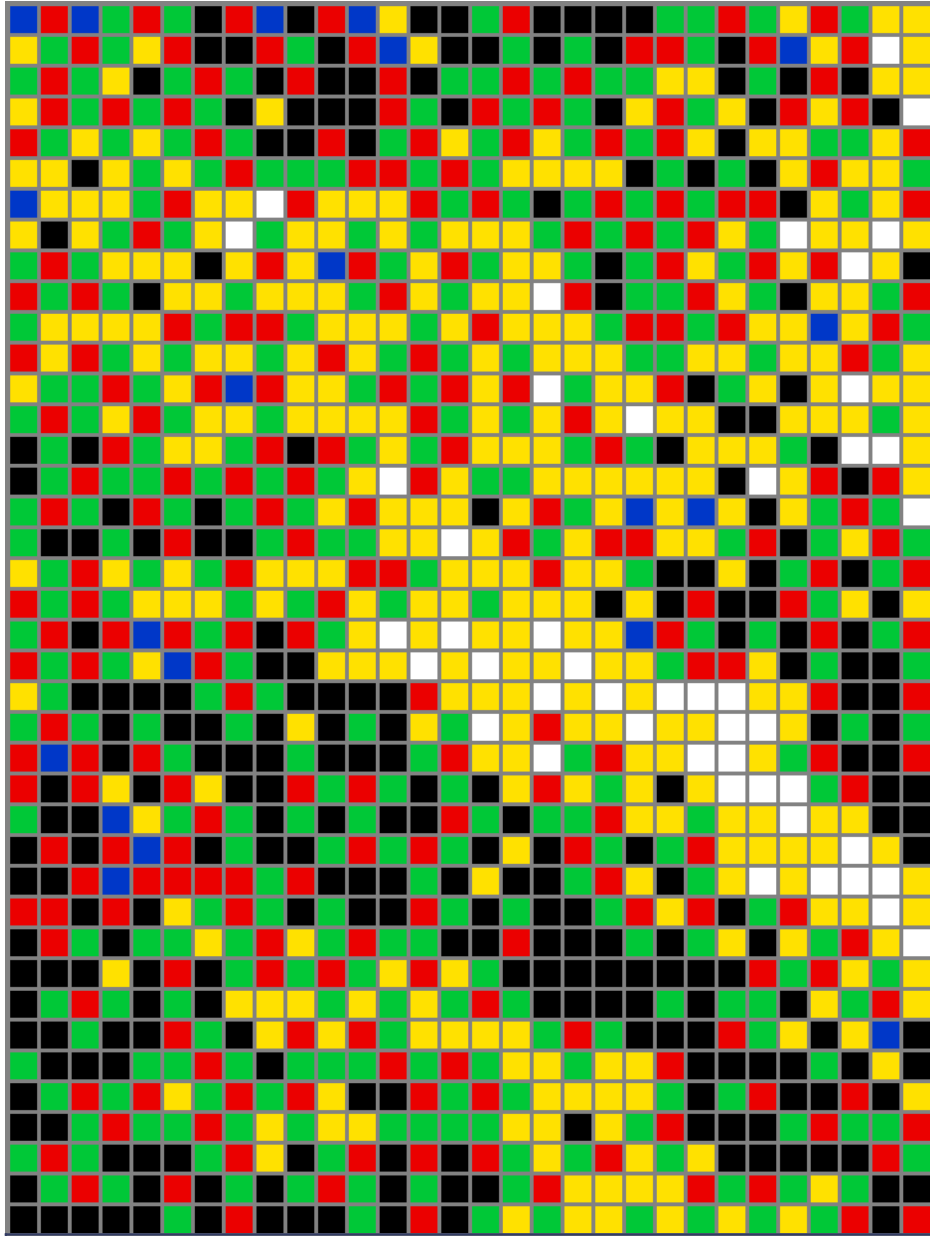


Pixel Art





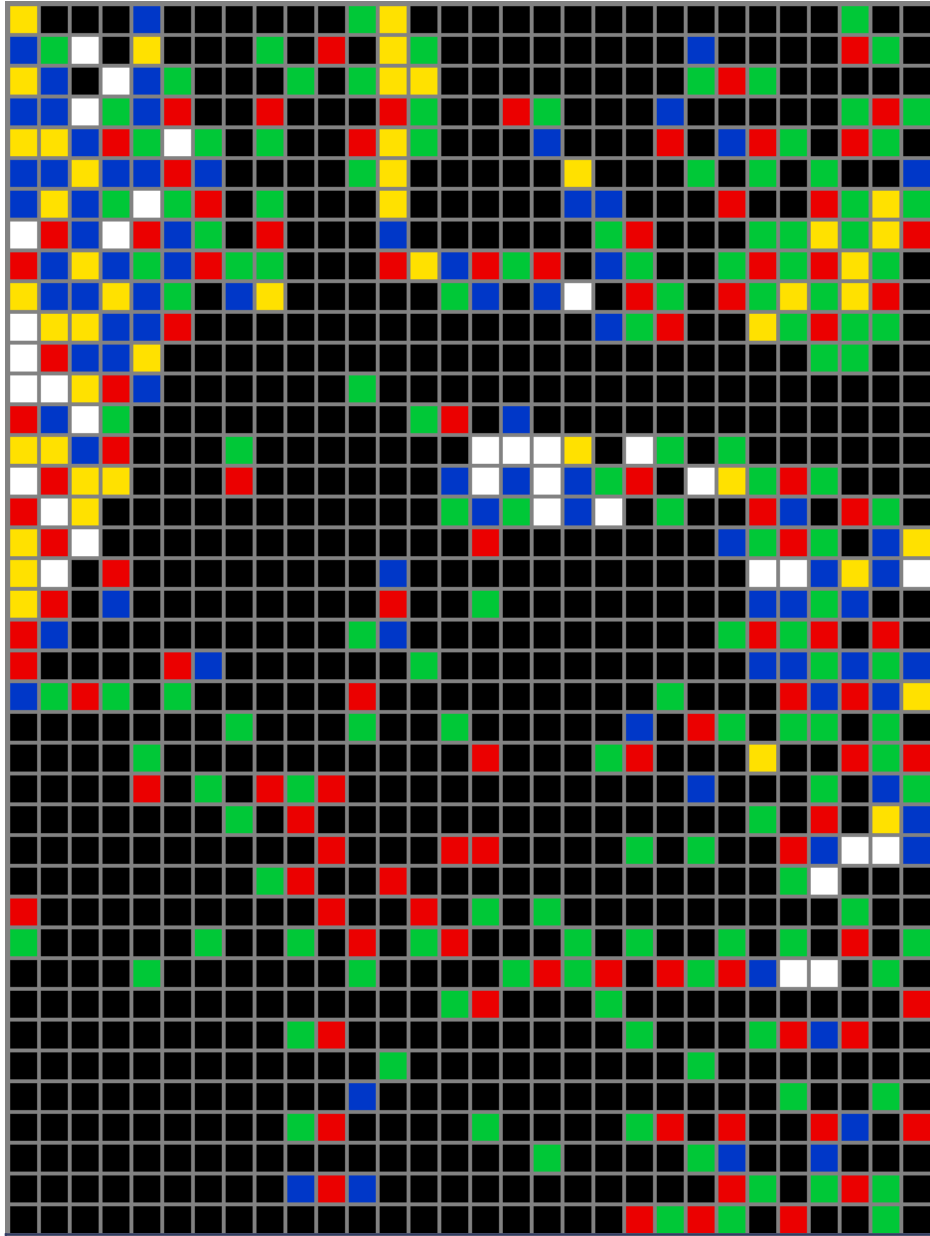
Pixel Art



12



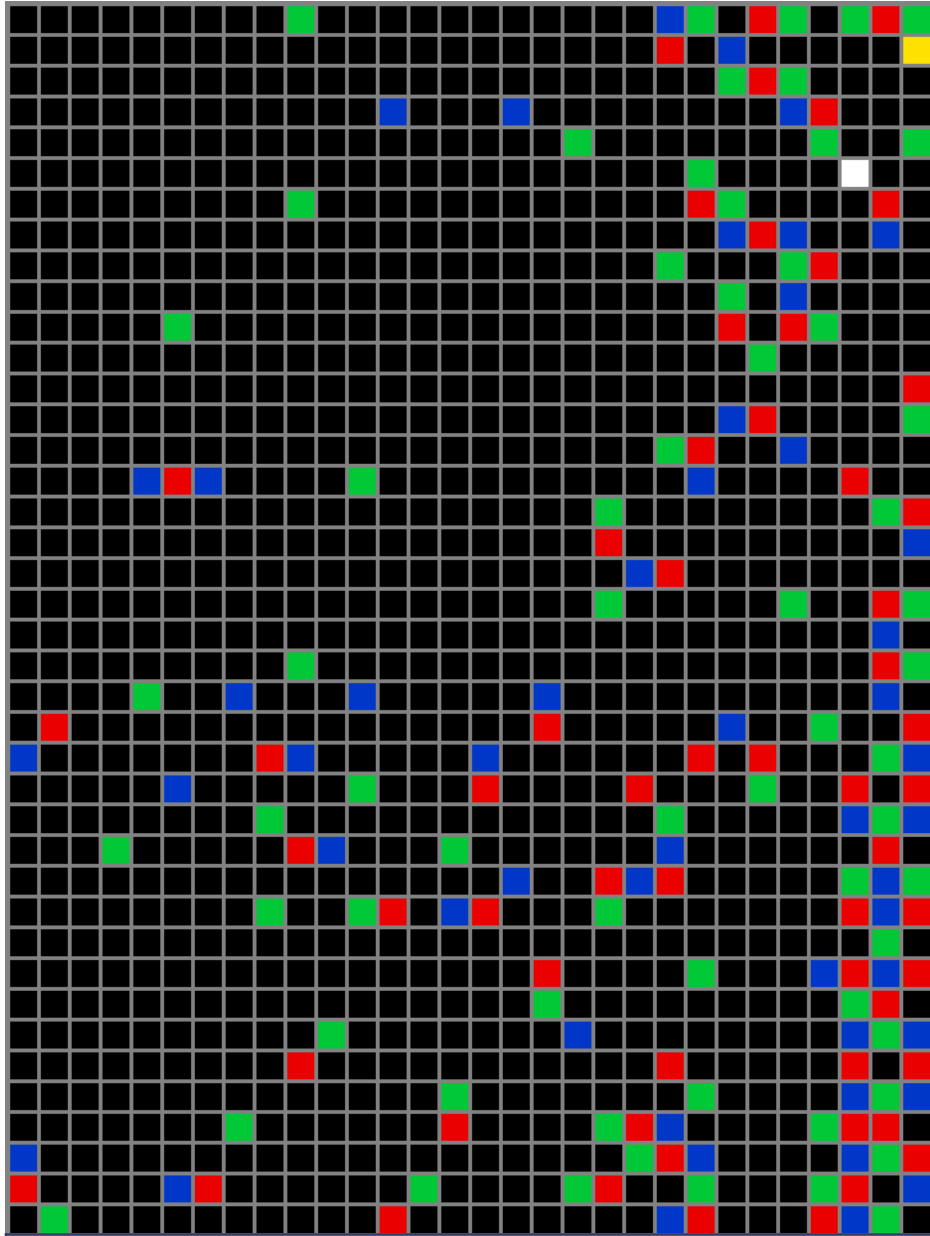
Pixel Art



13



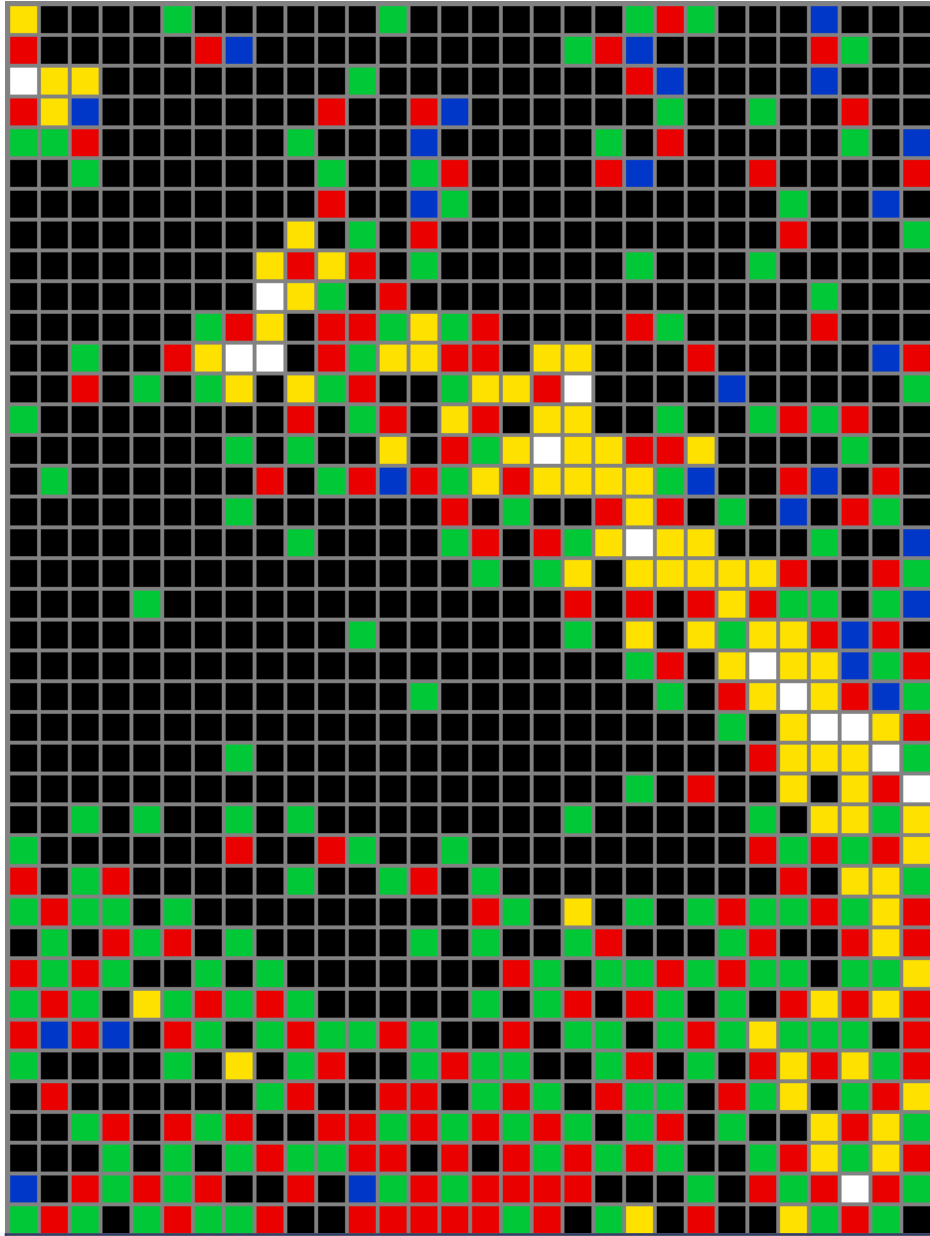
Pixel Art



14



Pixel Art

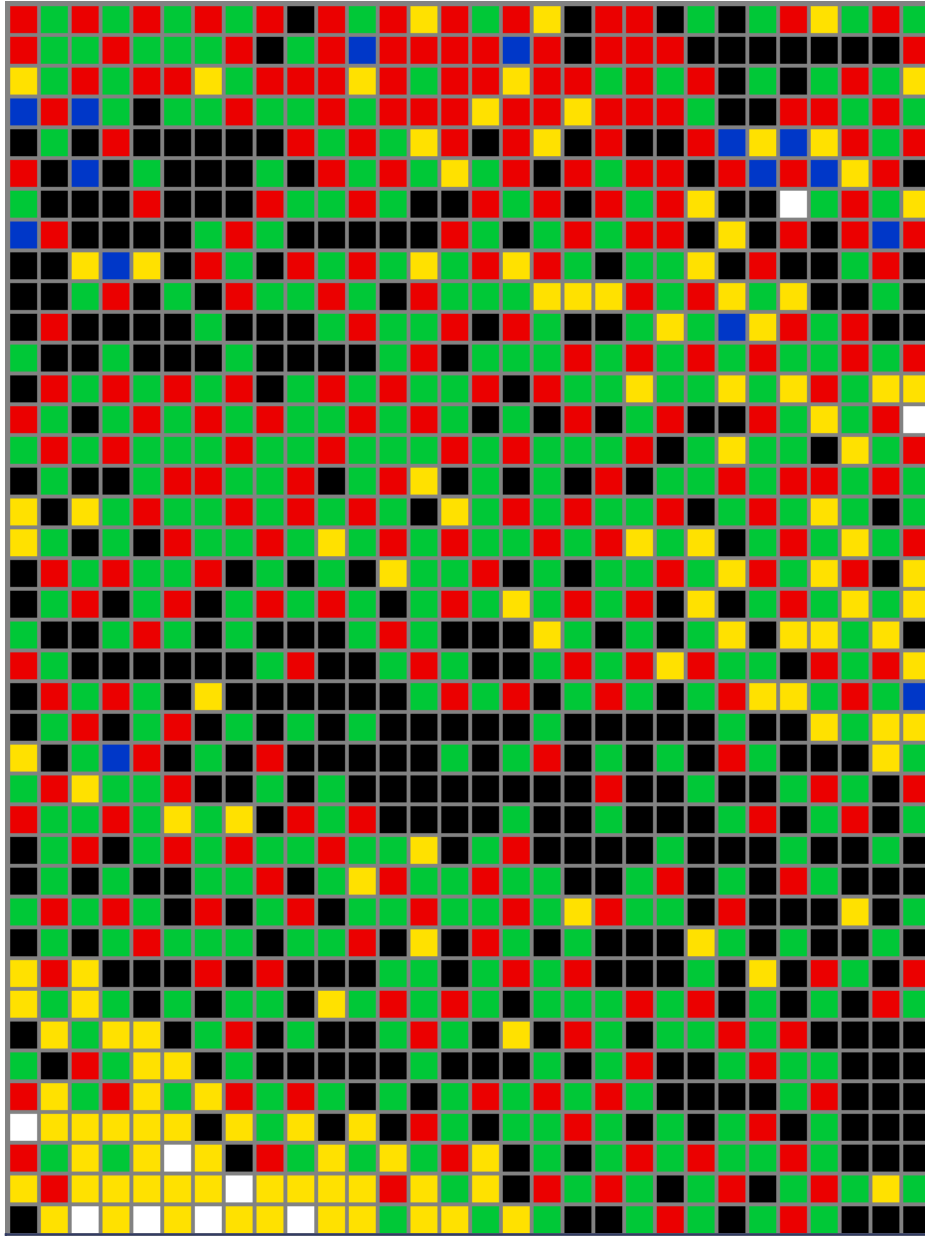


15





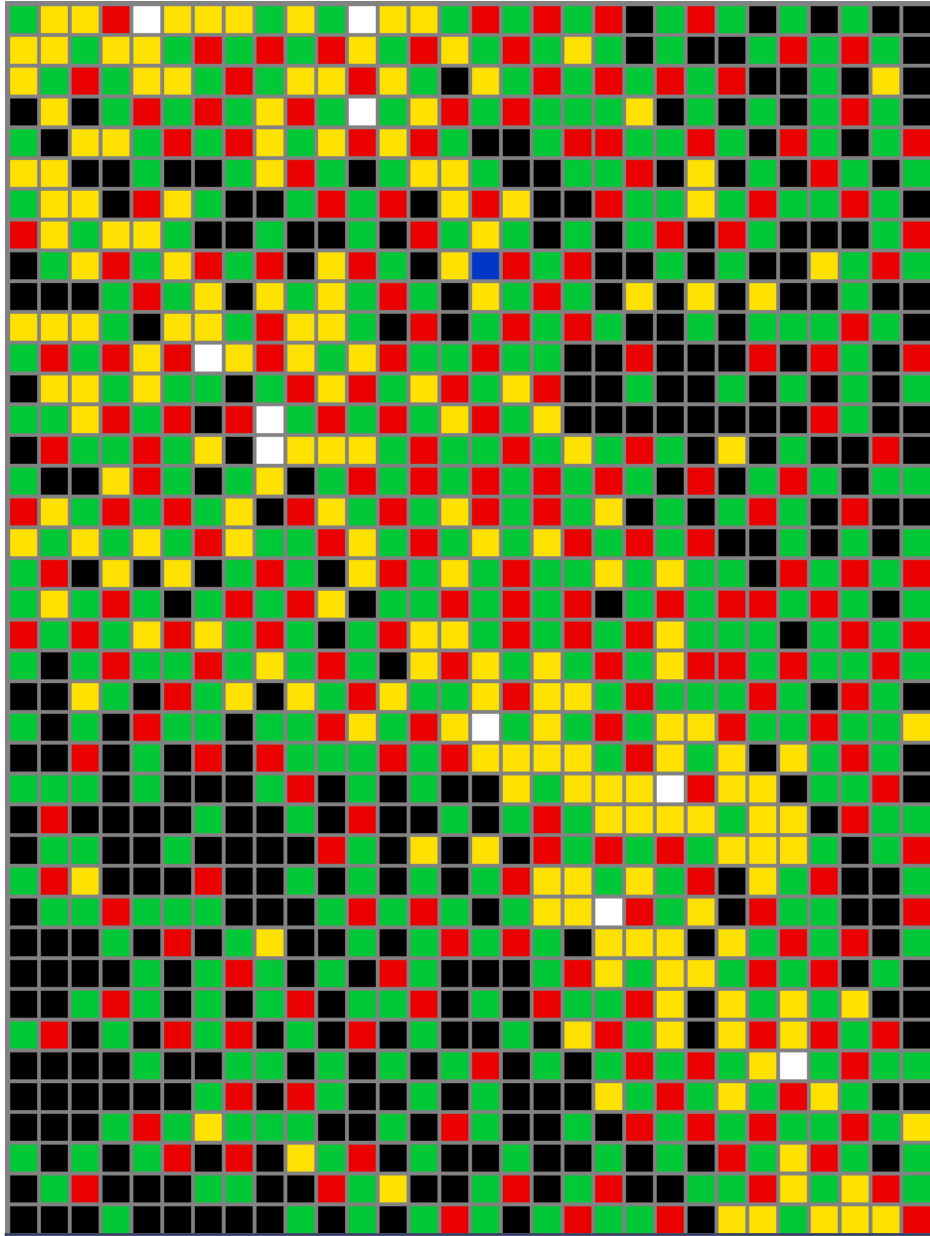
Pixel Art



16



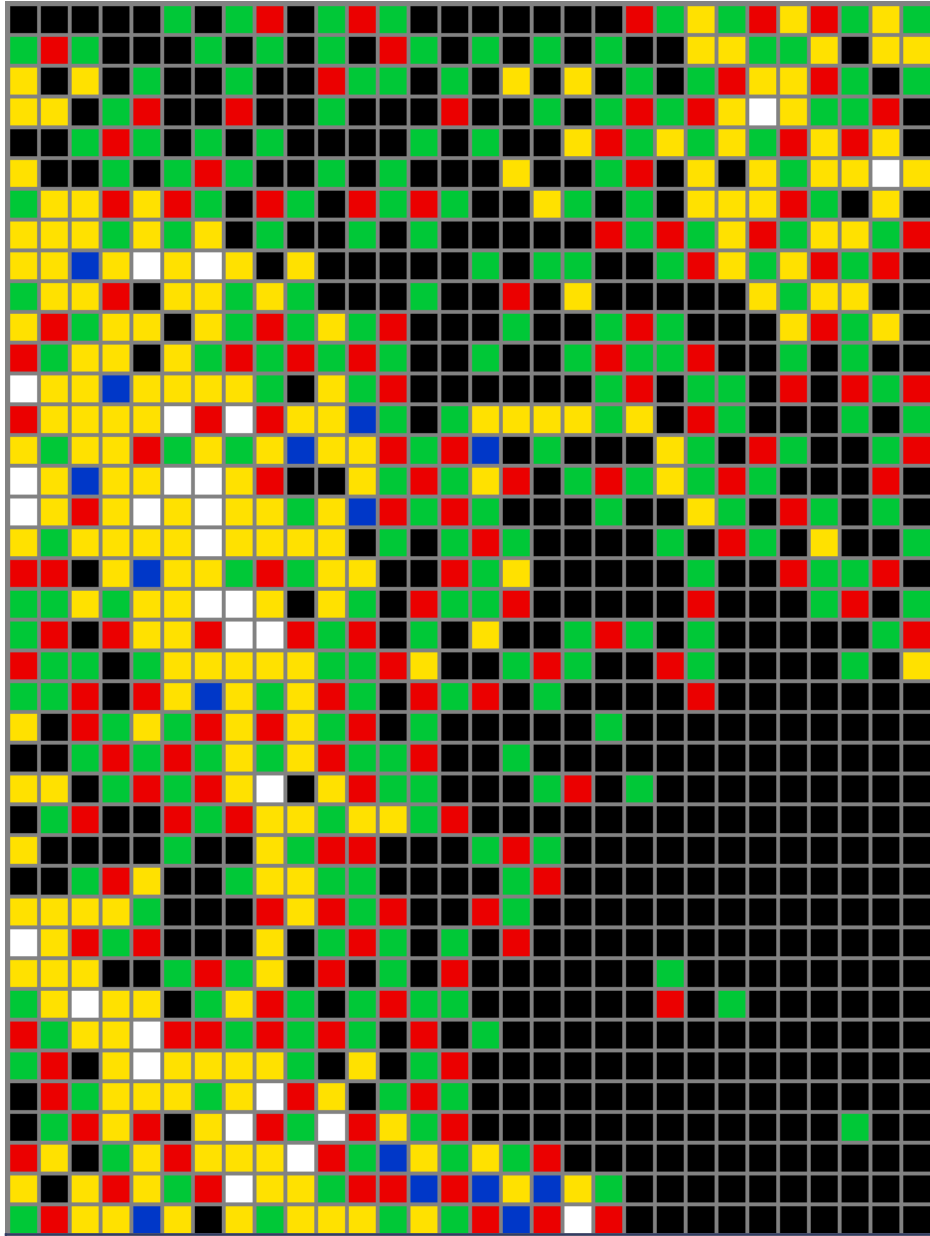
Pixel Art



17



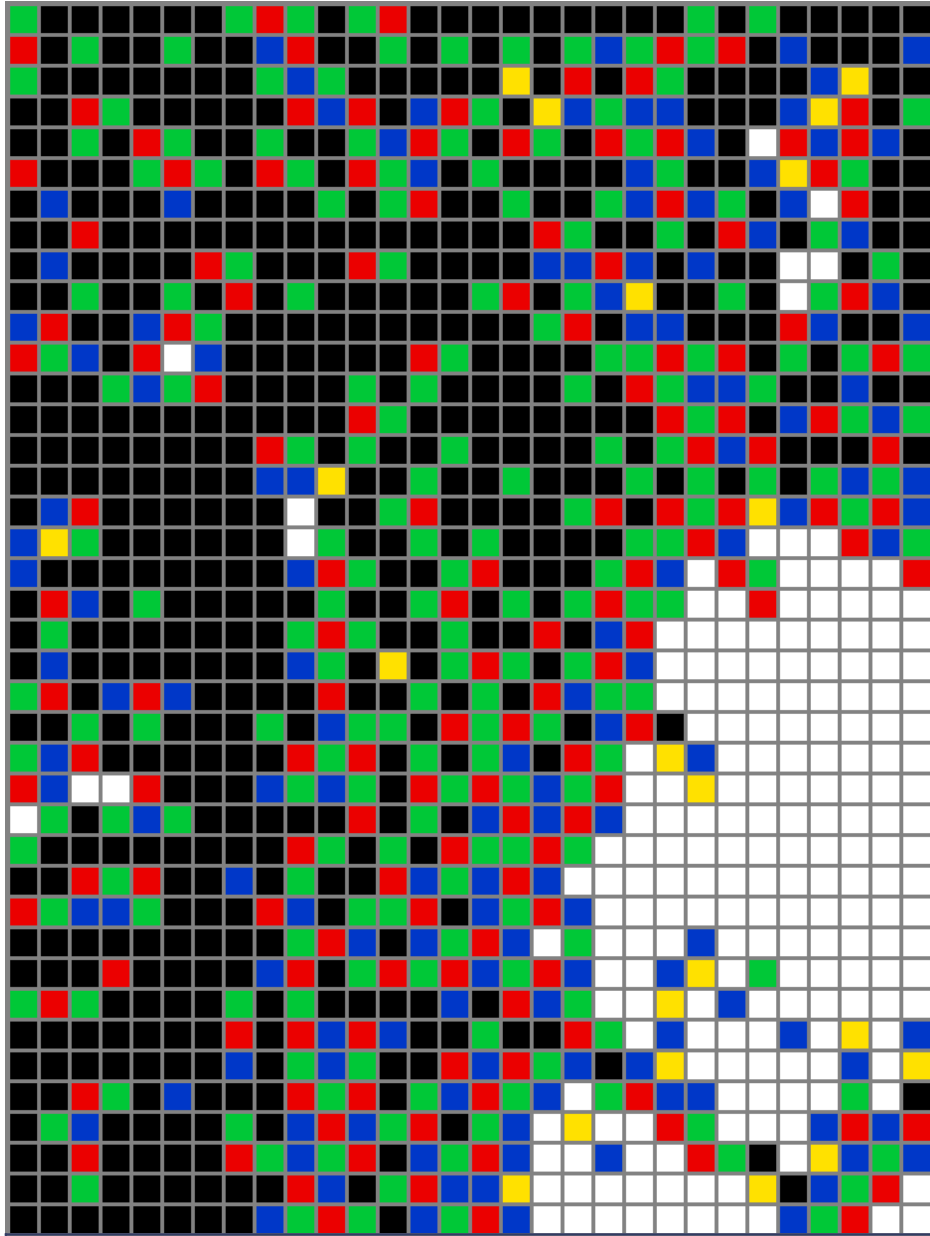
Pixel Art



18



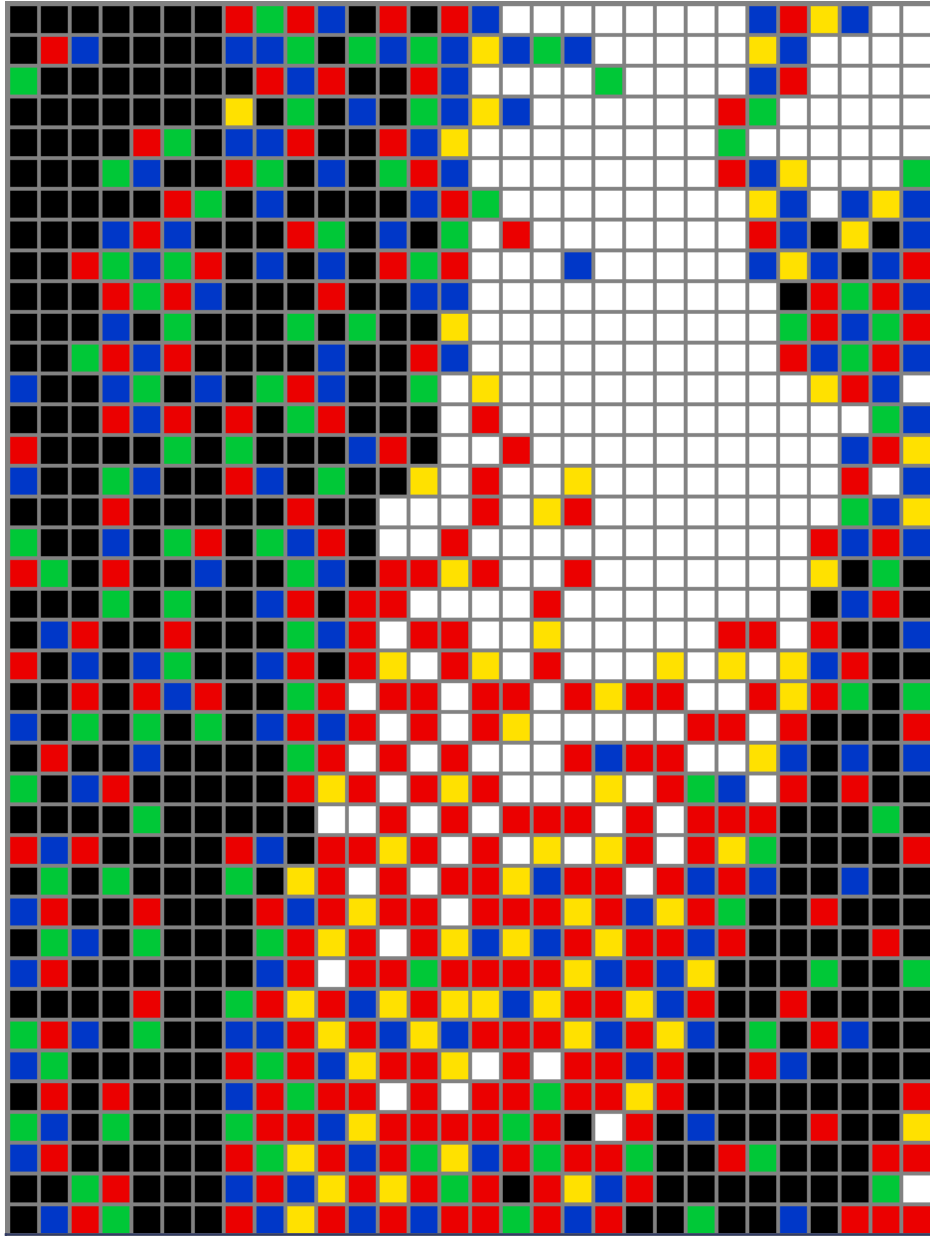
Pixel Art



19



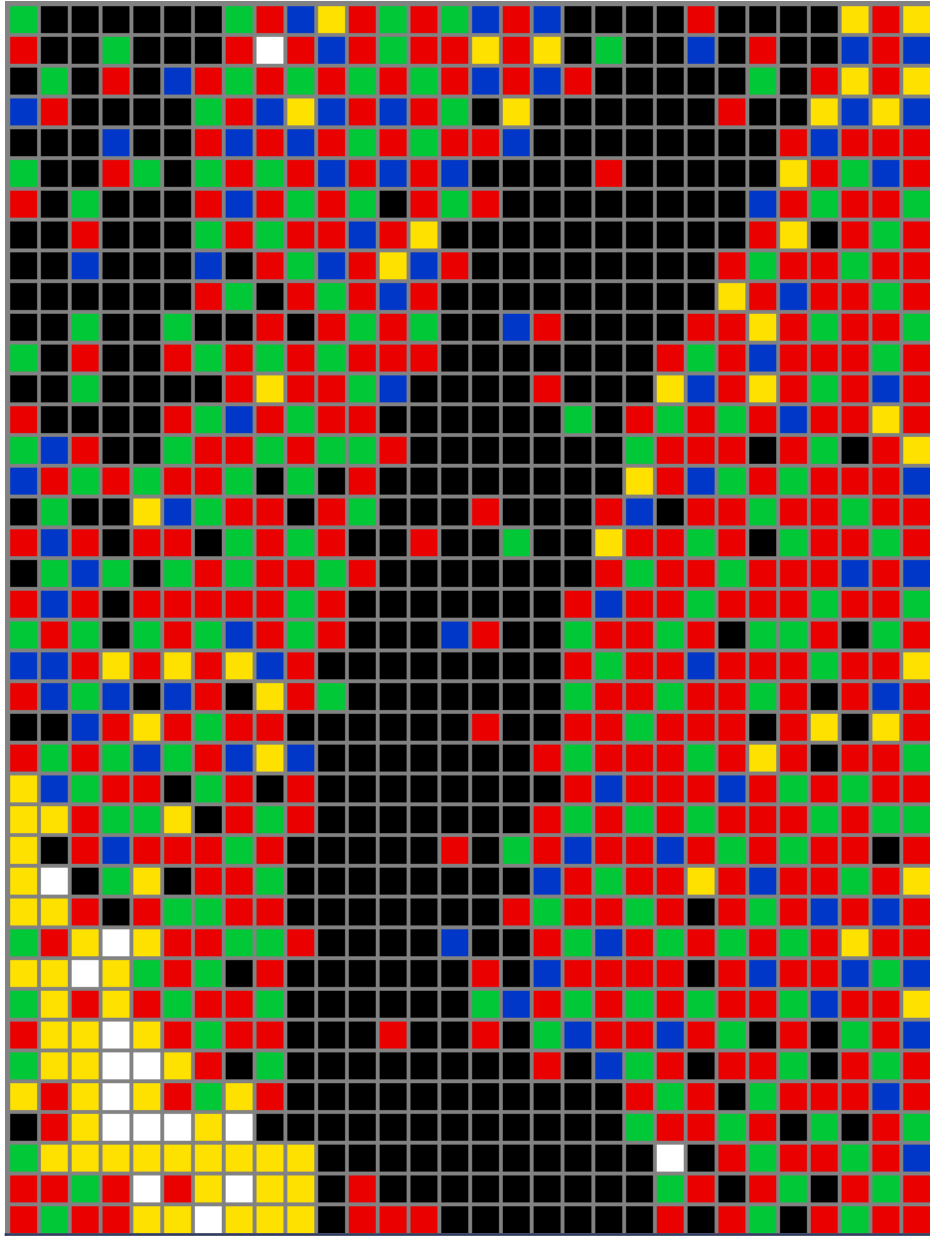
Pixel Art



20



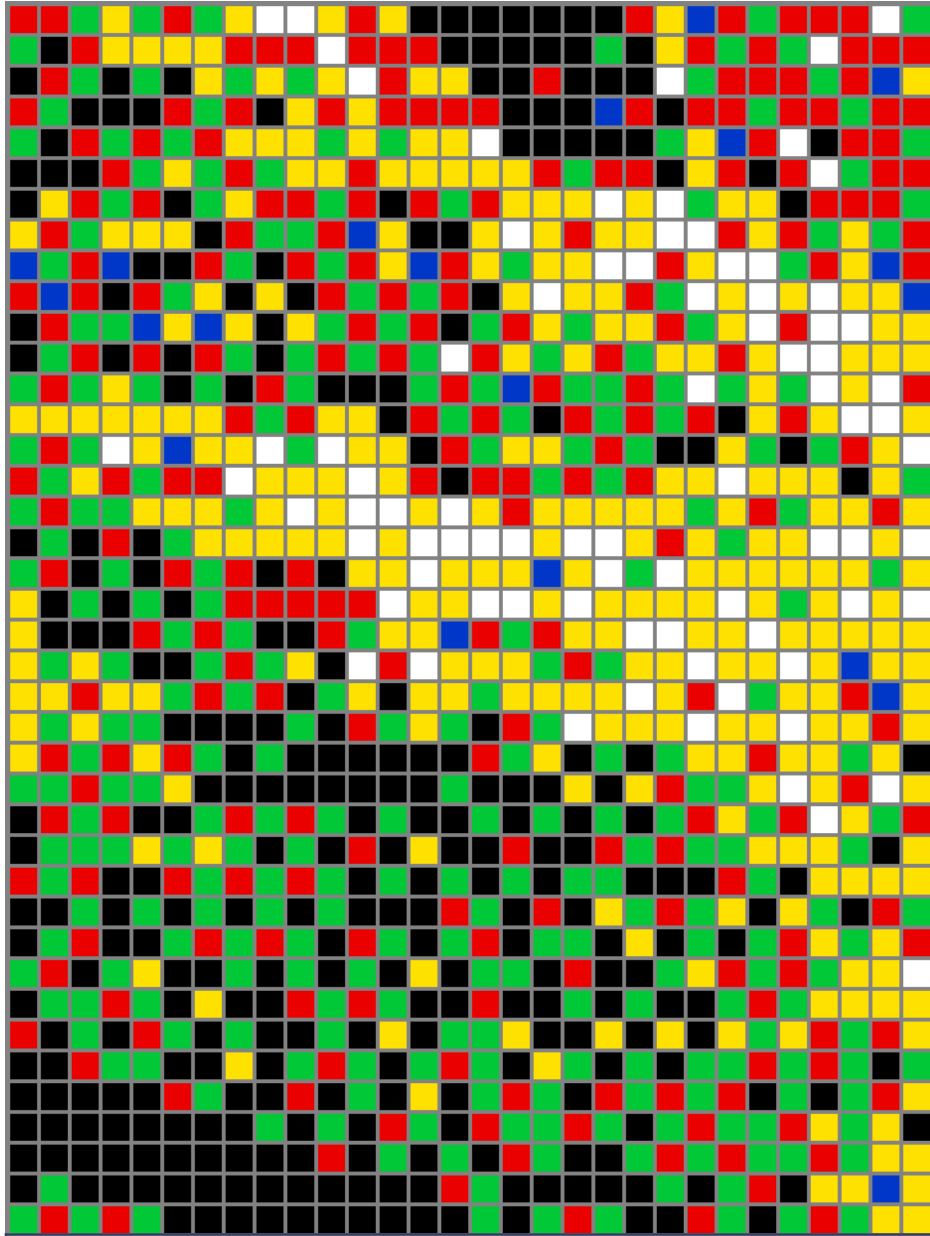
Pixel Art



21



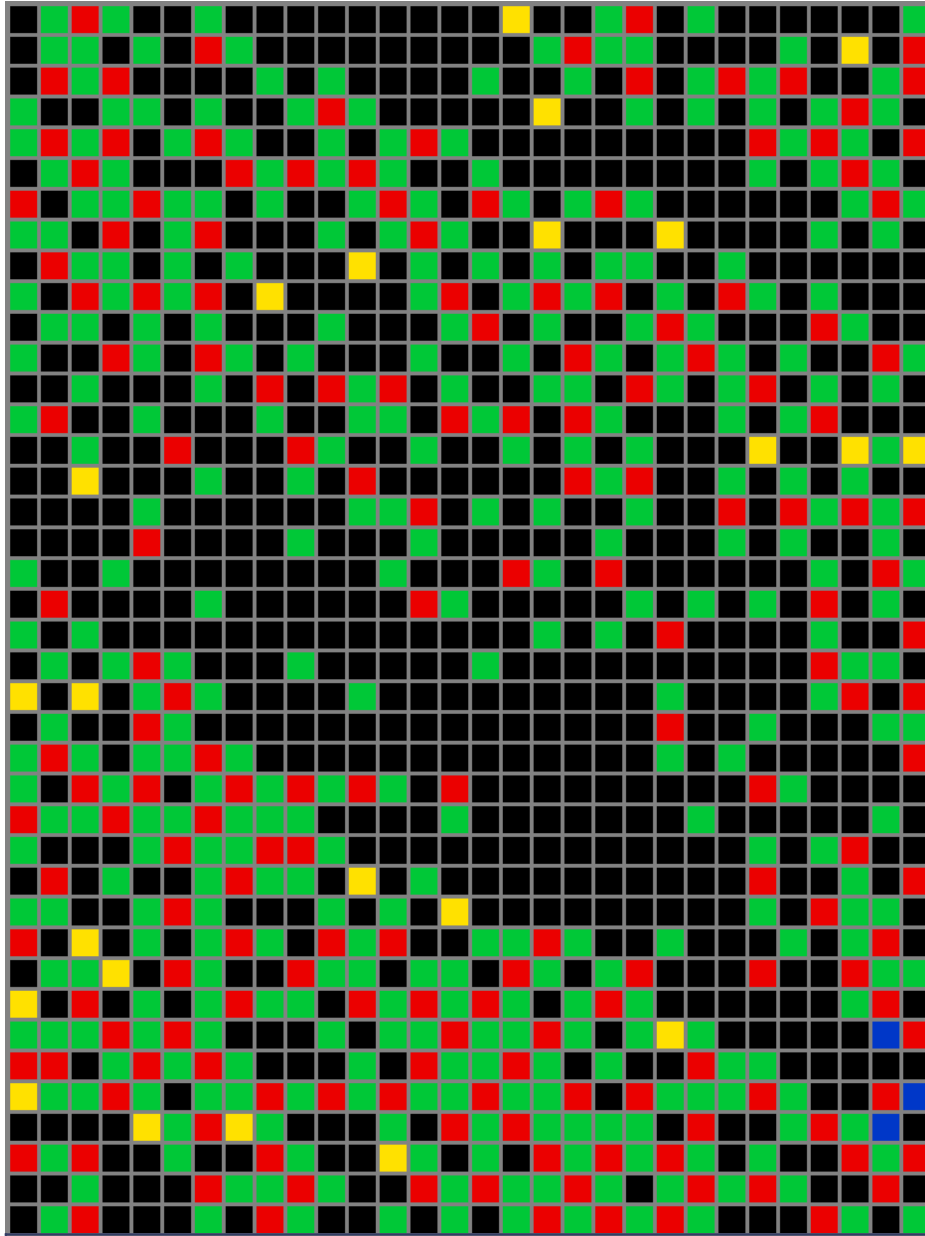
Pixel Art



22



Pixel Art

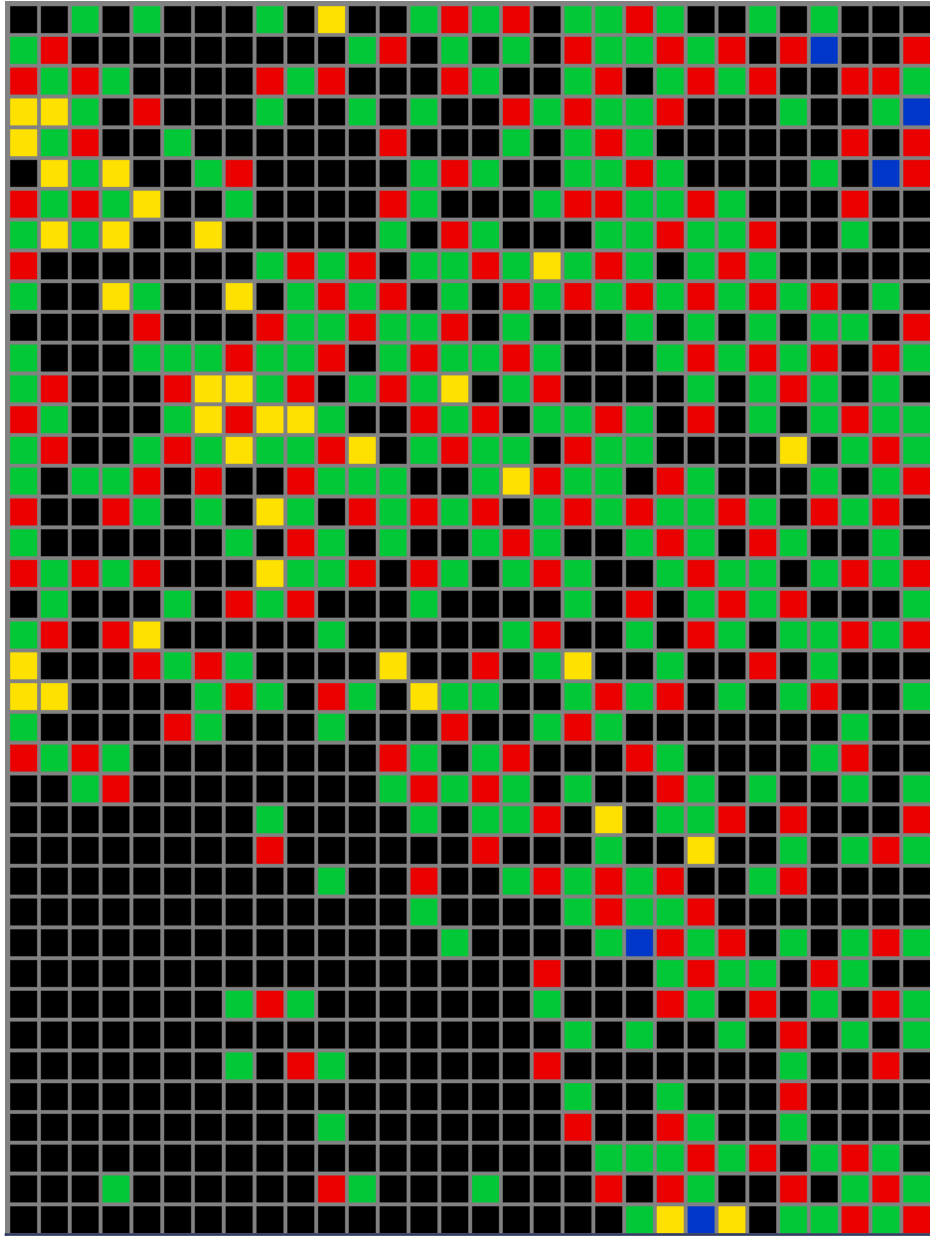


23





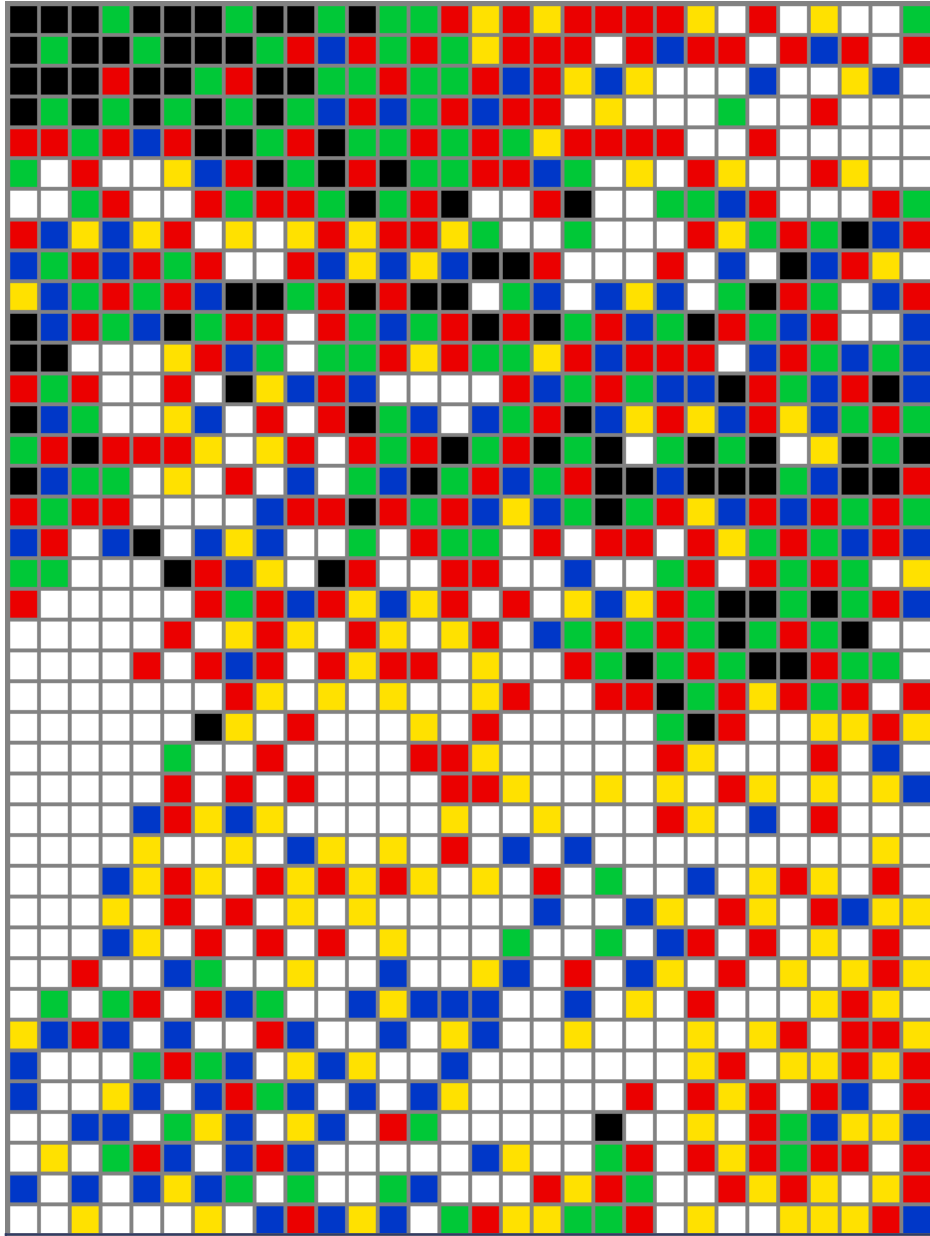
Pixel Art



24



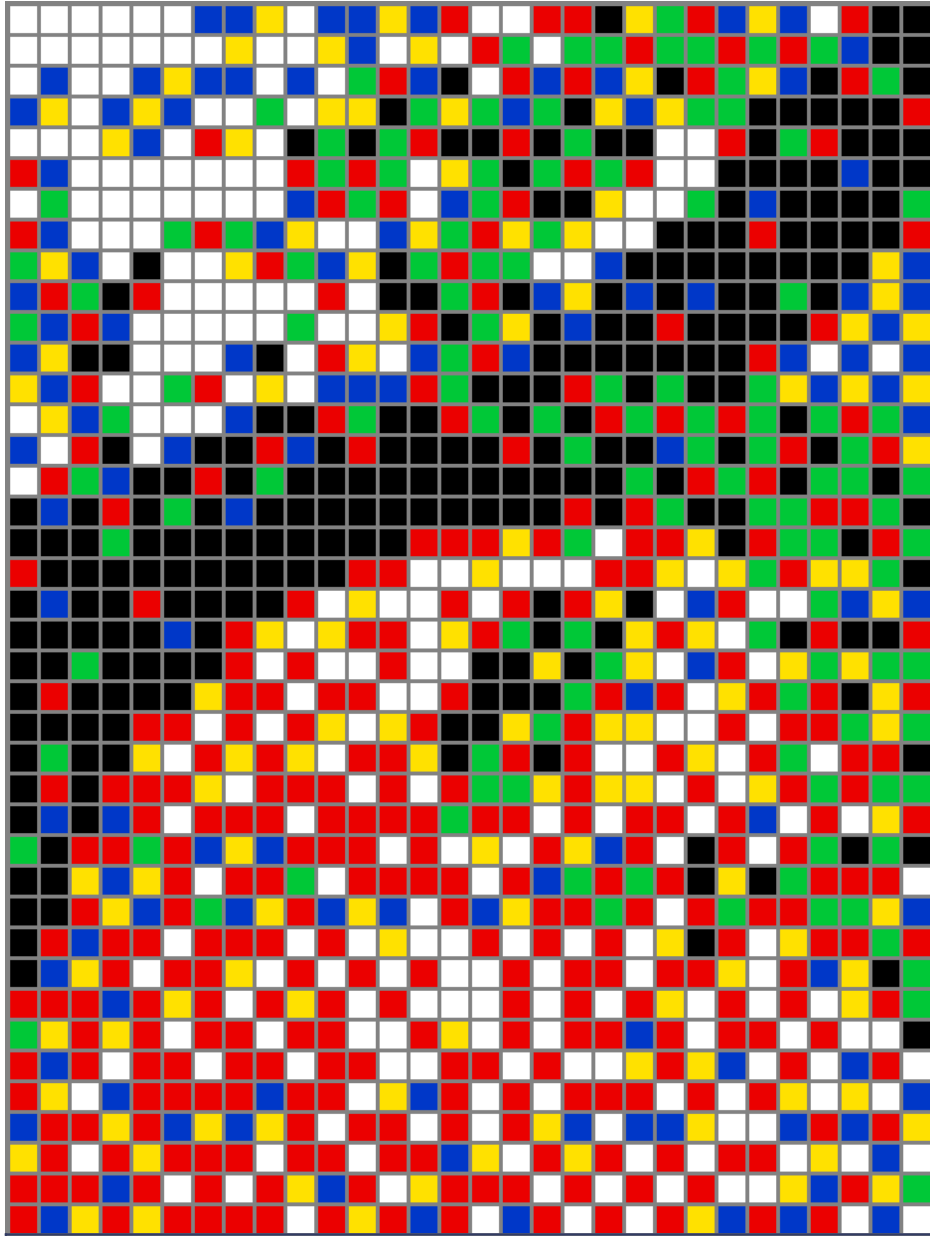
Pixel Art



25



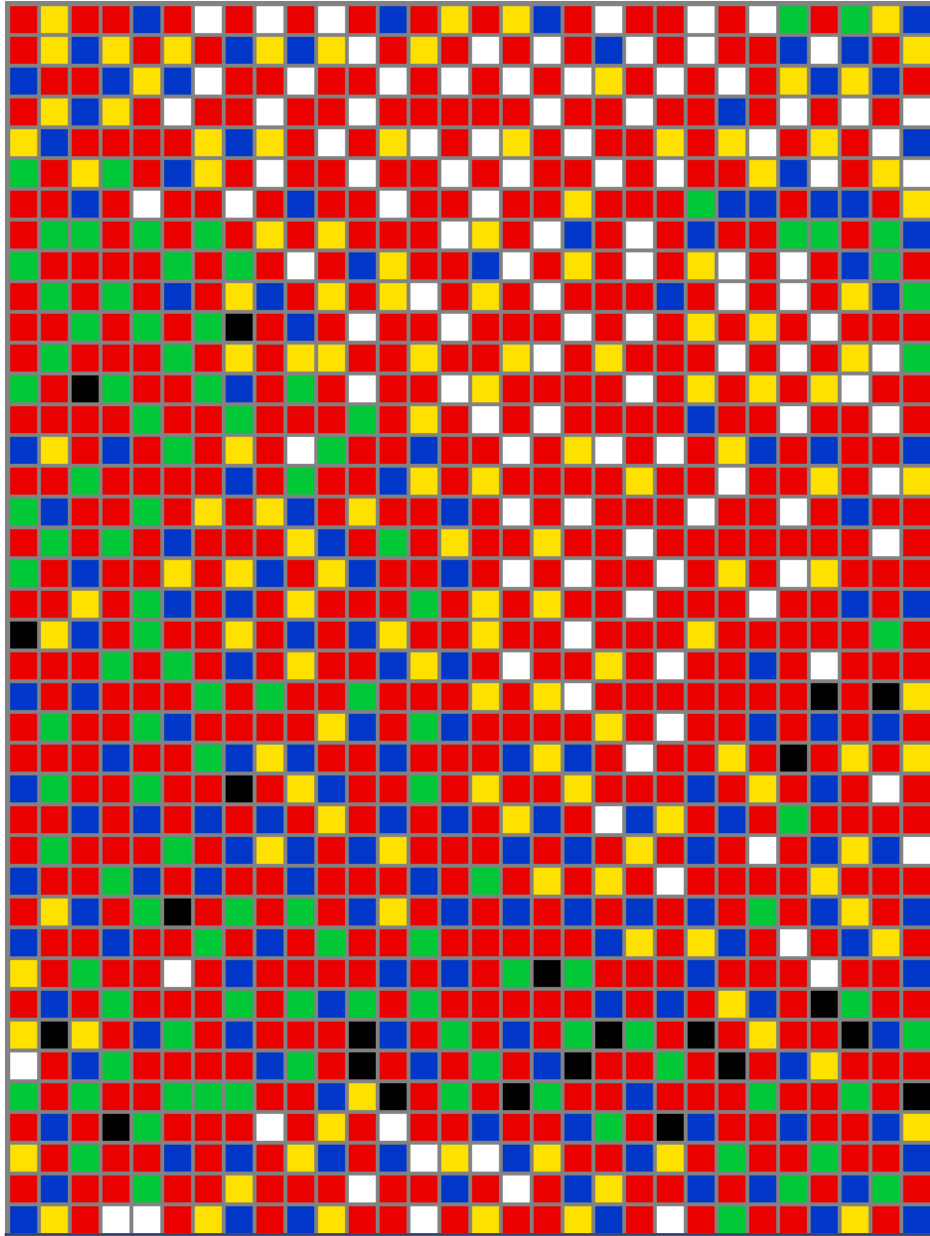
Pixel Art



26



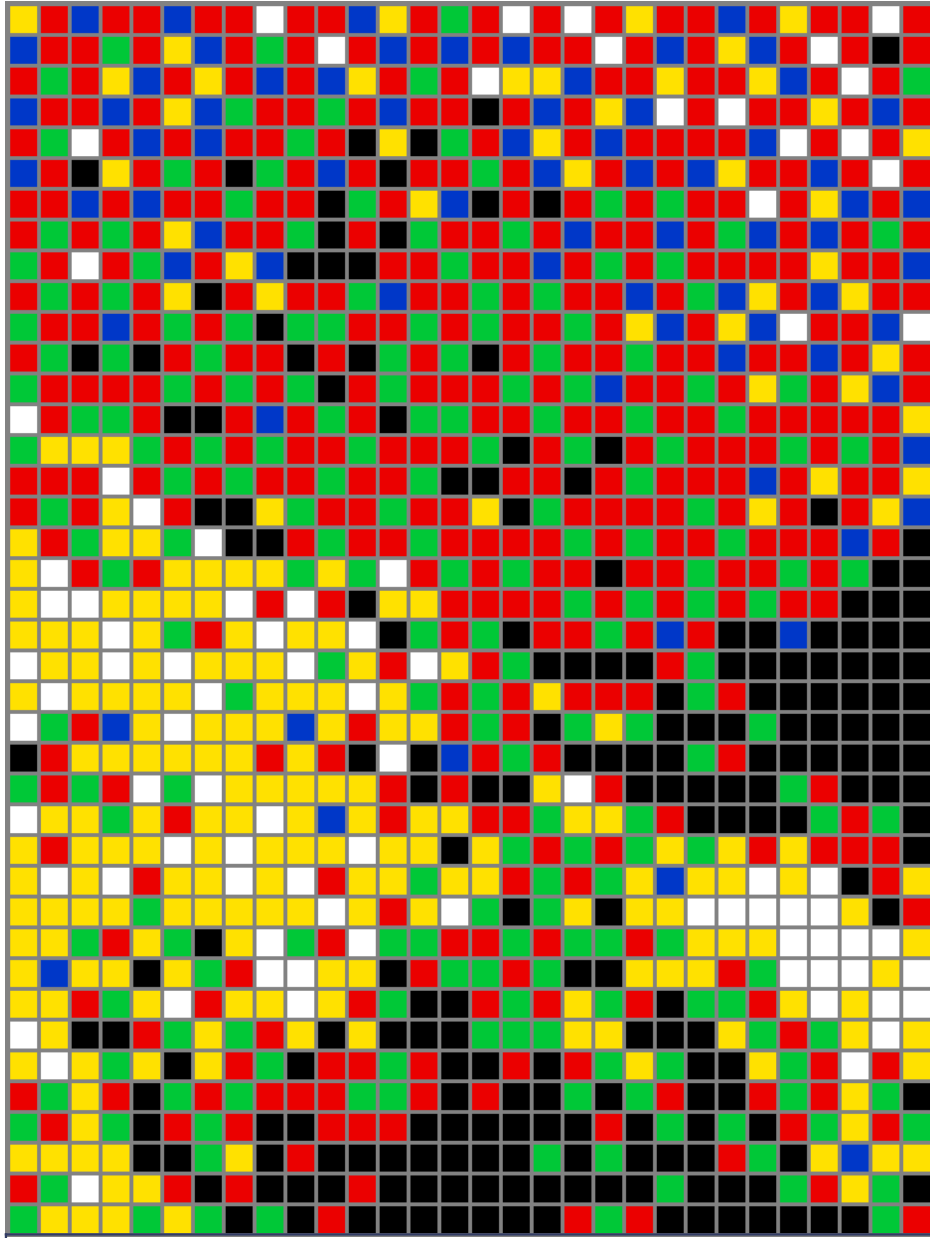
Pixel Art



27



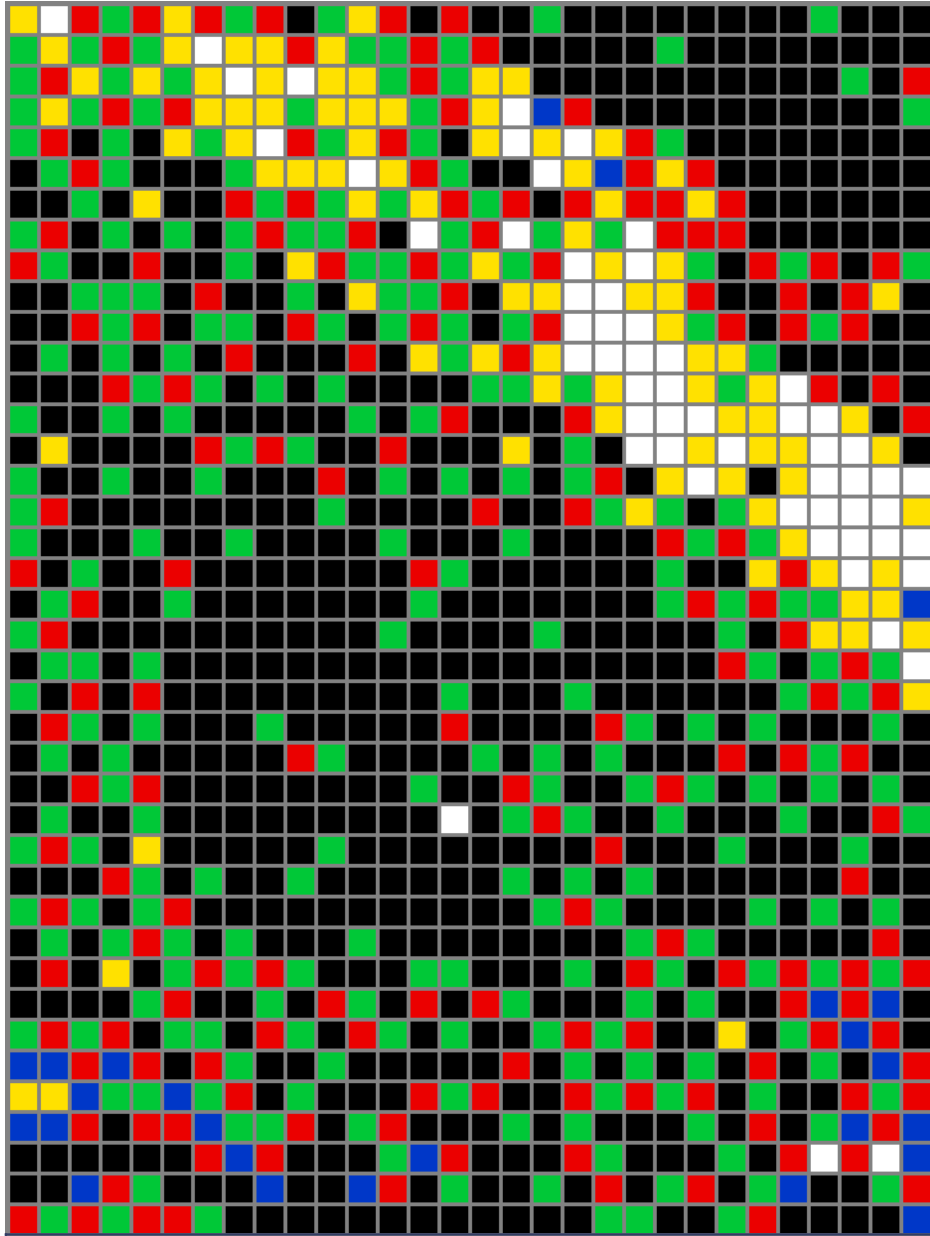
Pixel Art



28

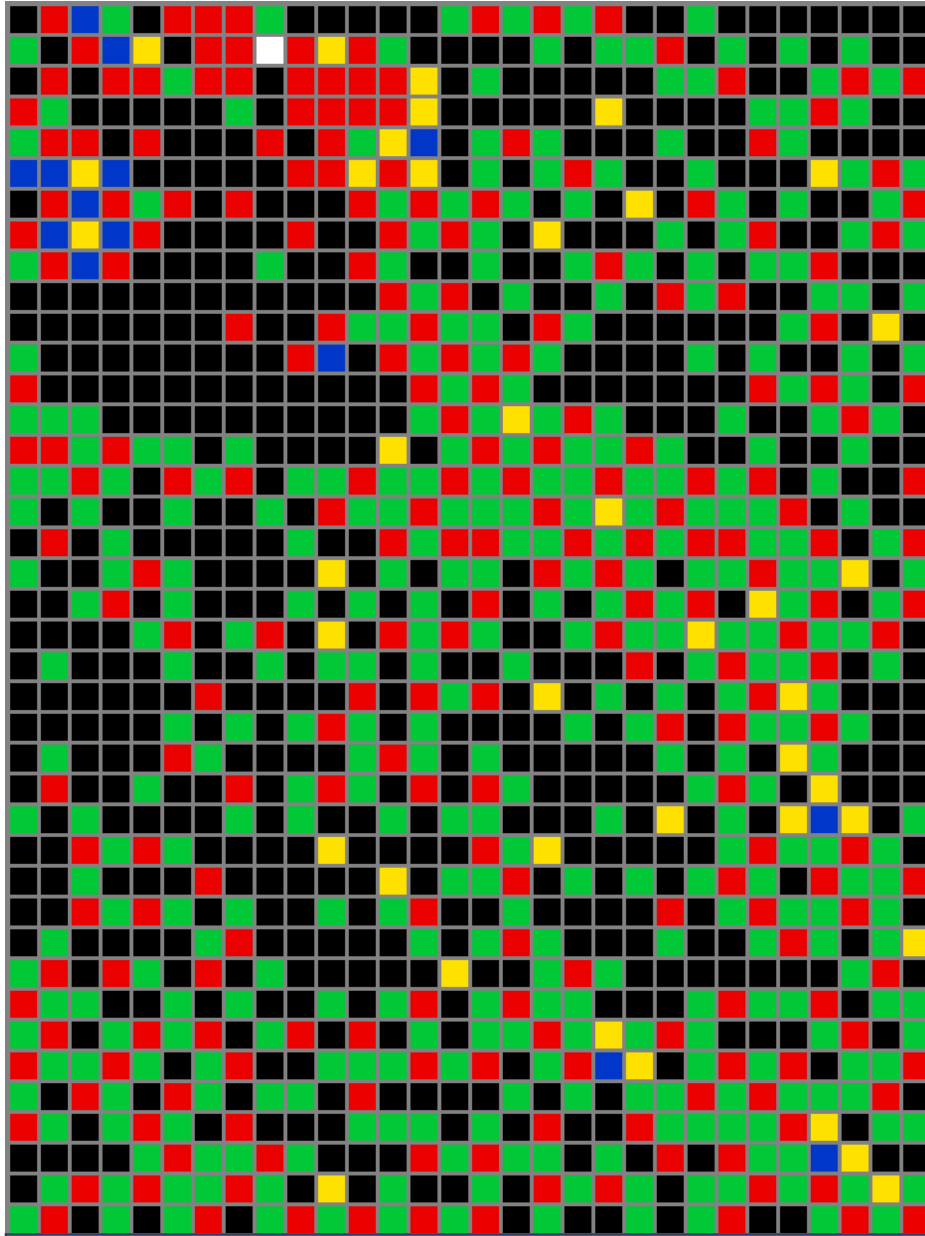


Pixel Art





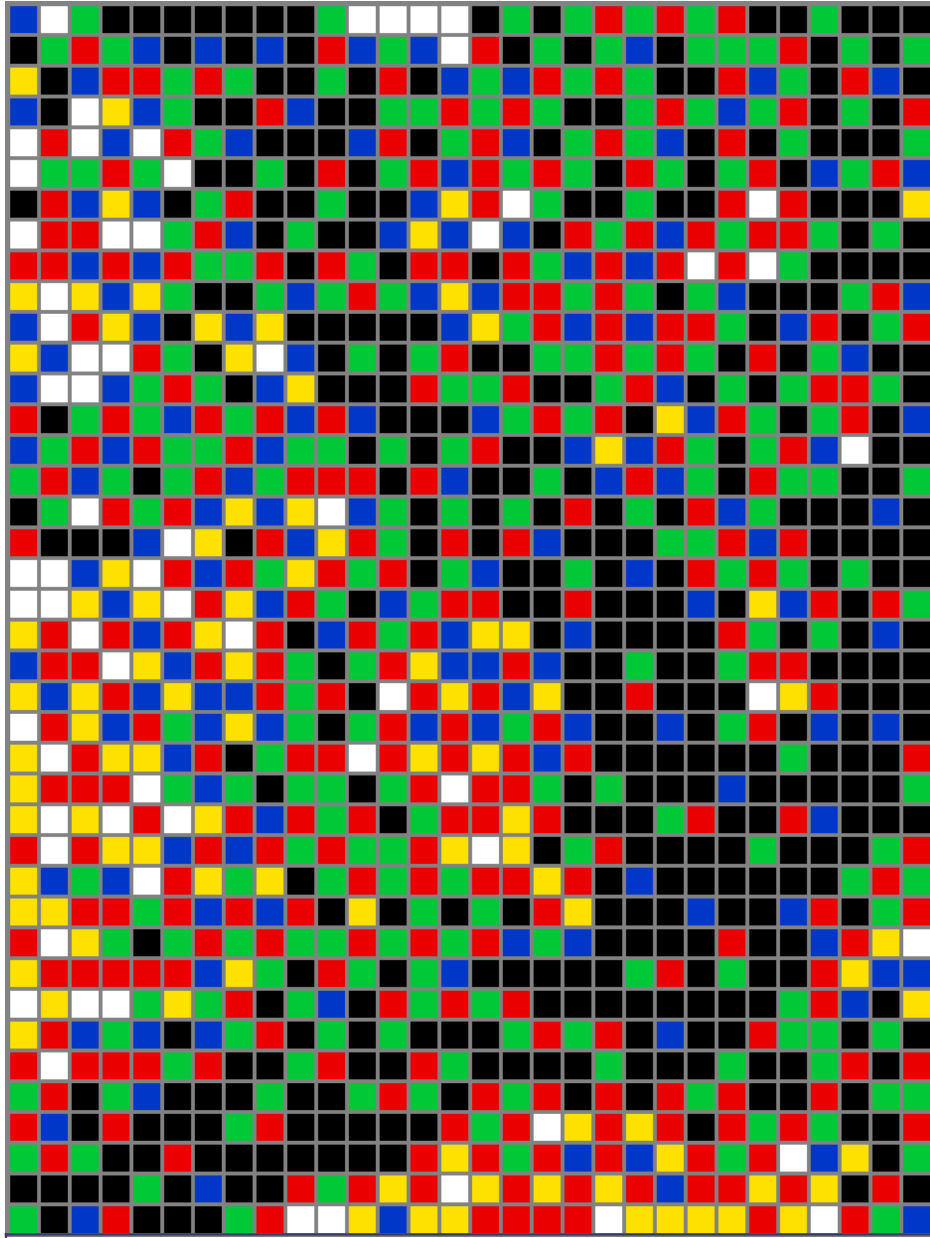
Pixel Art



30



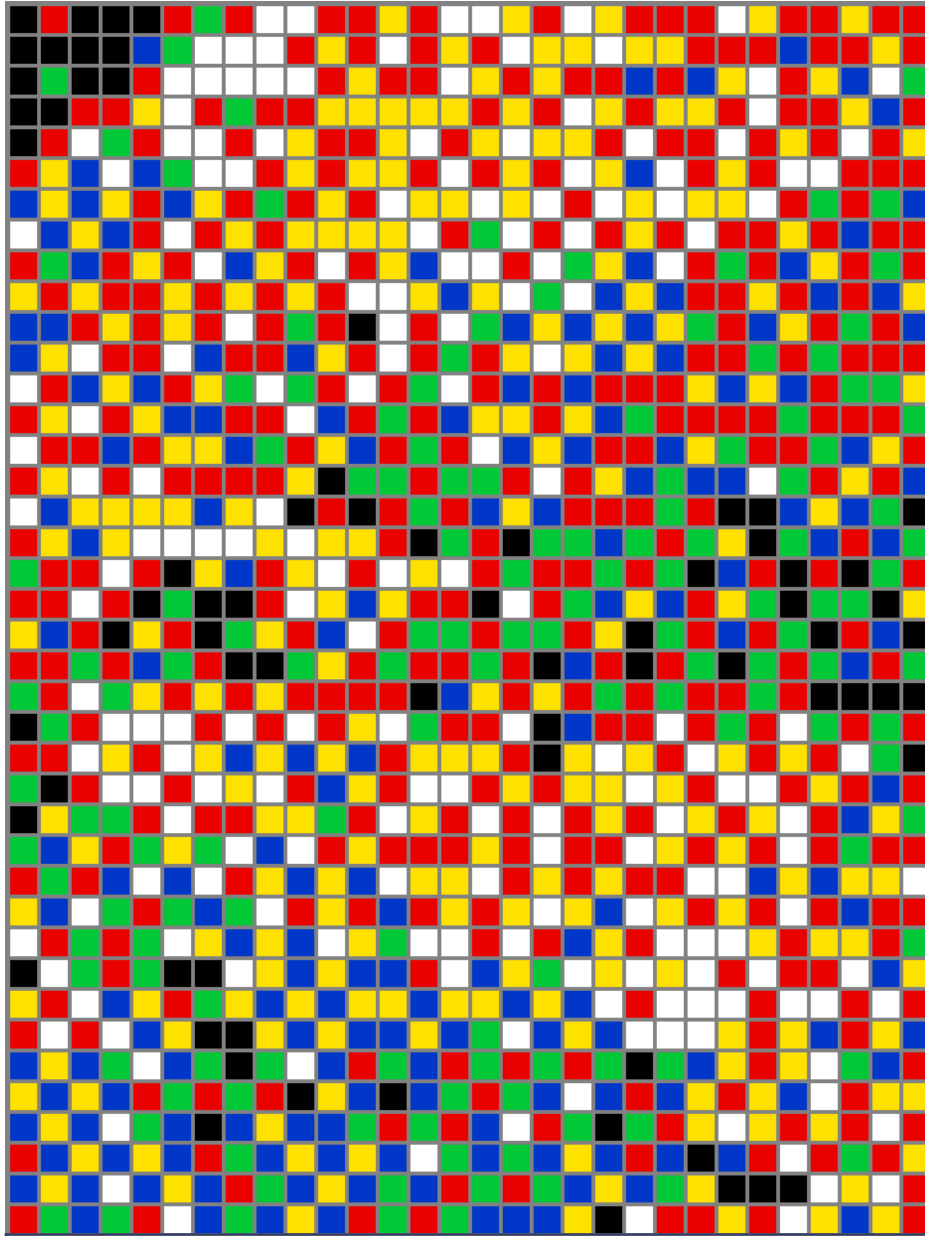
Pixel Art







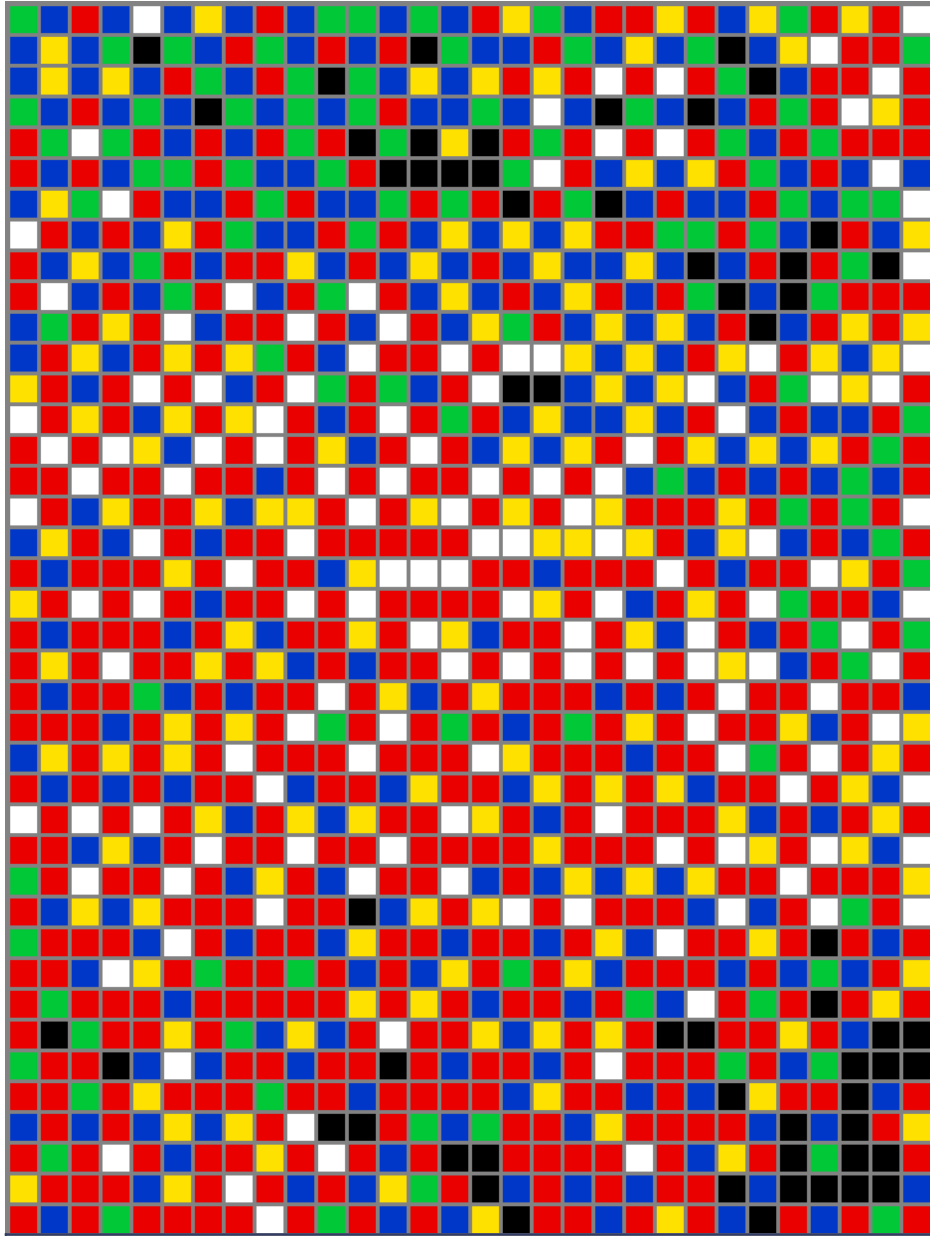
Pixel Art



32



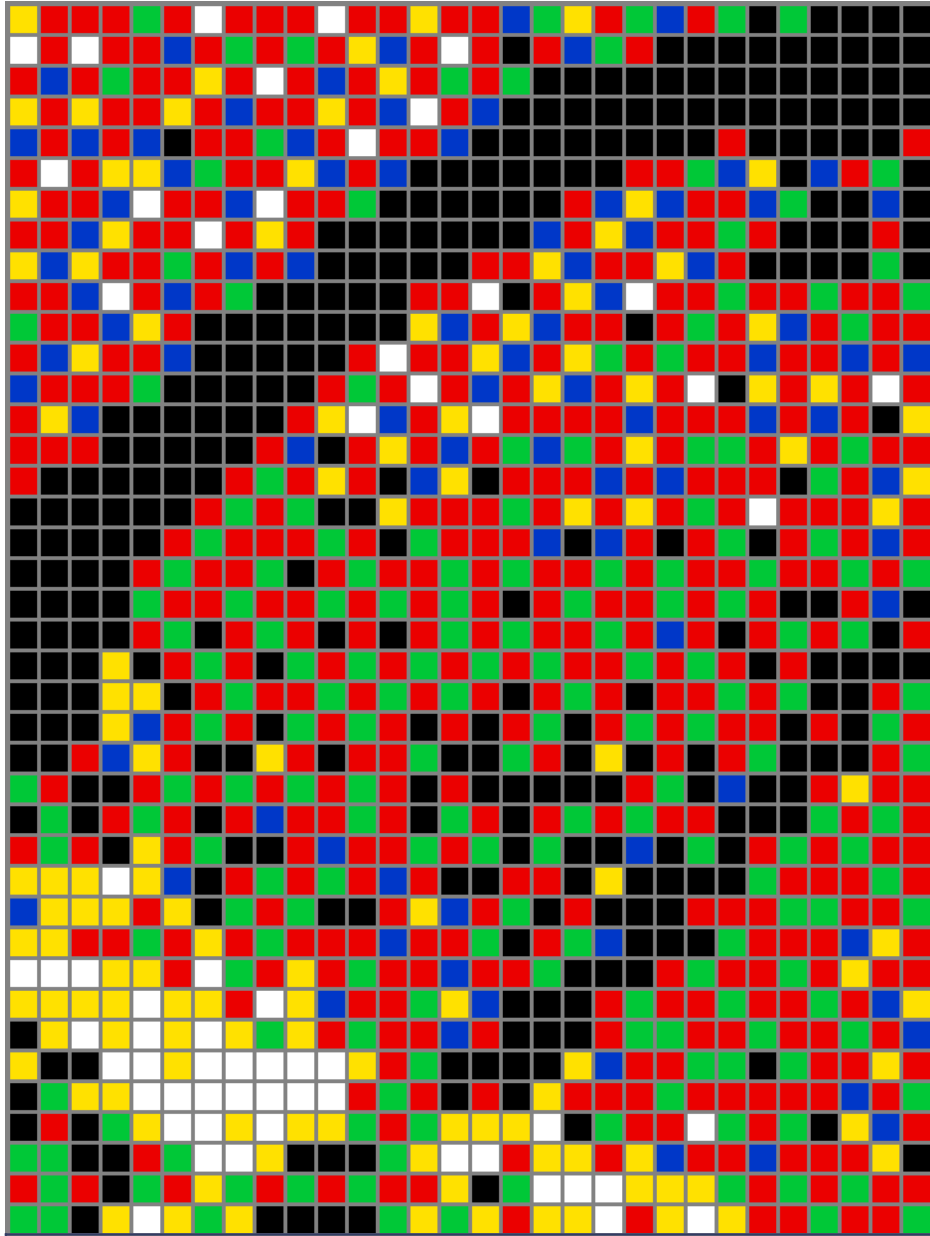
Pixel Art



33



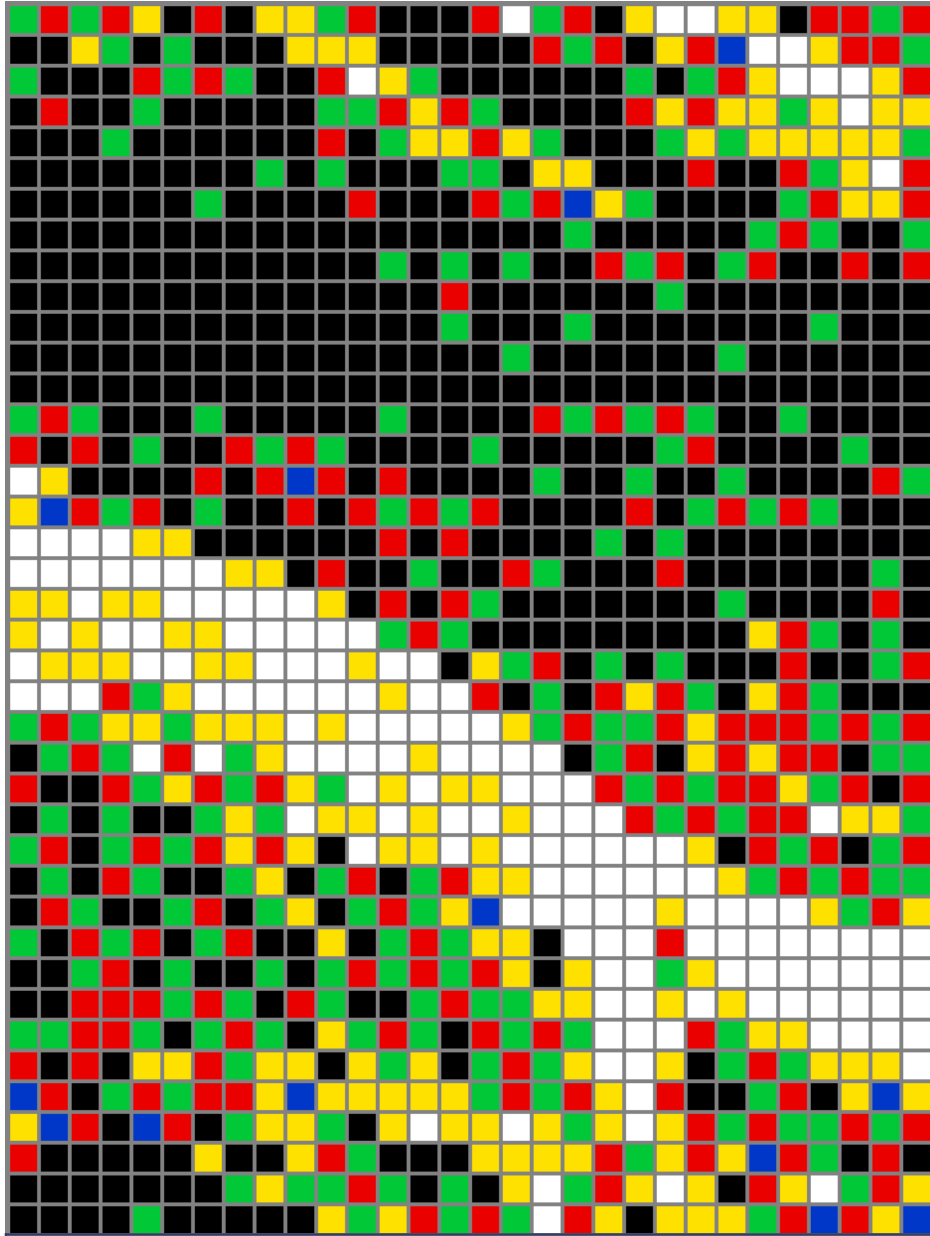
Pixel Art



34



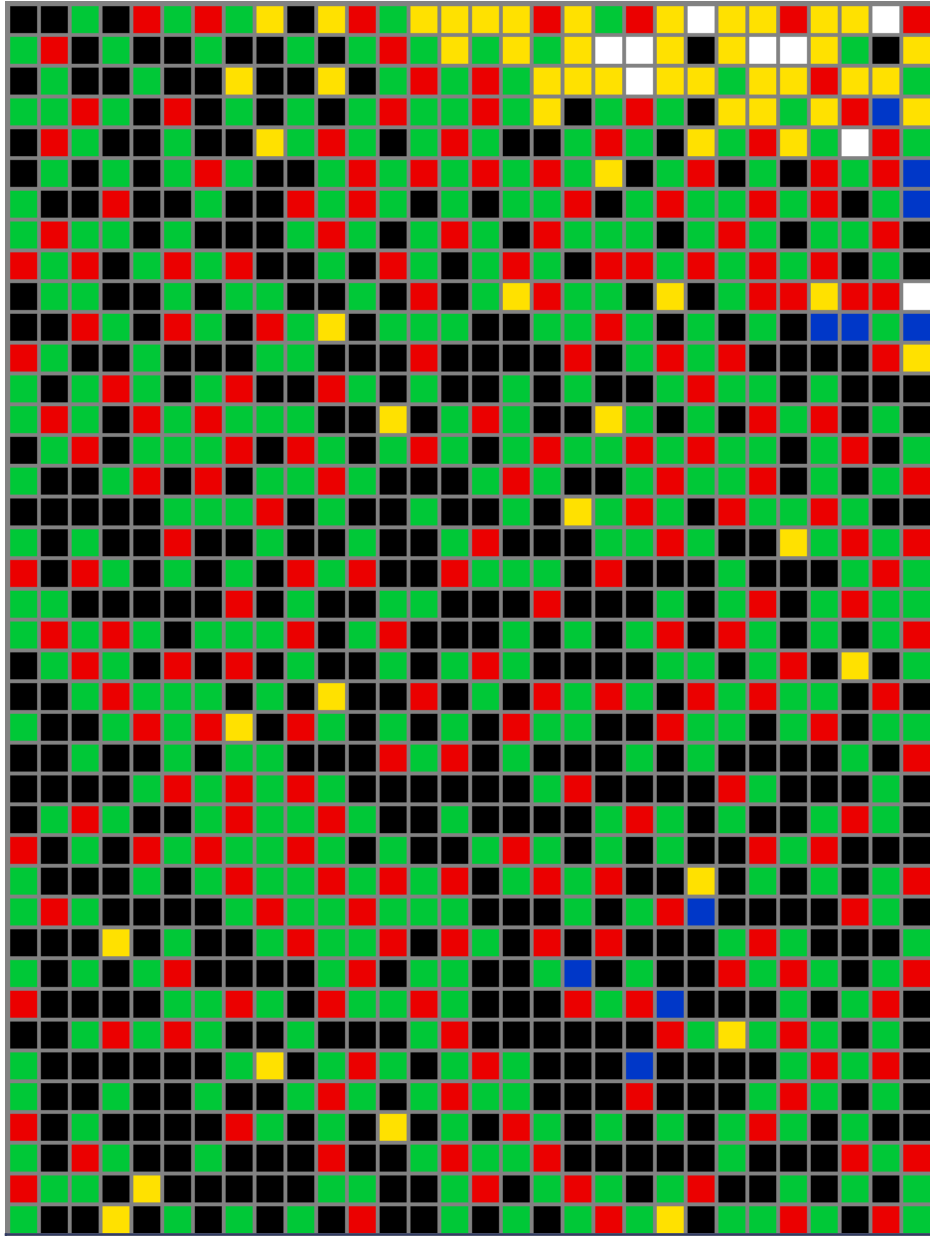
Pixel Art



35



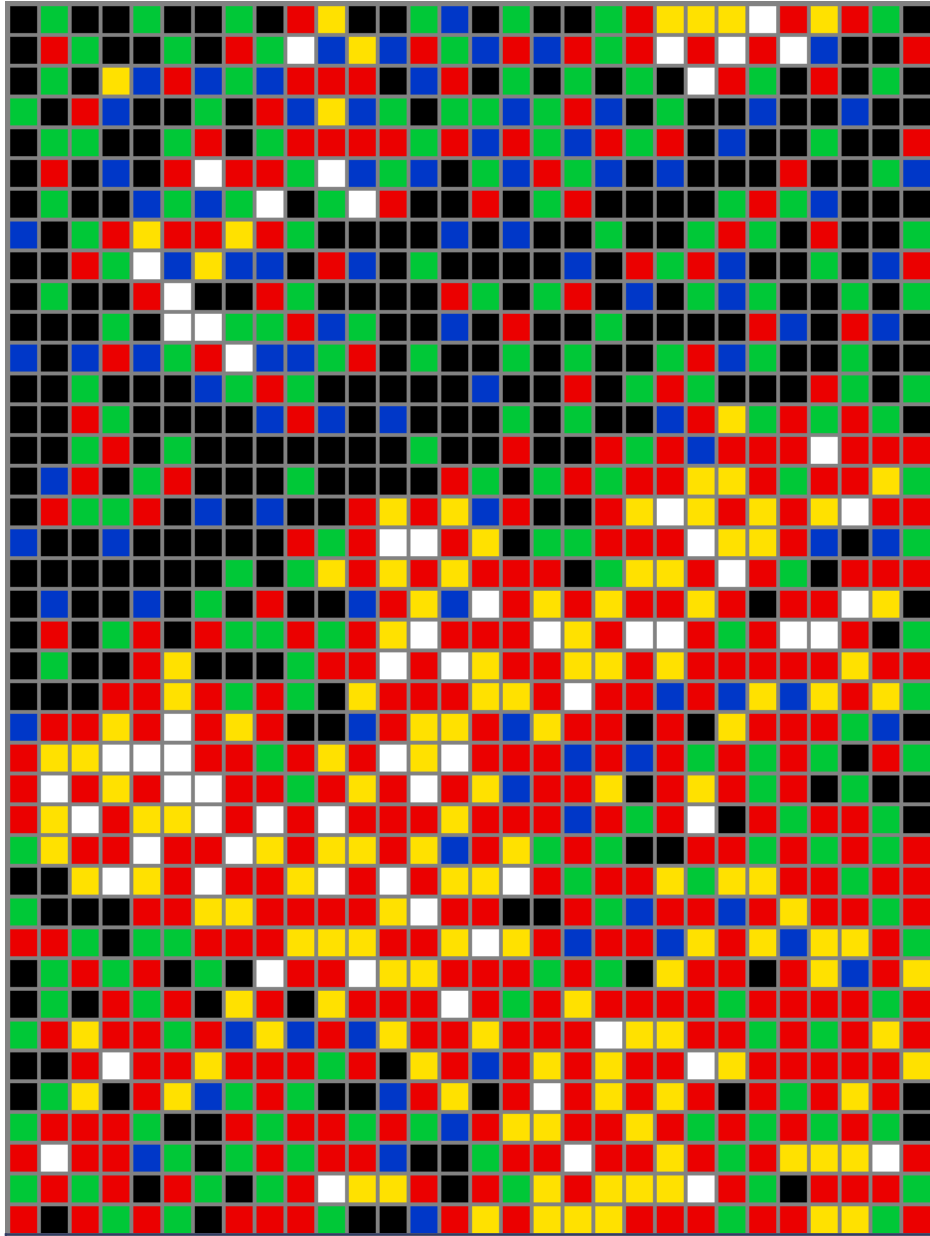
Pixel Art



36



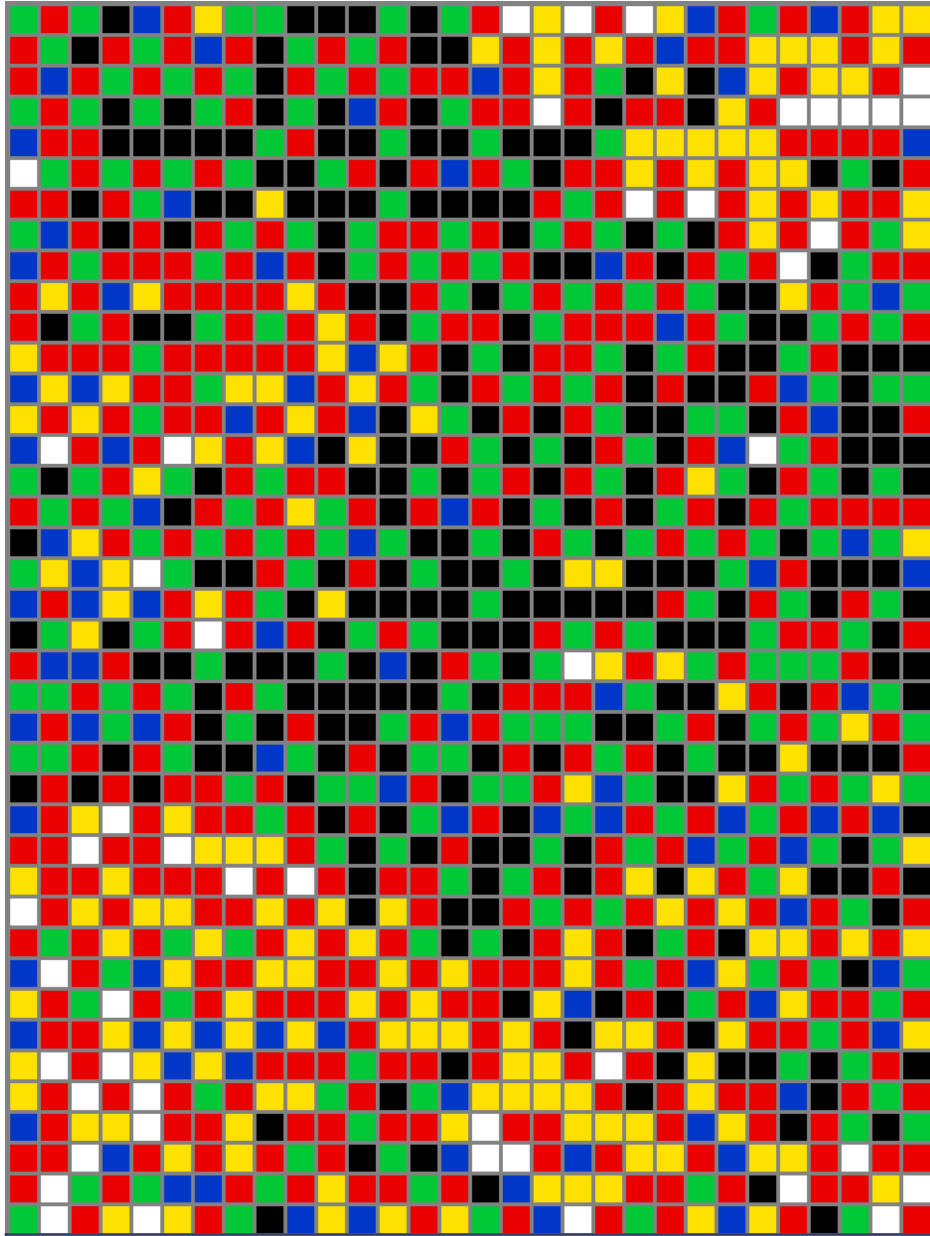
Pixel Art



37



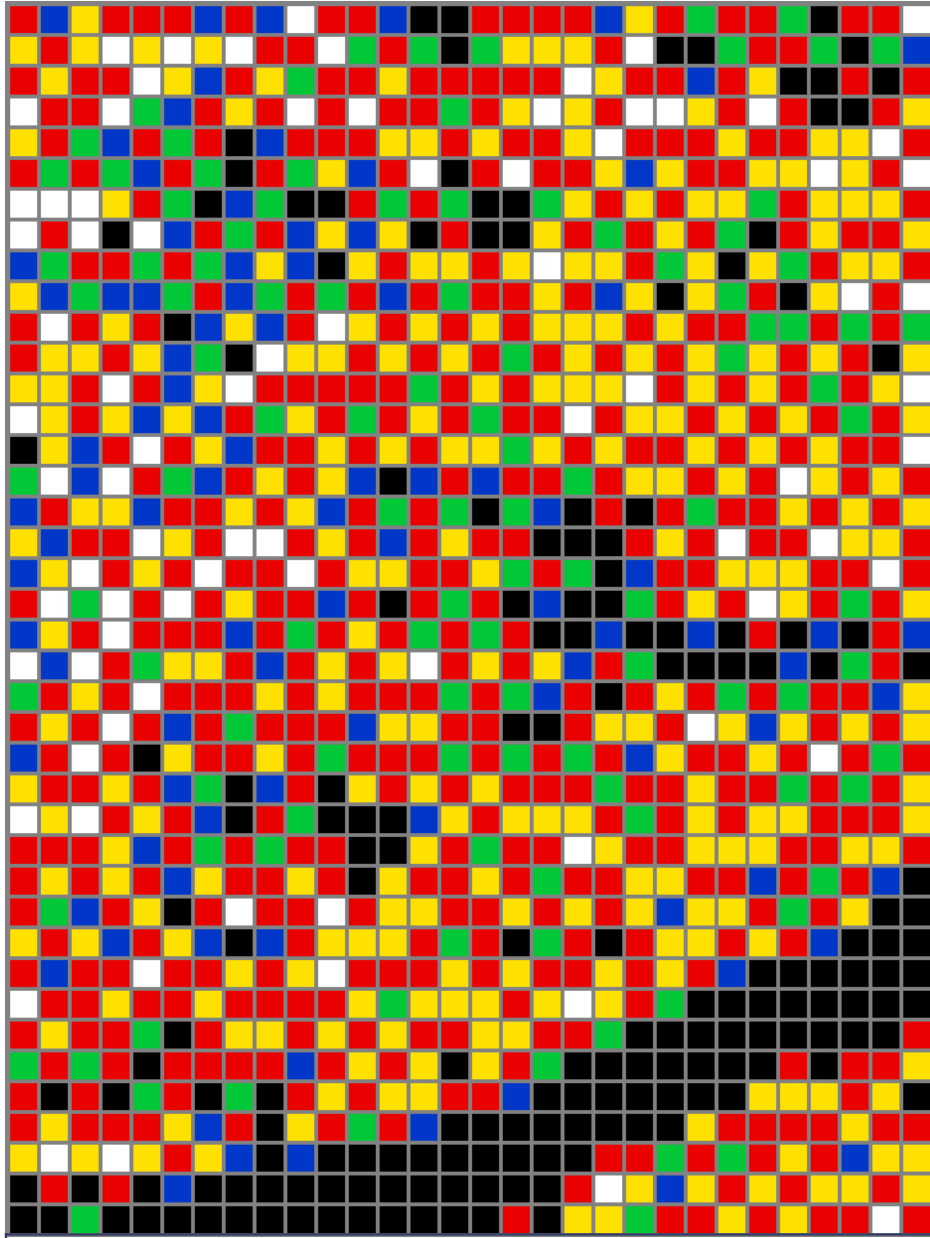
Pixel Art



38



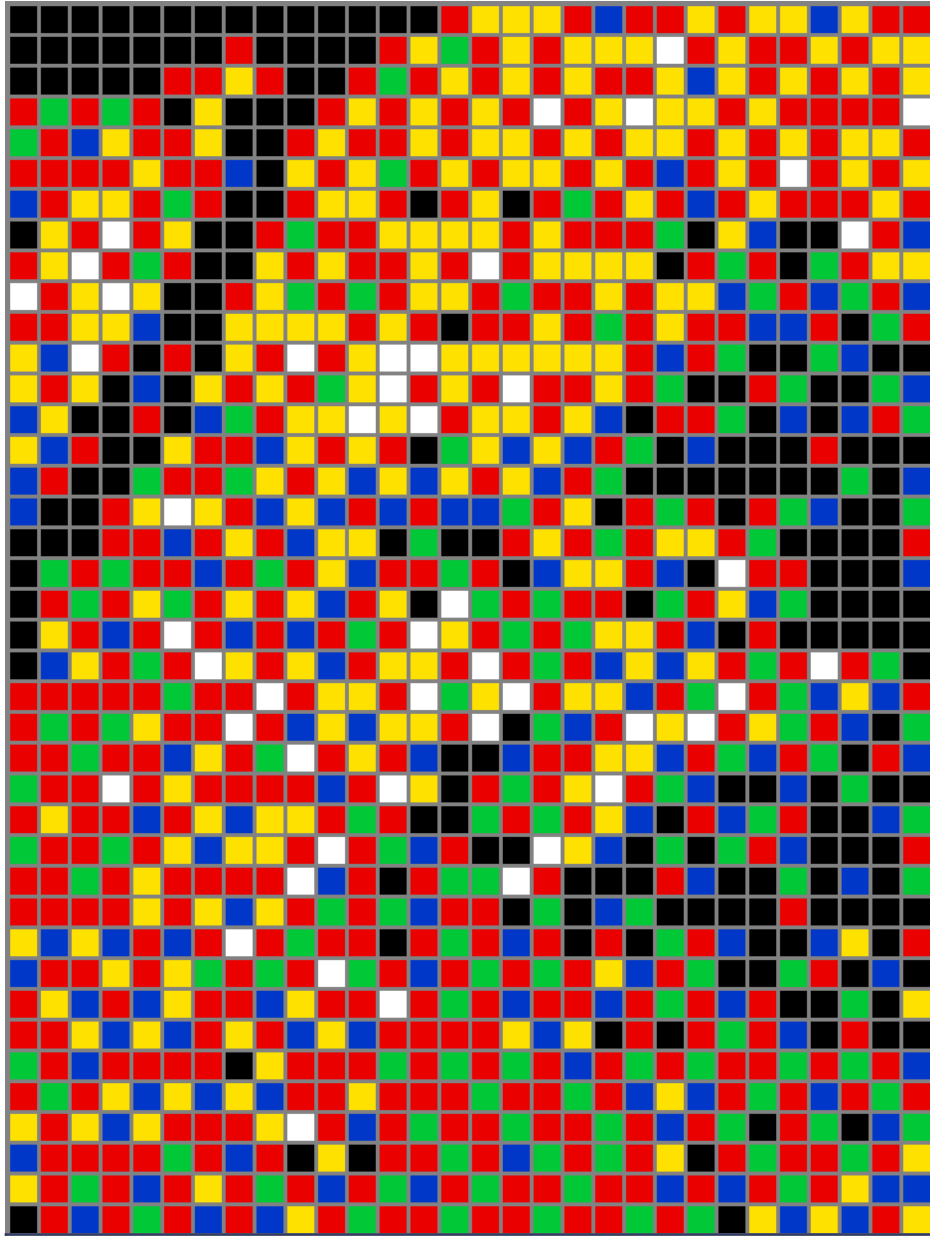
Pixel Art







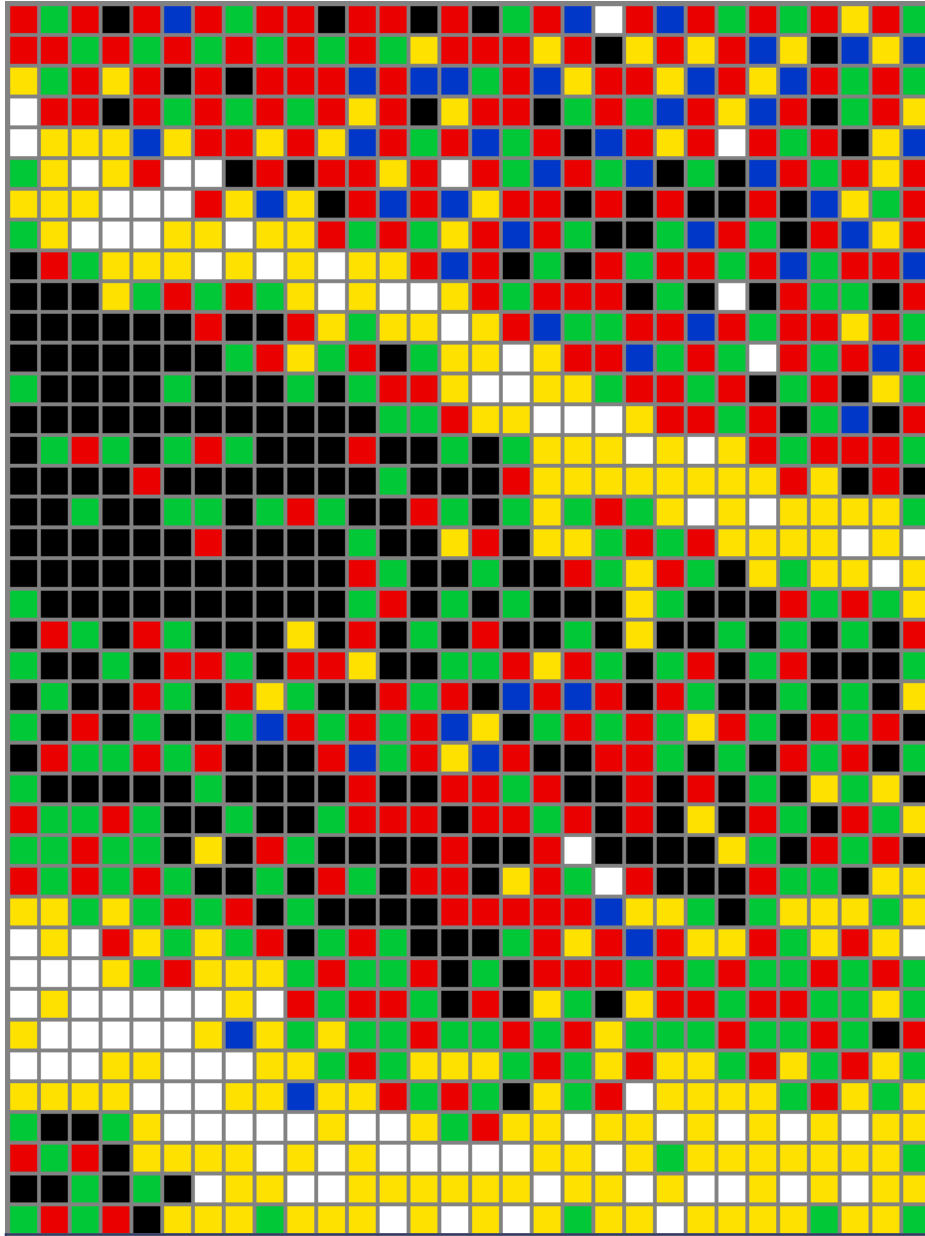
Pixel Art



40



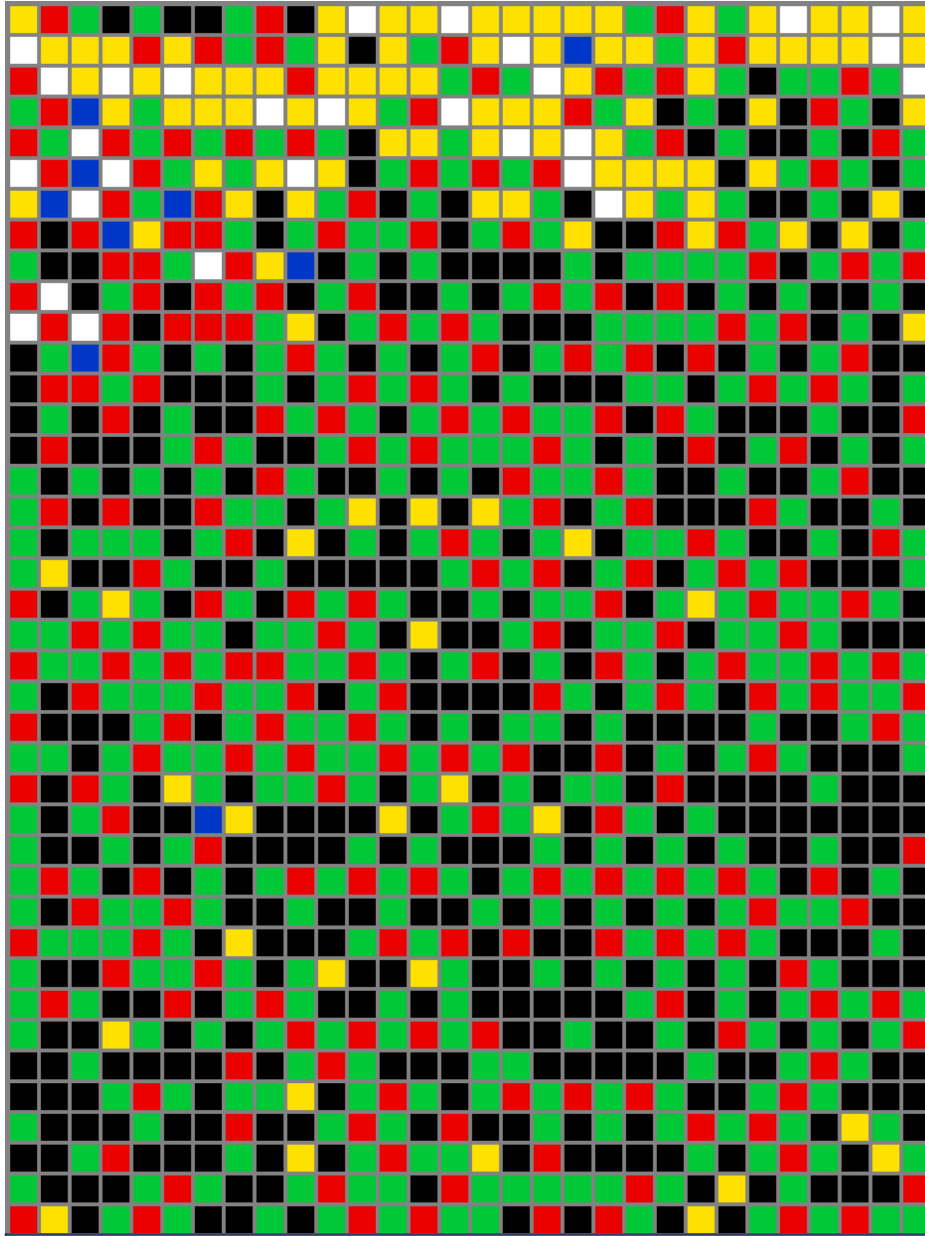
Pixel Art



41



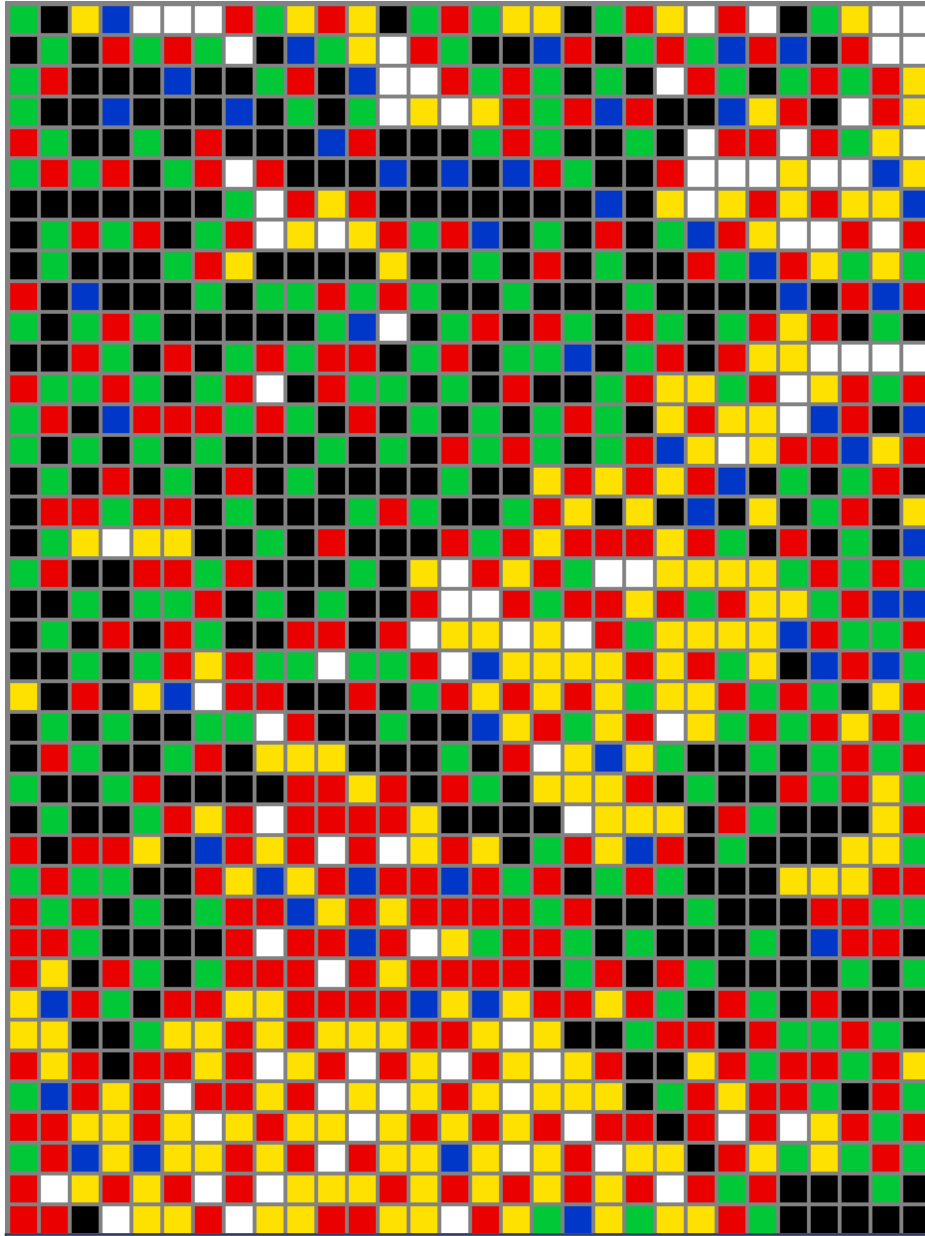
Pixel Art



42



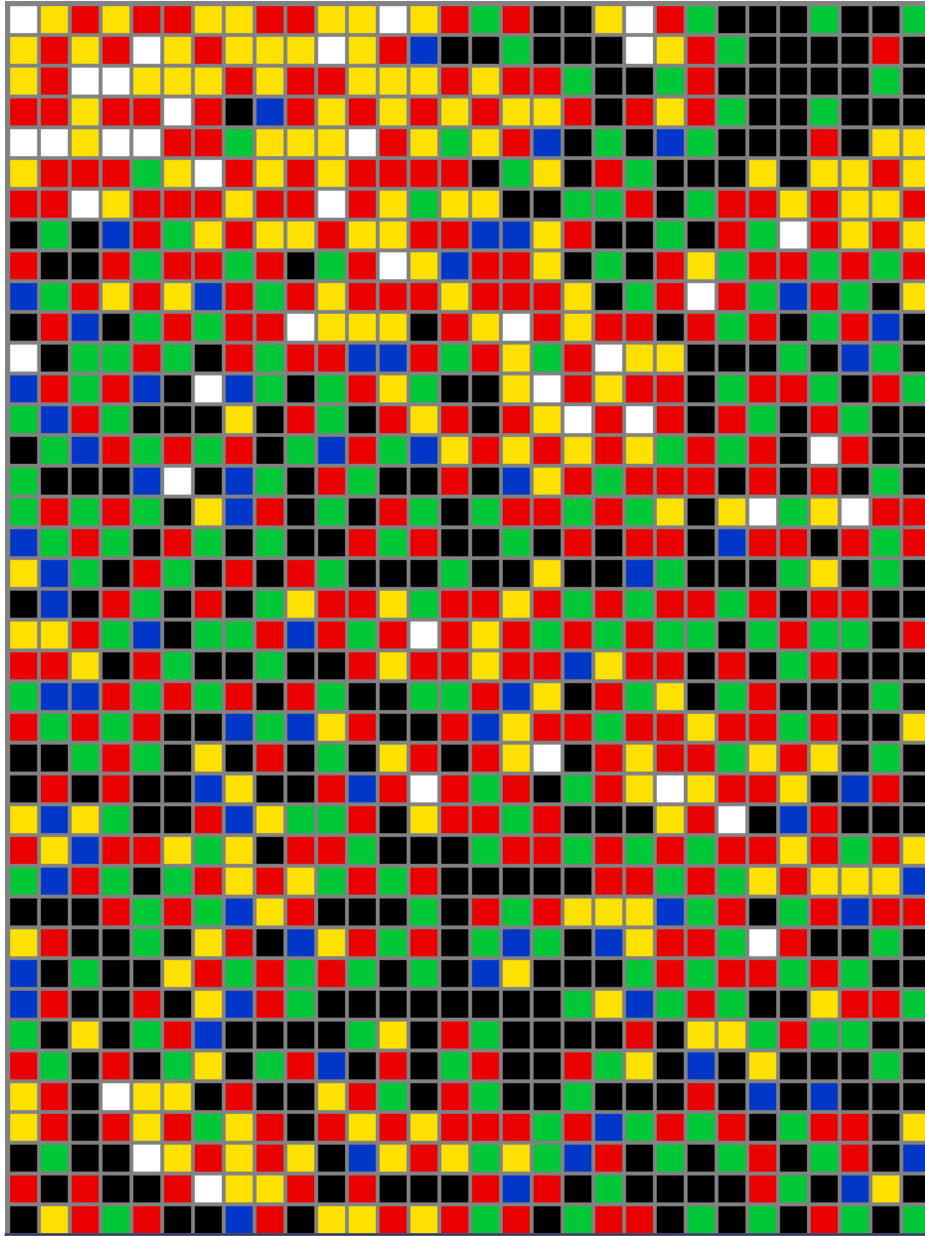
Pixel Art



43



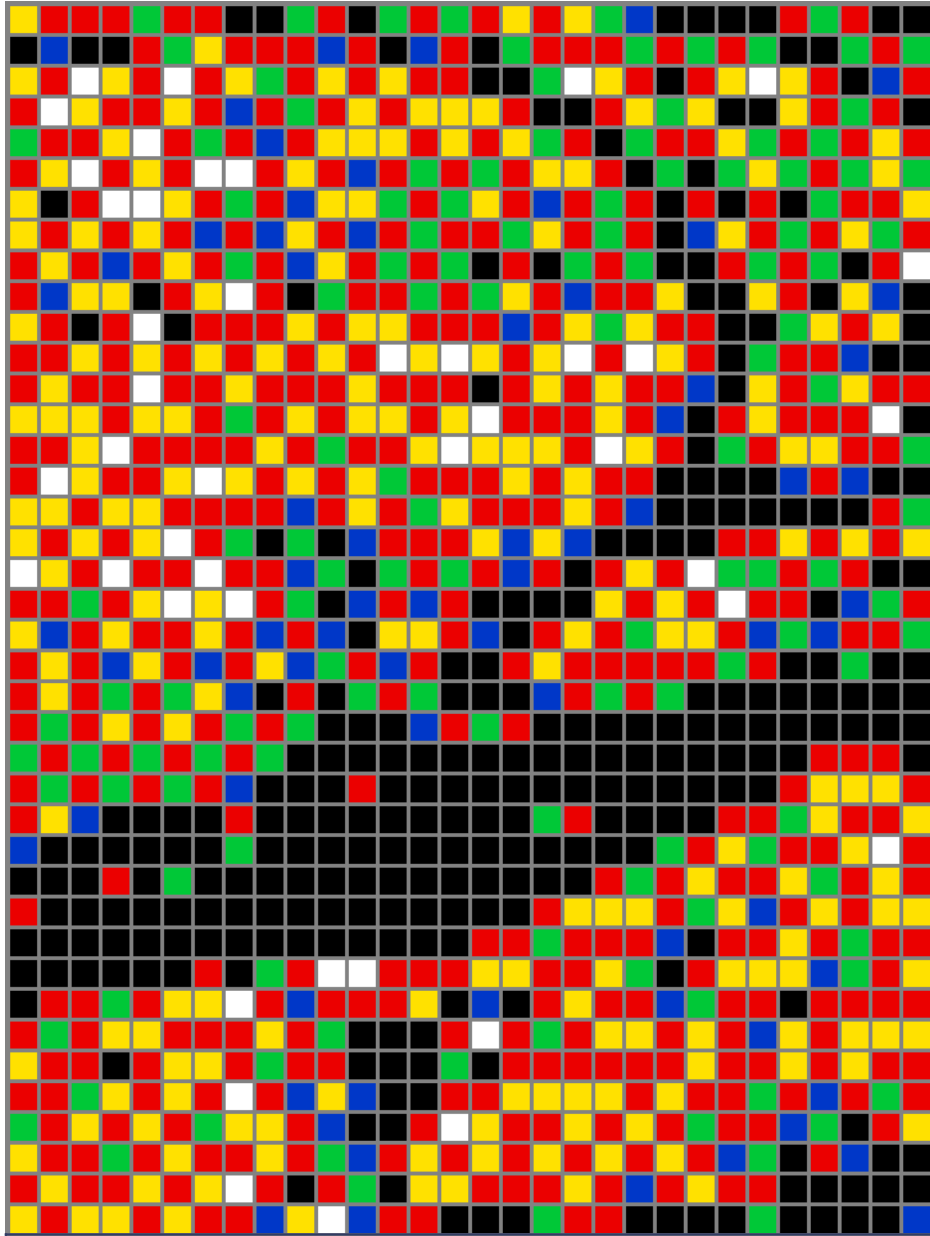
Pixel Art



44



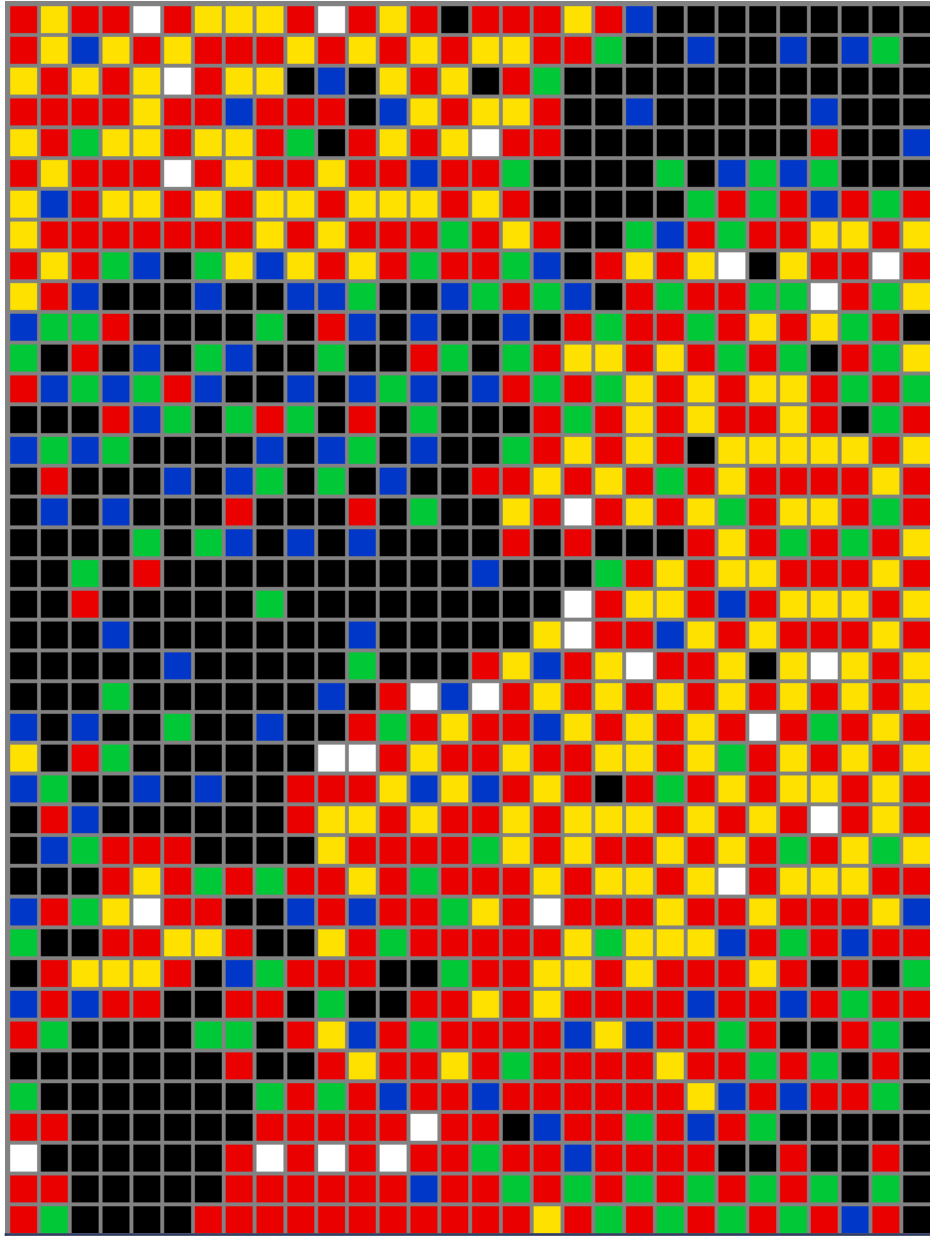
Pixel Art



45



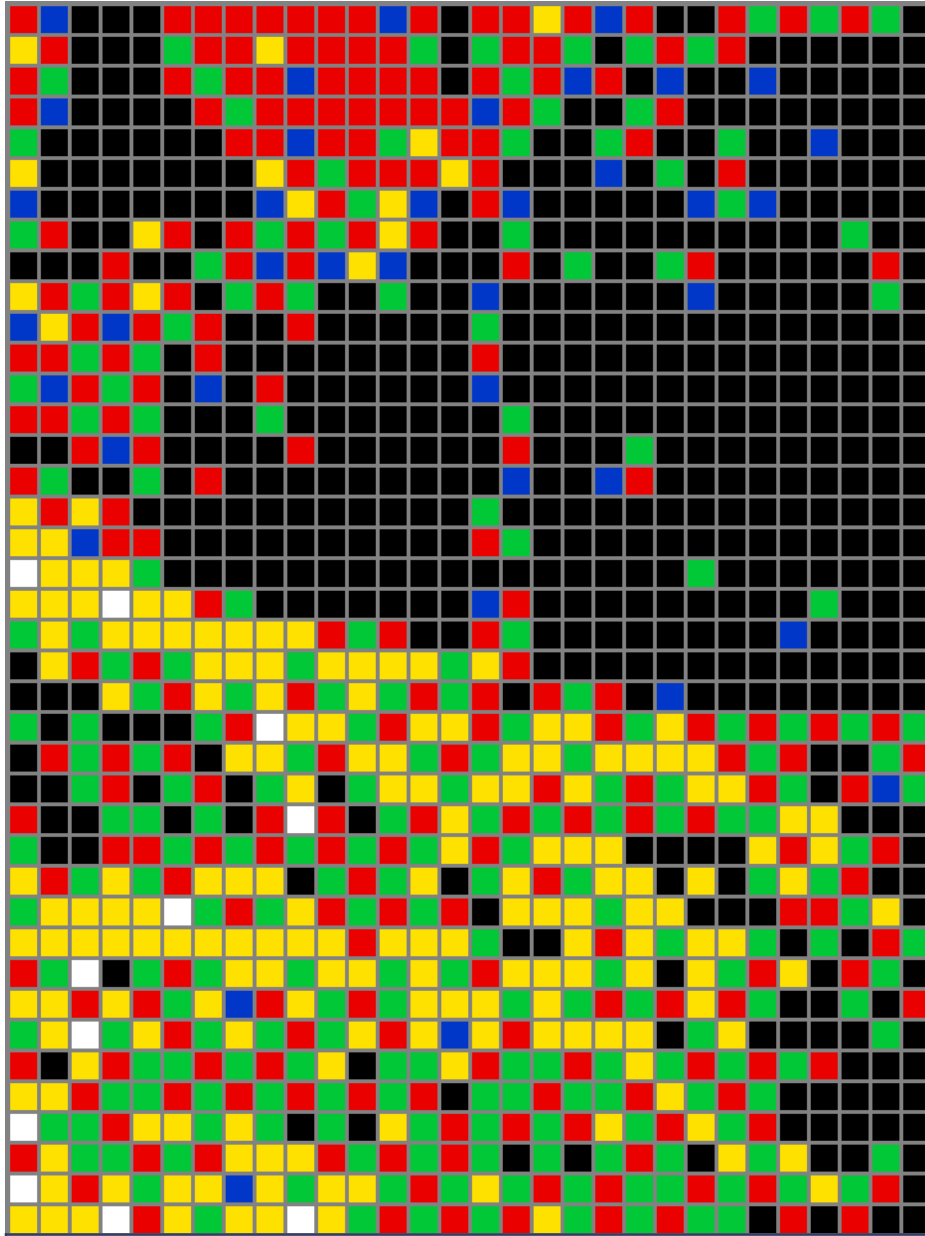
Pixel Art



46



Pixel Art

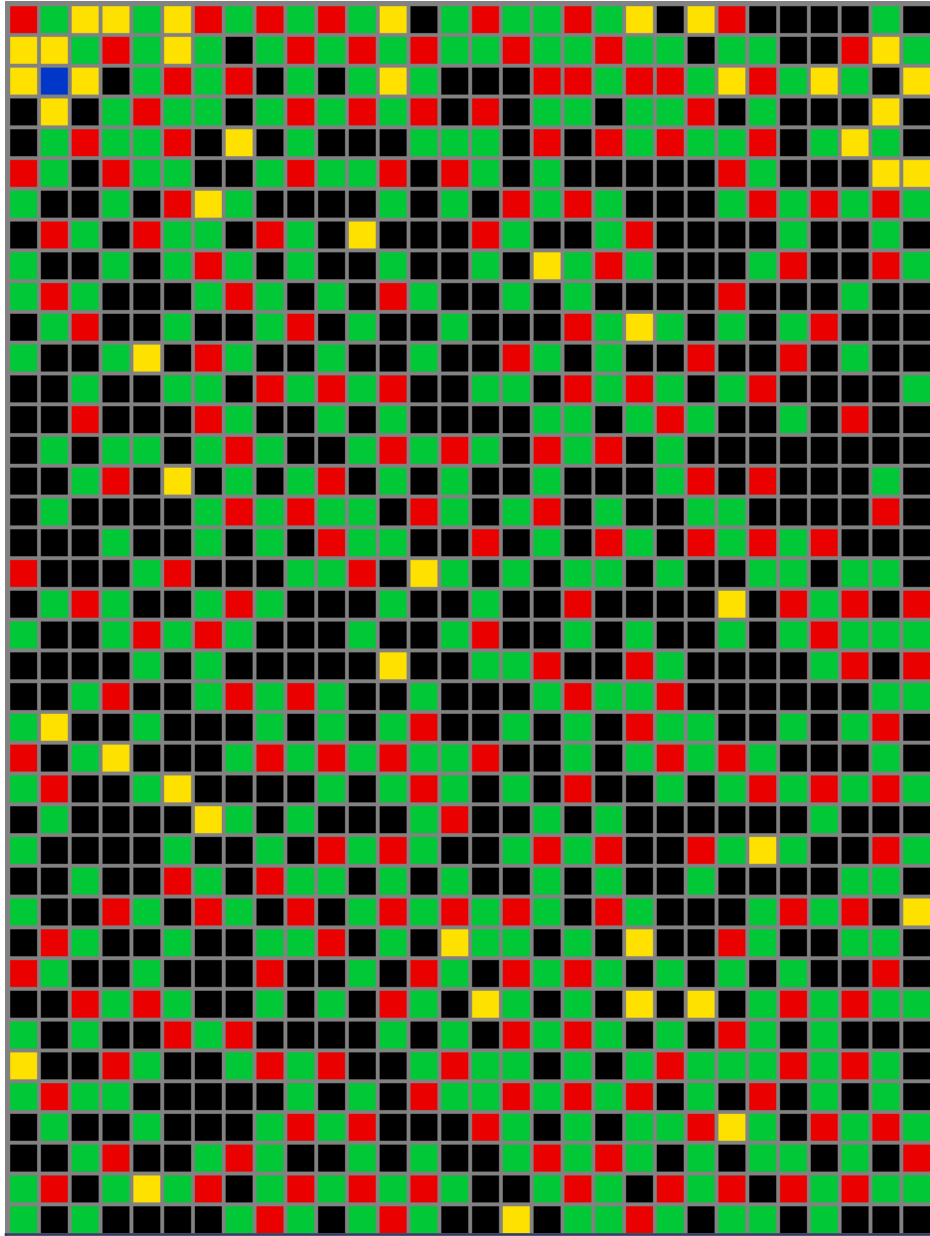


47





Pixel Art



48