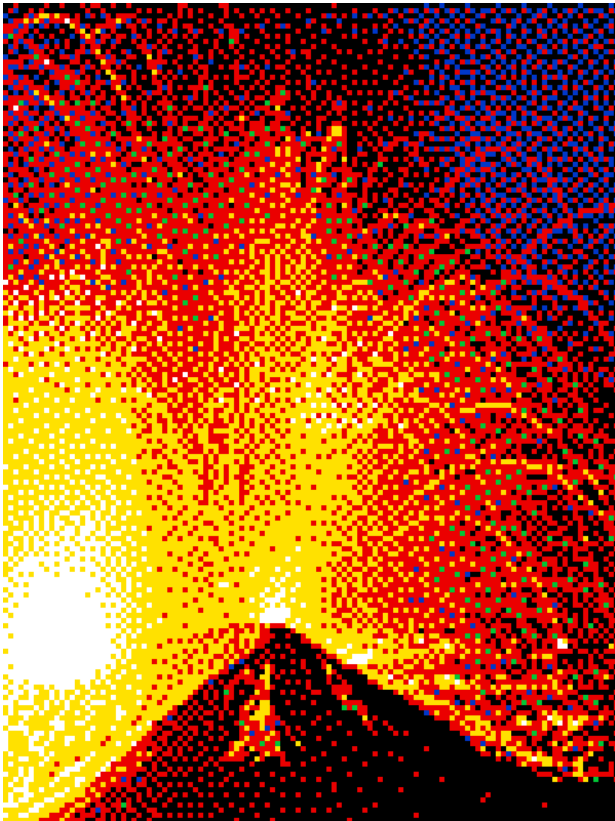





## Pixel Art



1	5	9	13
2	6	10	14
3	7	11	15
4	8	12	16

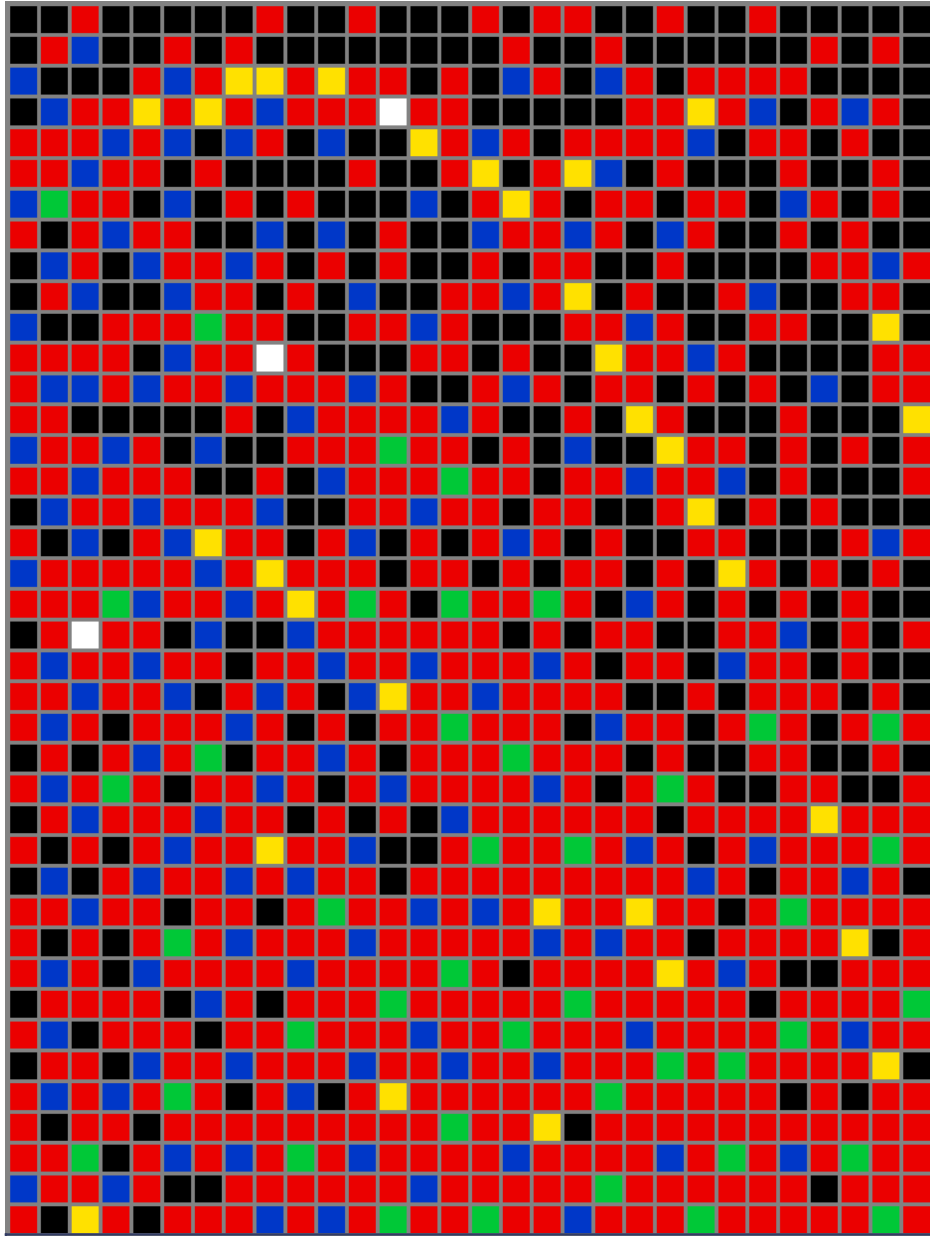
Colore	Chiodini compresi nella confezione	Chiodini necessari	Chiodini aggiuntivi che ti servono
 ROSSO	5000	7328	2328 (3 scatole ricambi PixelArt 1000 )
 NERO	5400	4863	-
 GIALLO	3000	4577	1577 (2 scatole ricambi PixelArt 1000 )
 BIANCO	5400	1138	-
 BLU	4000	1028	-
 VERDE	2400	266	-

Stampa le schede-guida su carta comune in "dimensioni reali" cioè esattamente le stesse della tavoletta traforata; fai molta attenzione a non attivare, sulla tua stampante, il comando "Adatta al foglio" che ne varierebbe le dimensioni rendendole inutilizzabili. Ti consigliamo di stampare una pagina di prova con la scheda 1, controllarla con la tavoletta e poi stampare tutte le altre schede. Ritaglia le schede tenendo insieme il numero, ti servirà nel montaggio delle tavolette.

Questo PDF con le relative schede rappresenta soltanto un esempio di quello che si può ottenere con la tecnica Pixel Art applicata ai chiodini Quercetti. Pertanto questo PDF è scaricabile gratuitamente e non può essere oggetto di vendita.



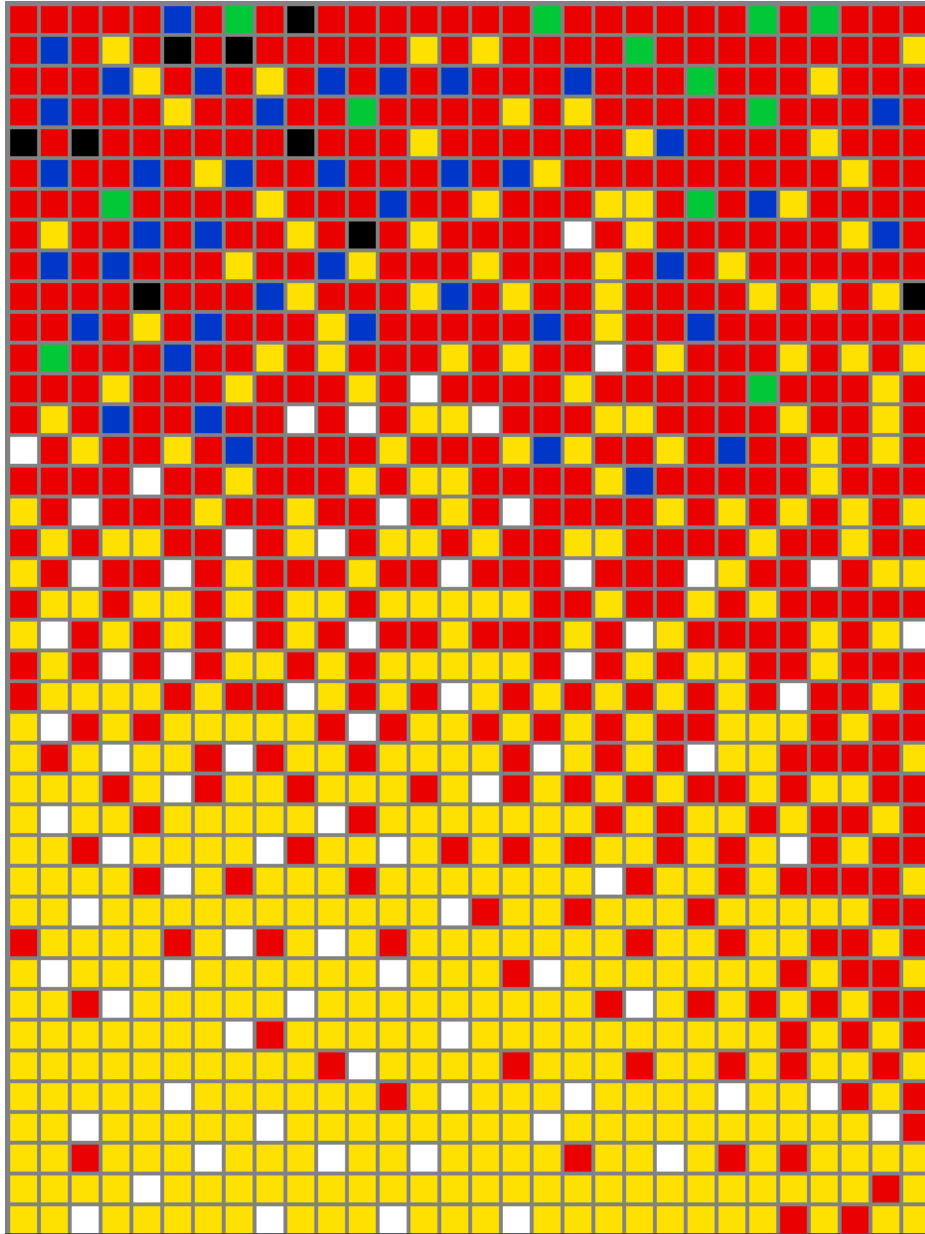
Pixel Art



1



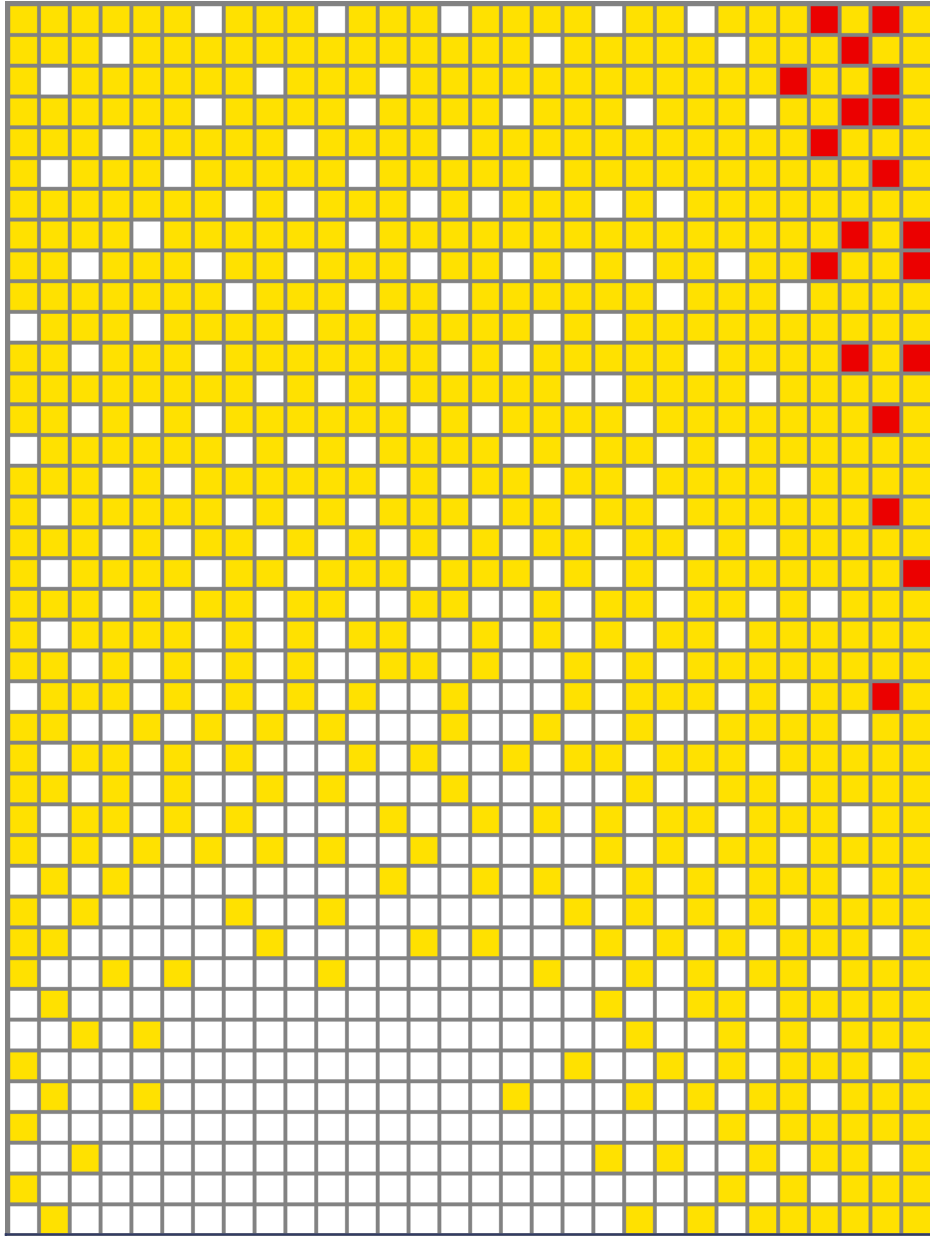
Pixel Art



2



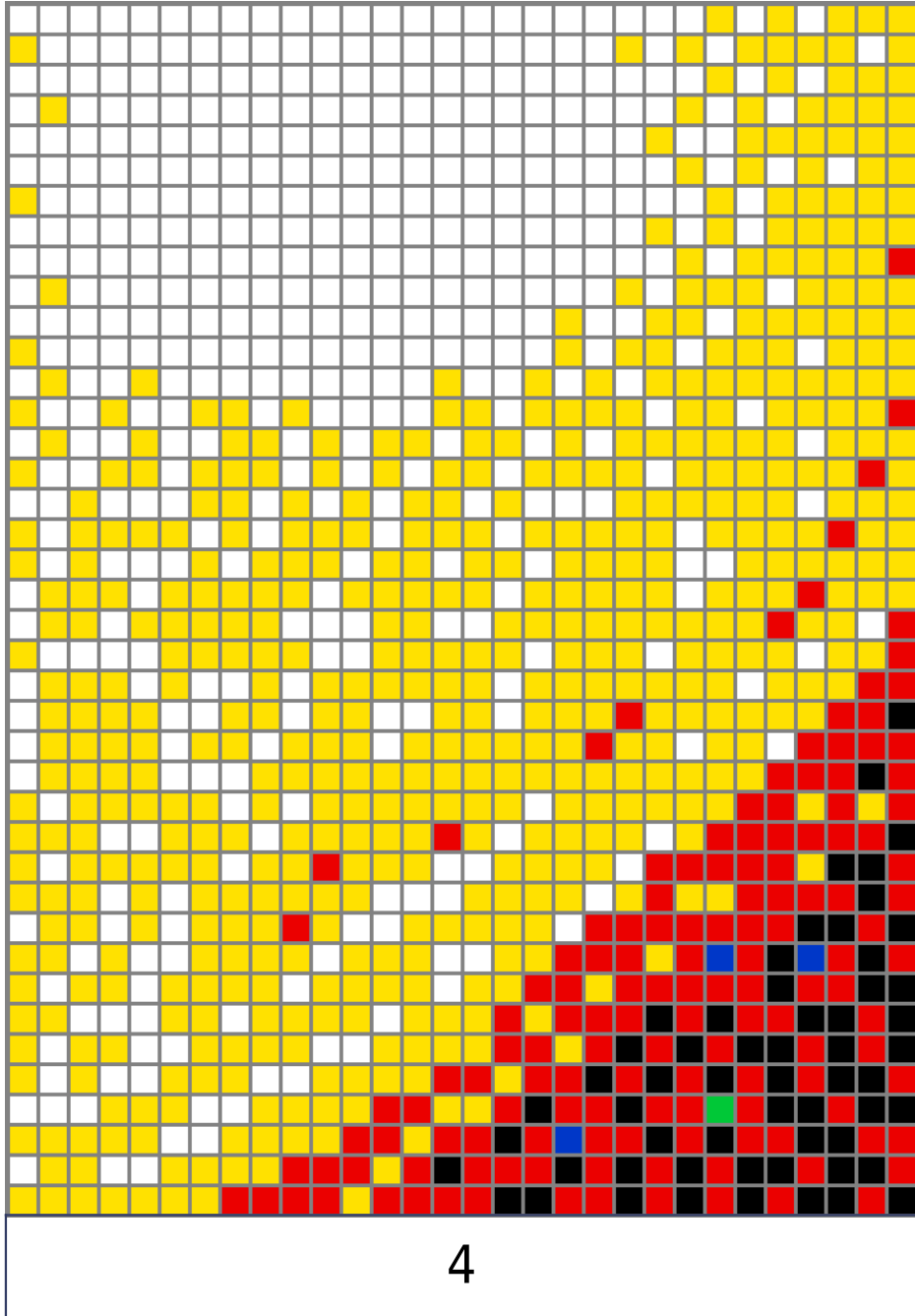
Pixel Art



3

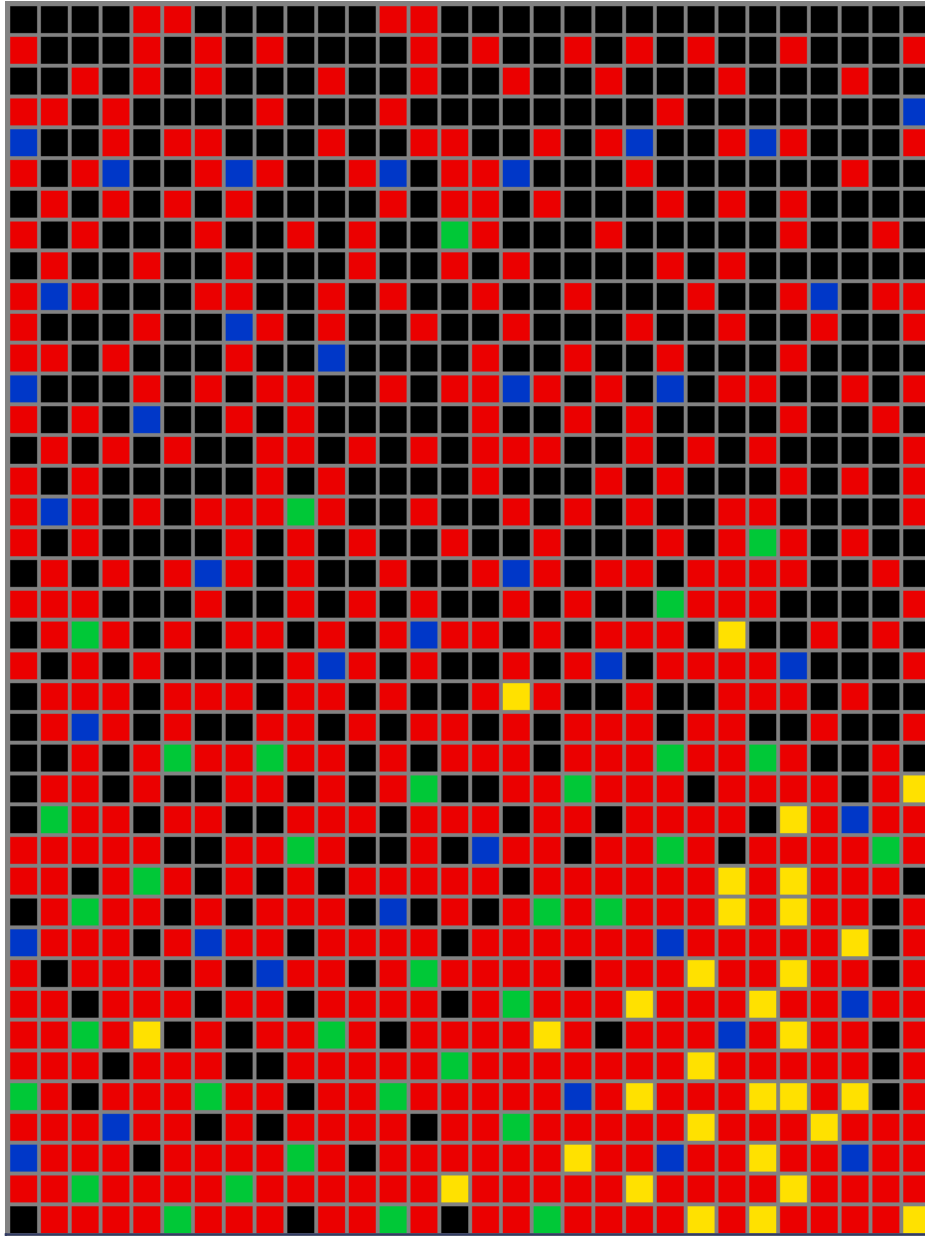


Pixel Art





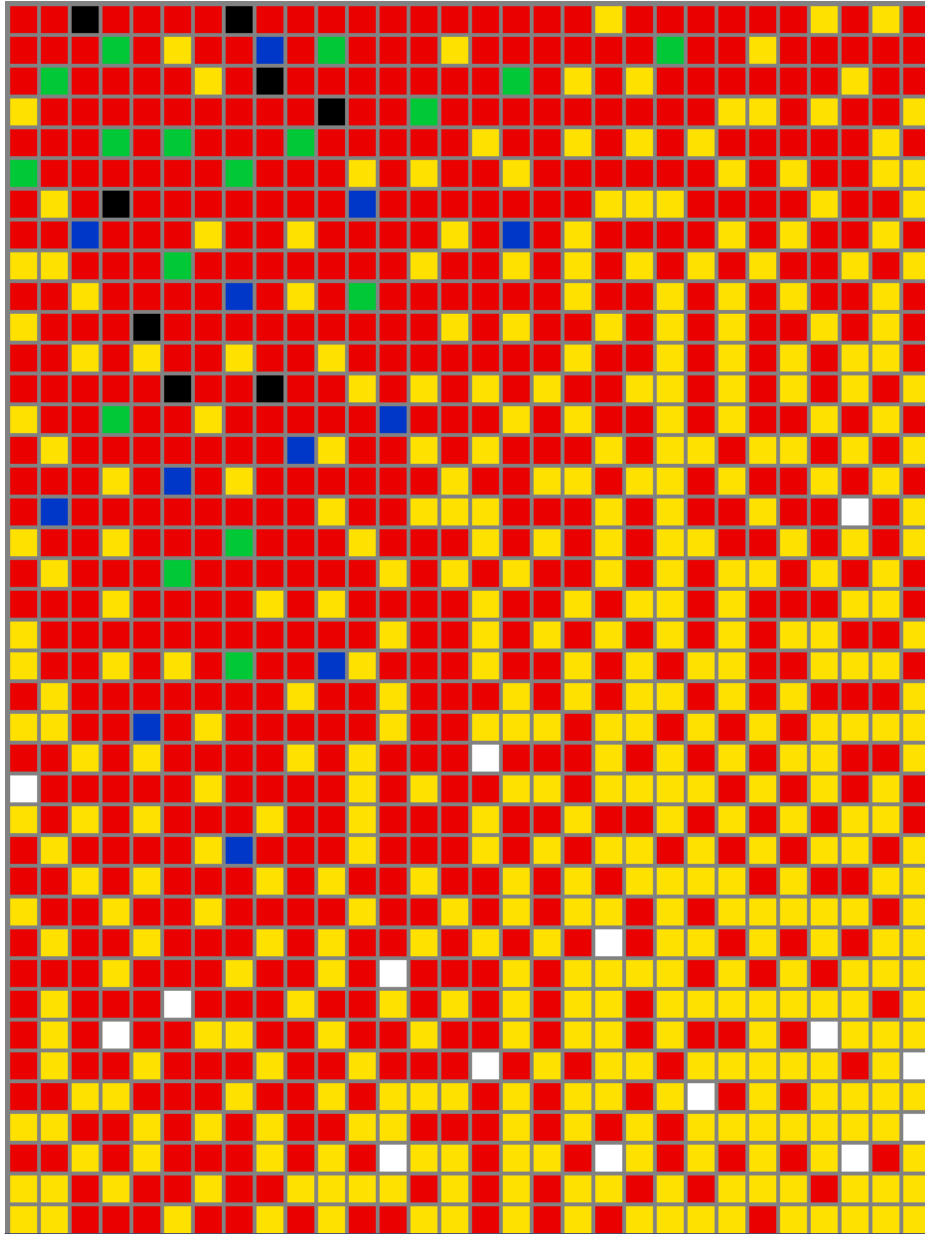
Pixel Art



5



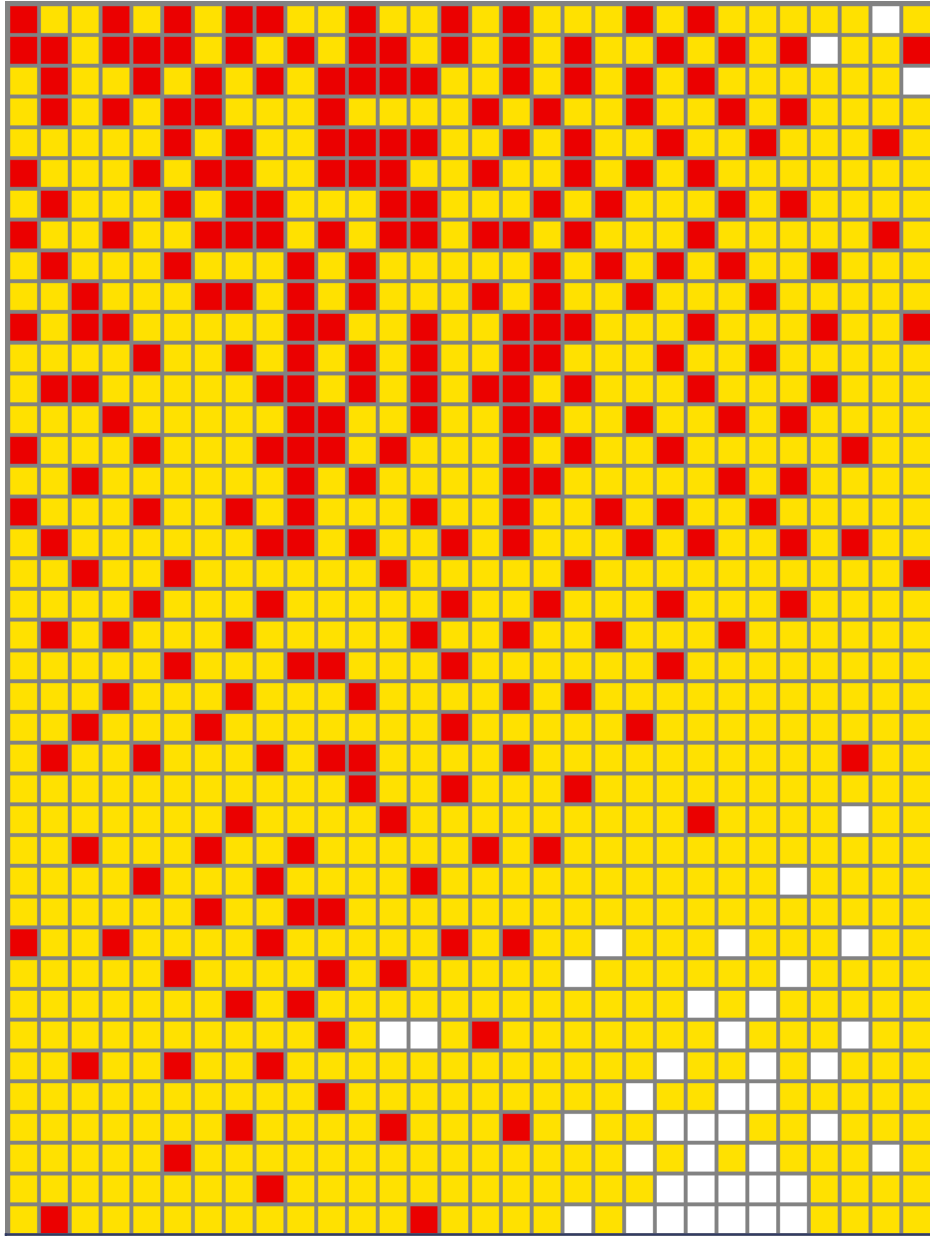
Pixel Art



6



Pixel Art

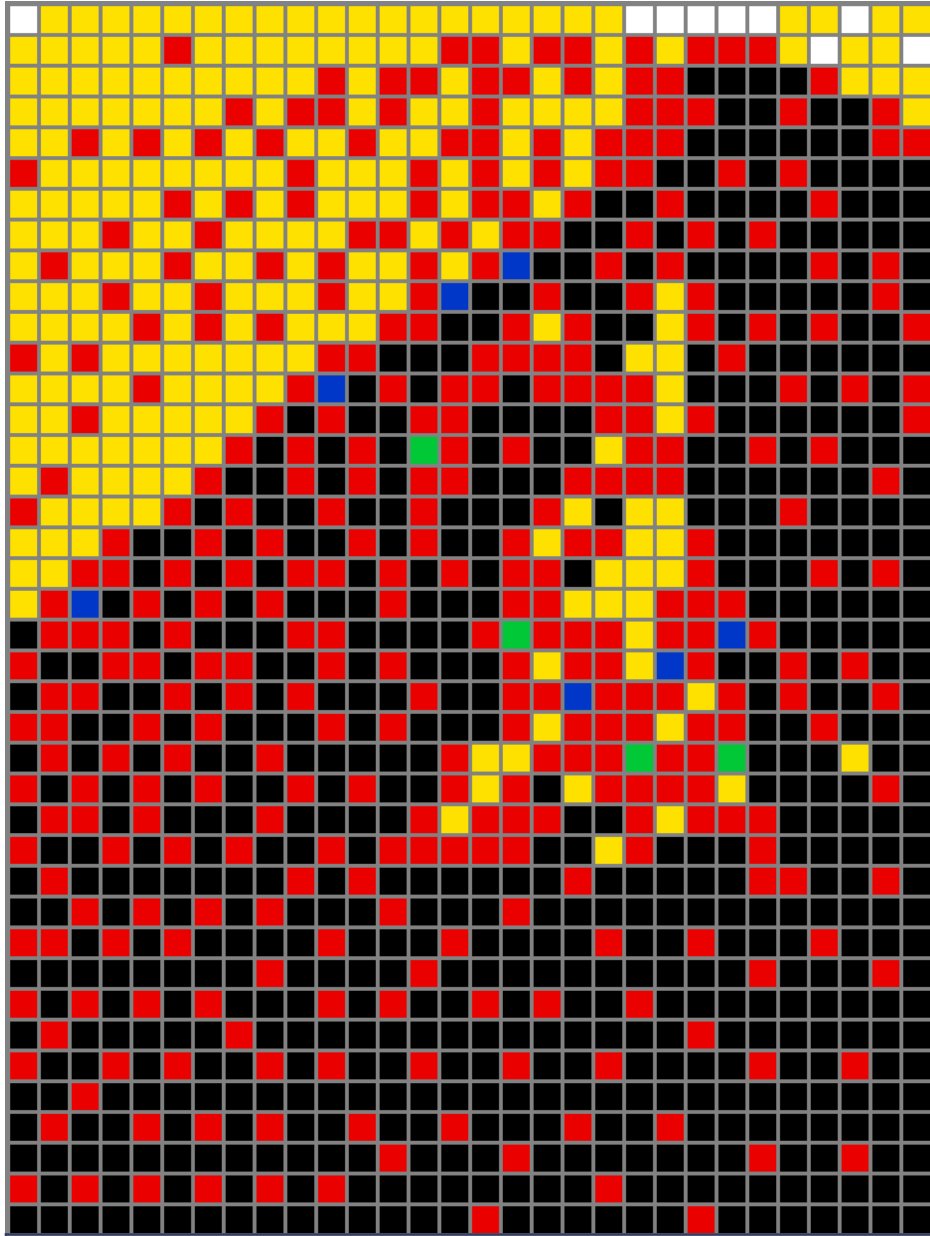


7





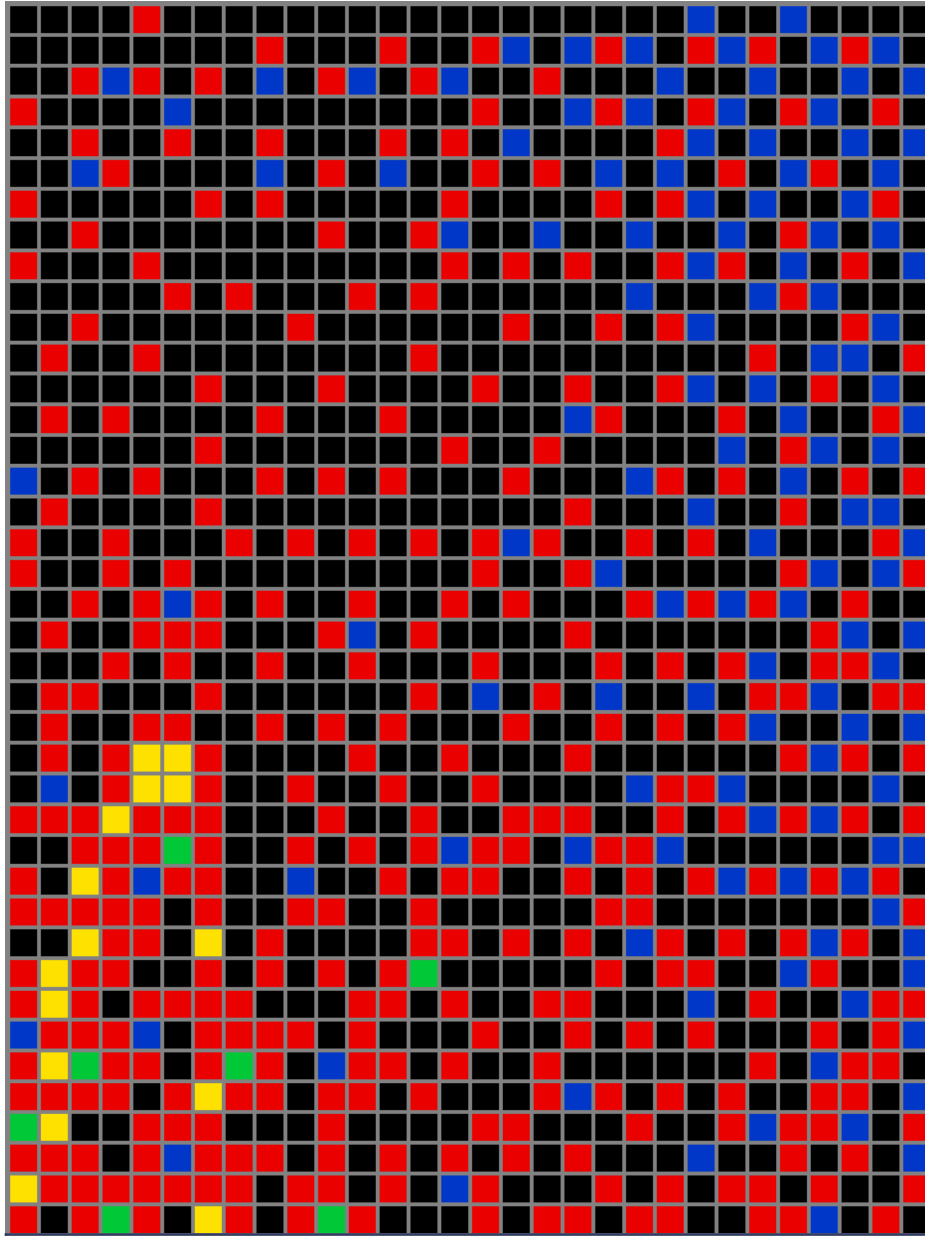
Pixel Art



8



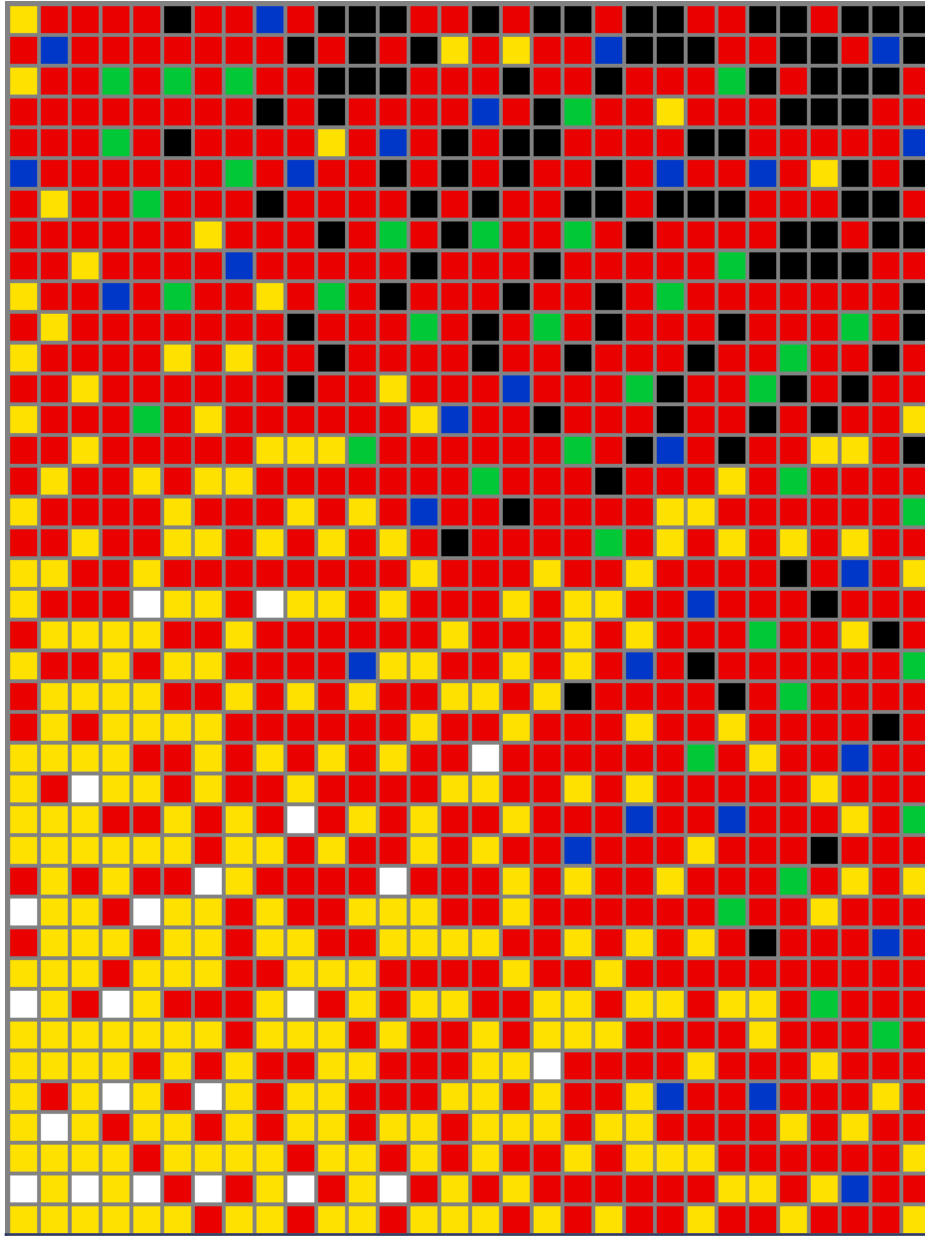
Pixel Art



9



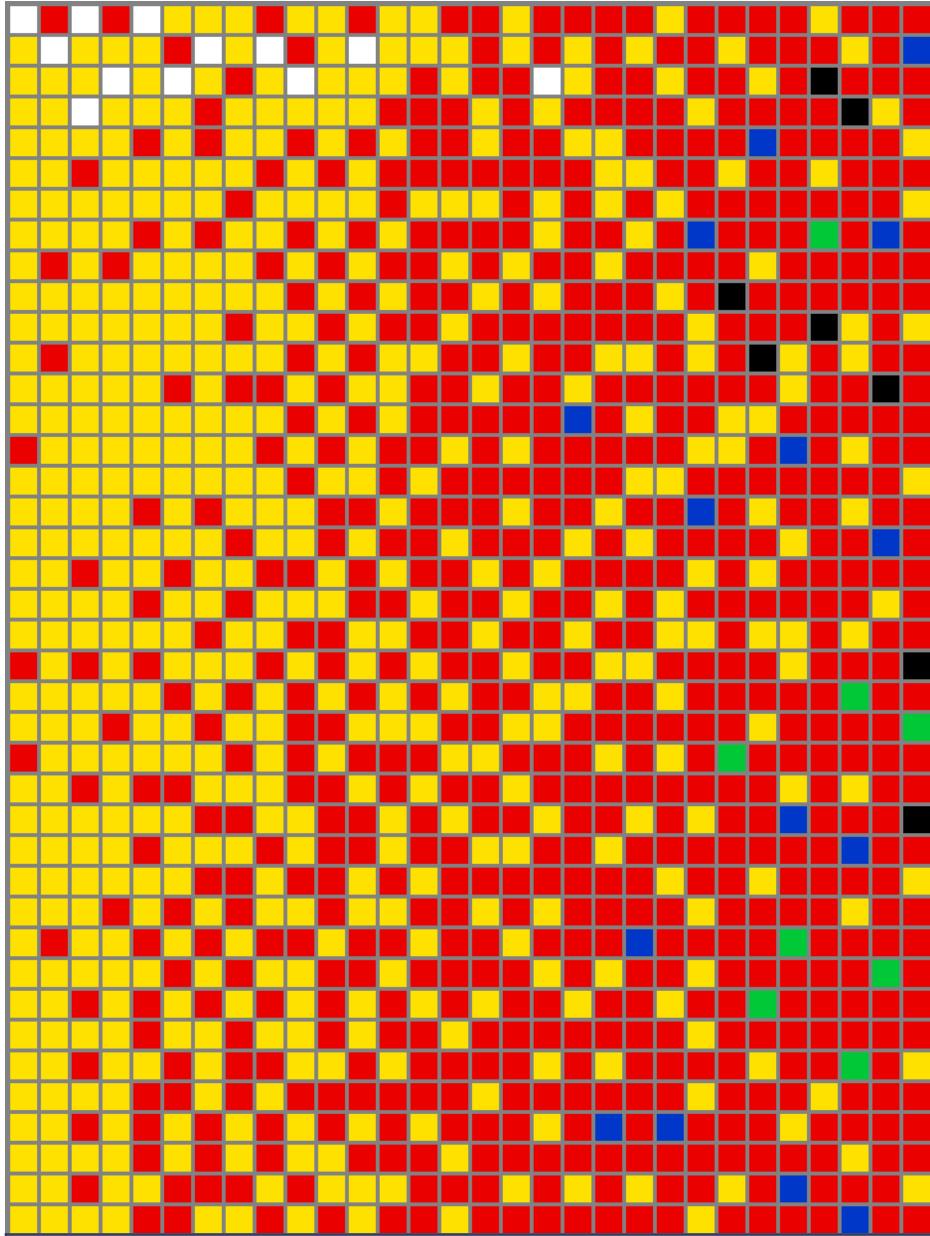
Pixel Art



10

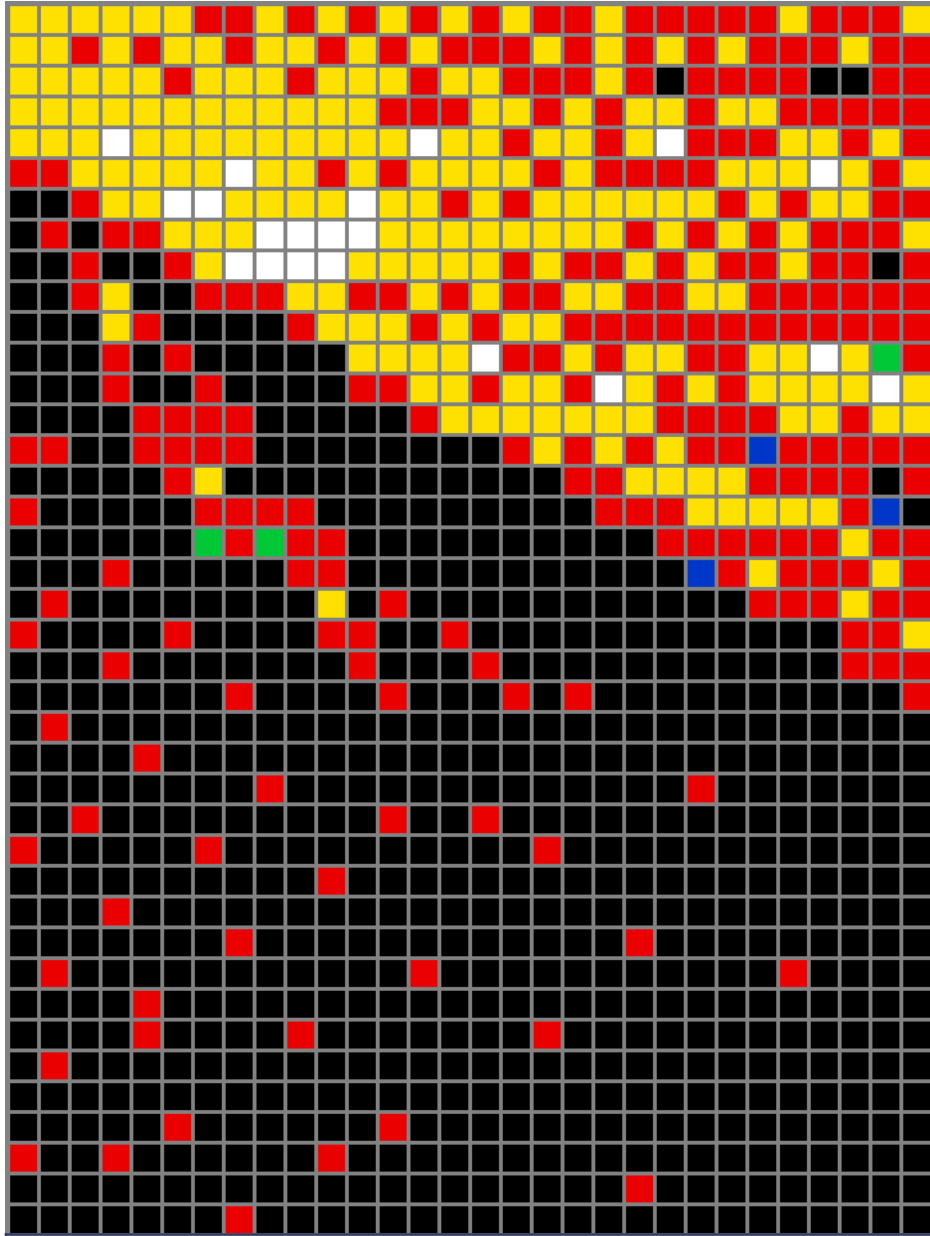


Pixel Art





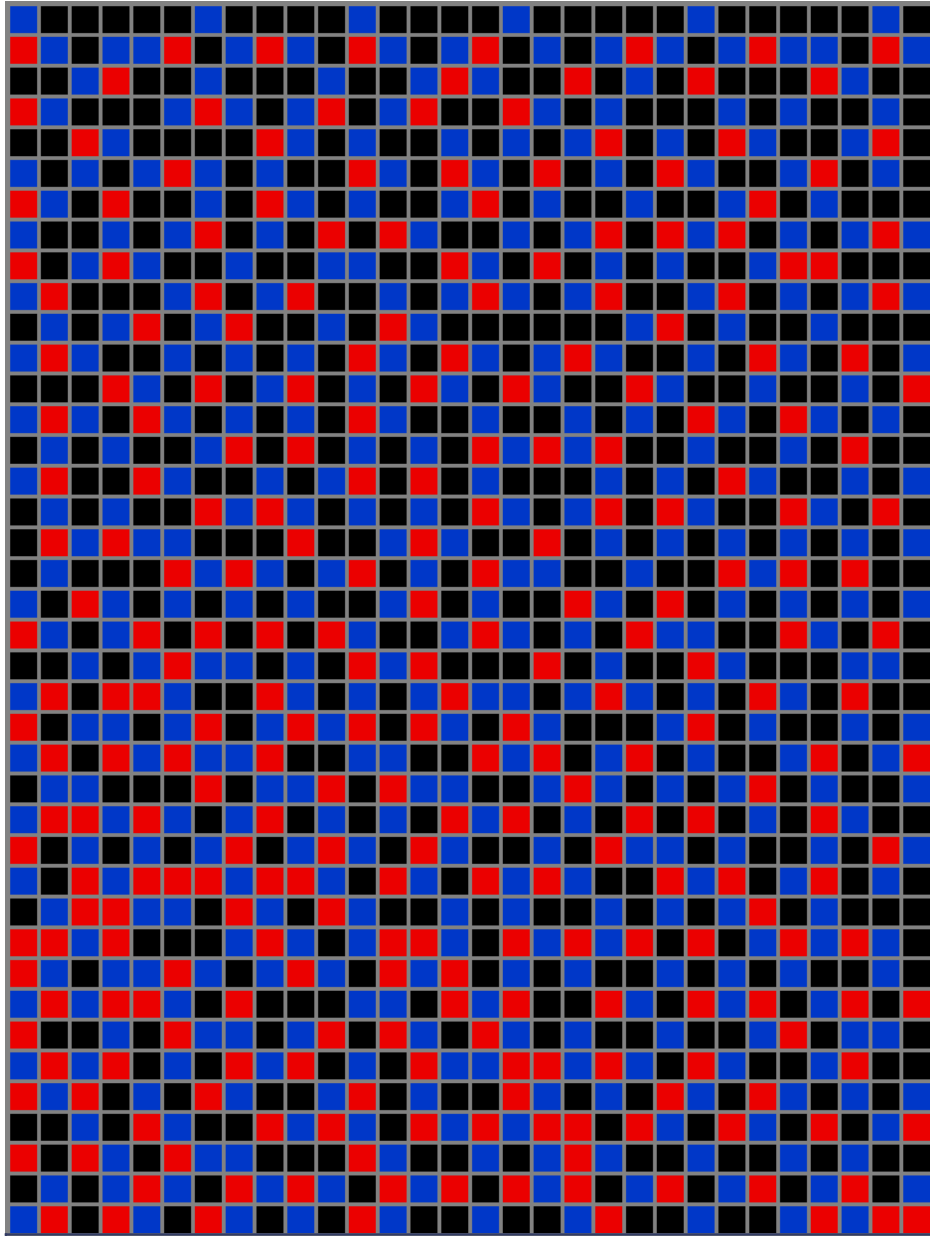
Pixel Art



12



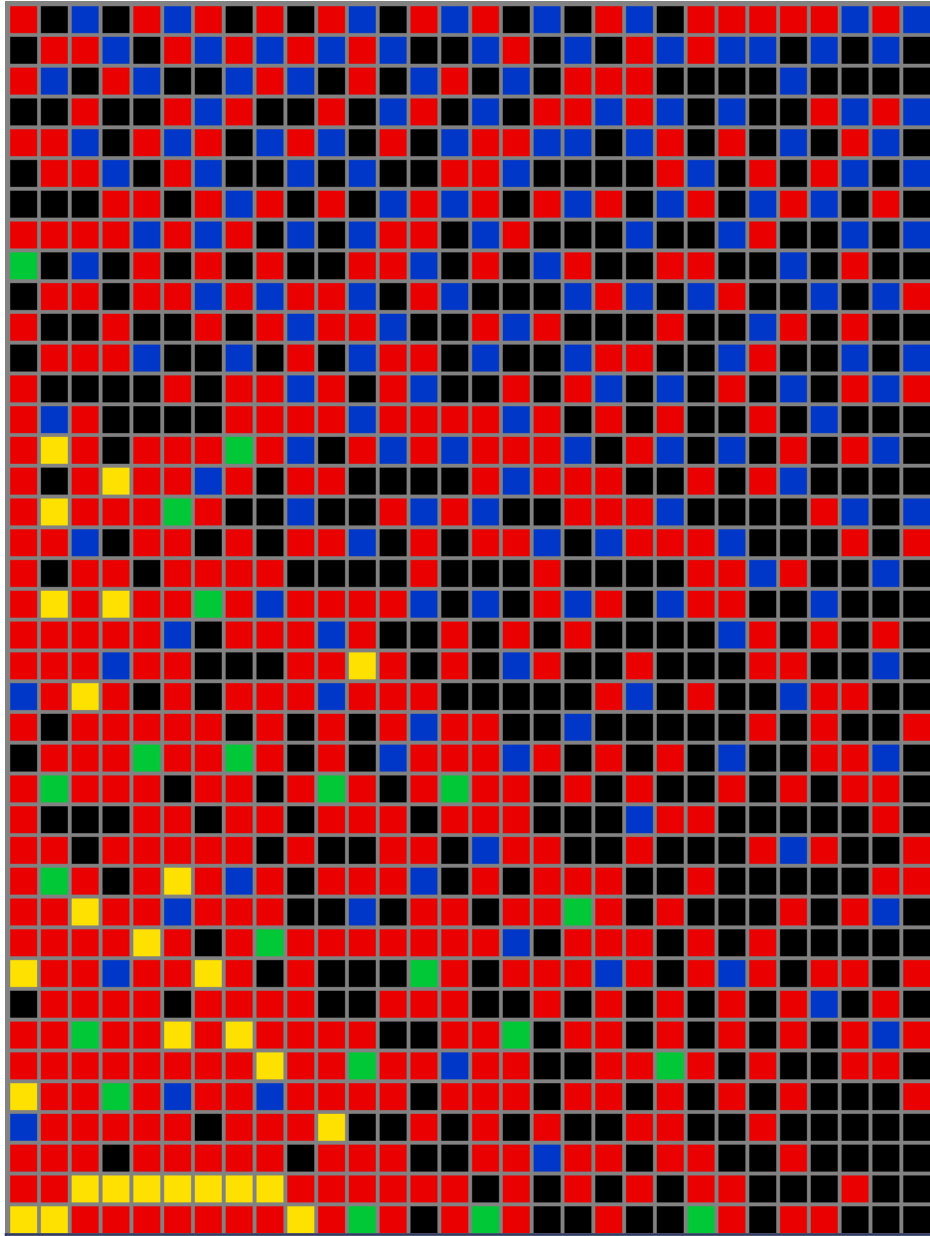
Pixel Art



13



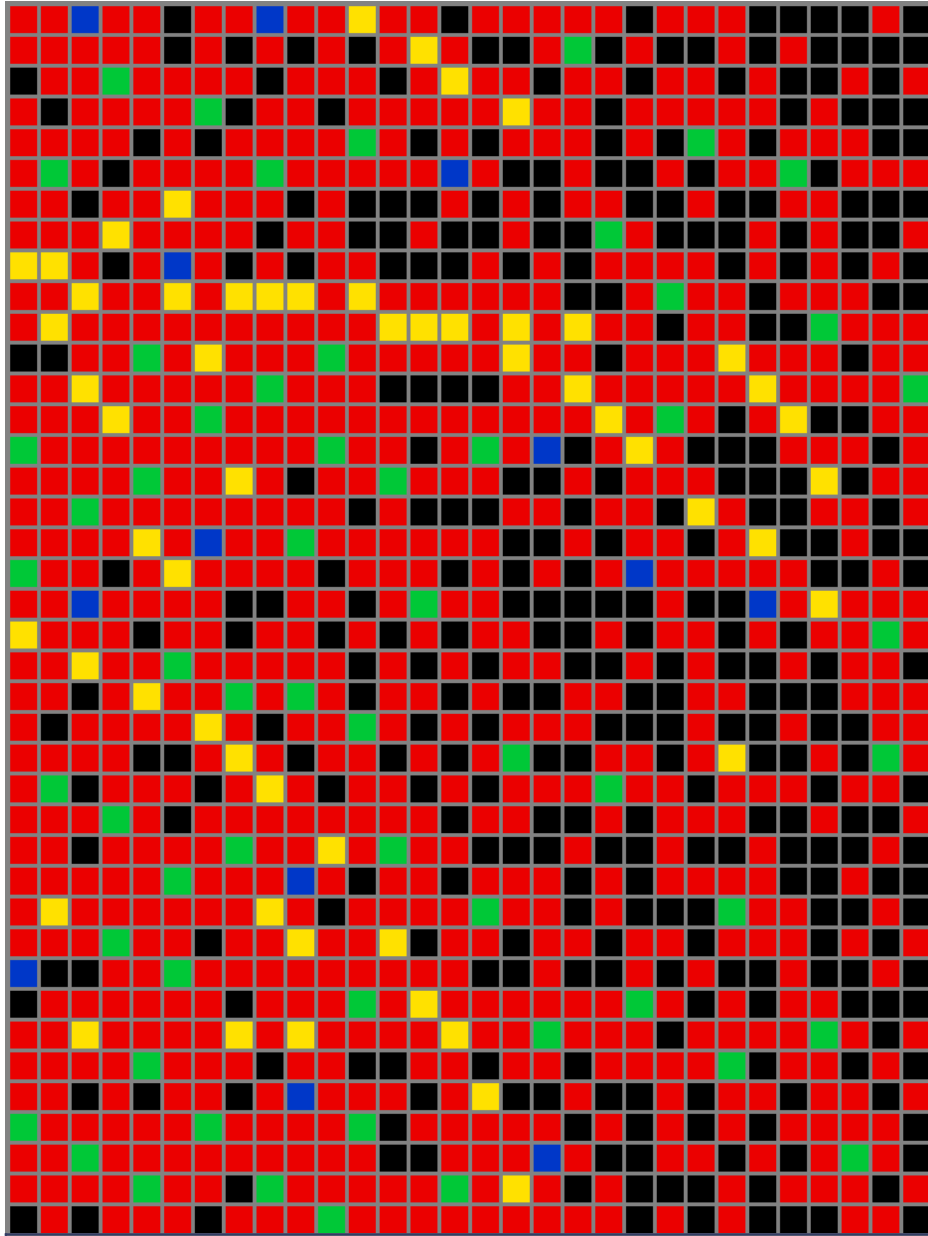
Pixel Art



14



Pixel Art

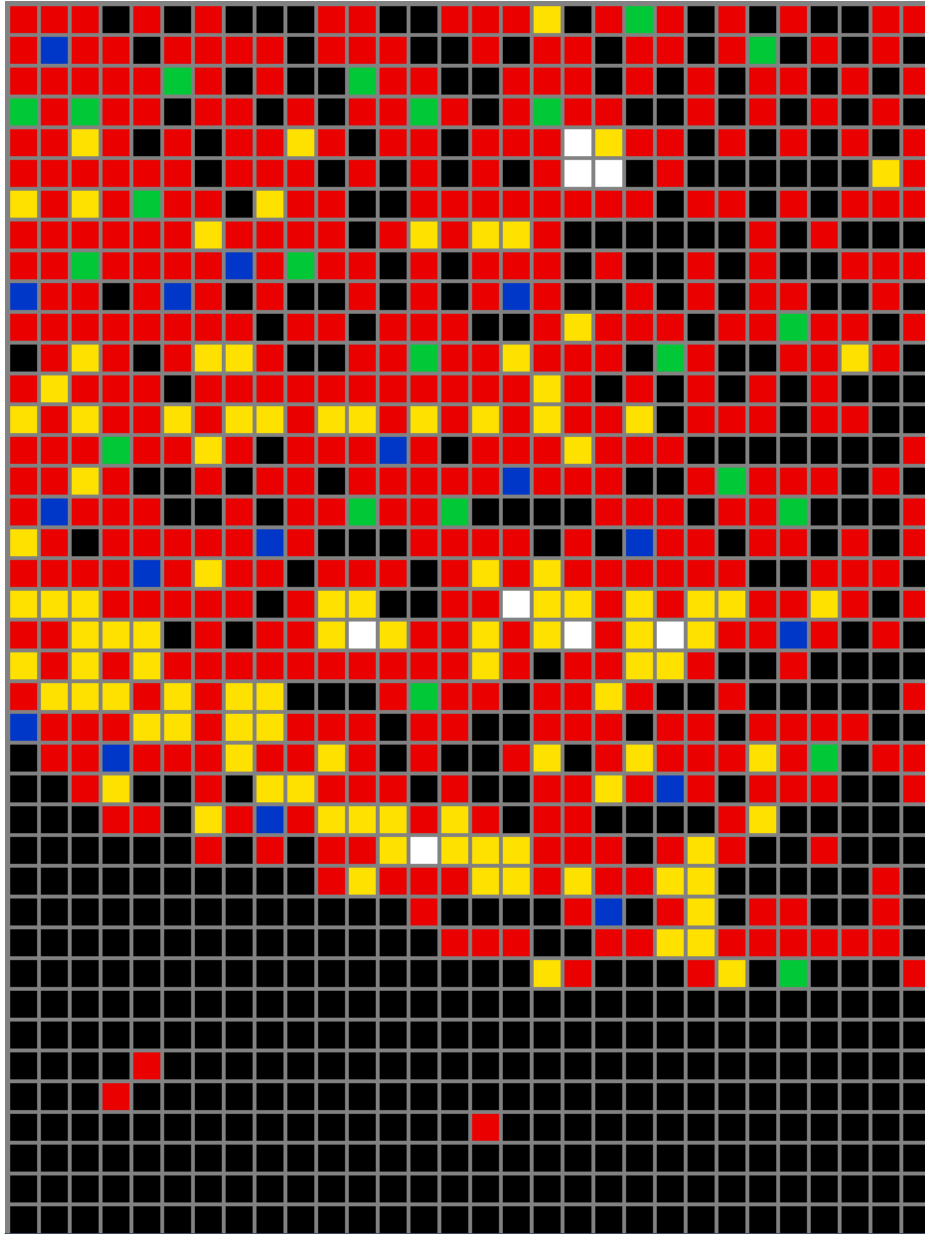


15





Pixel Art



16